



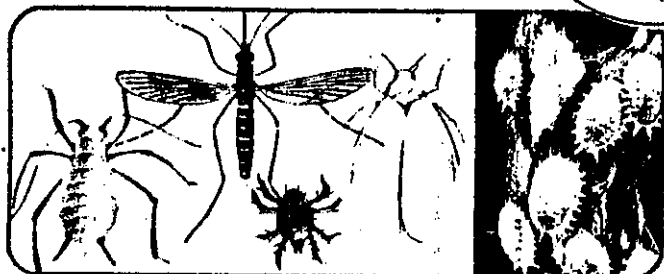
# ORTHO

Makes Up To  
95 Gallons  
Diluted Spray

## Malathion 50 PLUS<sup>TM</sup> Insect Spray

Kills Insects—Aphids, Flies, Mealybugs,  
Mosquitoes, Red Spider Mite and Scales

SUPERIOR  
FORMULA PLUS  
ORTHEX<sup>TM</sup>  
WETTING AGENT



Active Ingredients	By Wt.
Malathion	50%
Xylene—Range Aromatic Solvent	33%
Inert Ingredients	17%
*O,O-dimethyl dithiophosphate of diethyl mercaptosuccinate.	

Keep out of reach of children

### WARNING

See side panel for additional  
precautionary statements.

NET CONTENTS 1 QT.

#### PRECAUTIONARY STATEMENTS HAZARDS TO HUMANS & DOMESTIC ANIMALS

**WARNING:** Causes substantial but temporary injury. Harmful if swallowed. Do not get in eyes. Avoid contact with skin or clothing. Avoid breathing vapors or spray mist. **STATEMENT OF PRACTICAL TREATMENT:** In case of eye contact, wash eyes immediately with fresh water for 15 minutes. See a doctor. If swallowed, give water or milk to drink and seek medical advice. Consult medical personnel before inducing vomiting. Medical advice cannot be obtained, then take person to nearest hospital or to the nearest medical emergency treatment center or hospital. Wash skin with plenty of soap and water. If inhaled, remove person to fresh air. Note to Physicians: Emergency Information—(15) 233-3333. This product contains a light petroleum solvent and may produce irritation. Malathion is a weak cholinesterase inhibitor. If symptoms of cholinesterase inhibition develop, atropine sulfate is given. 2 mg. (PROTOPAM) may also be given in conjunction with atropine. Do not be used alone. Keep children and animals away from treated areas. These areas are dry. Food utensils such as teaspoons and tablespoons should be used for food purposes after use with pesticides.

**ENVIRONMENTAL HAZARDS:** This product is toxic to fish, shrimp, crabs and other aquatic organisms. Do not apply directly to water. Do not apply where runoff is likely to occur. Do not apply when weather conditions favor drift from areas treated. Do not contaminate water by cleaning of equipment or disposal of wastes.

This product is highly toxic if exposed to direct treatment or residues on crops. Protective information may be obtained from your Cooperative Agricultural Extension Service. **PHYSICAL OR CHEMICAL HAZARDS:** Do not use or store near heat or open flame.

Chevron Chemical Company © 1988  
Ortho Consumer Products Division  
P.O. Box 5047  
San Ramon CA 94583-0947  
Product 1992 Made in U.S.A.  
Form C32-A  
EPA Reg. No. 239-738  
EPA Est. 239 MD-1

**DIRECTIONS FOR USE:** It is a violation of law to use this product in a manner inconsistent with its label. **READ ENTIRE LABEL. USE STRICTLY IN ACCORDANCE WITH LABEL PRECAUTIONARY STATEMENTS AND DIRECTIONS.**

**DIRECTIONS:** Spray thoroughly covering upper and lower leaf surfaces or other infested plant surfaces as specified. Can be used up to 3 days of harvest on food crops as specified. Make new dilution for each use. NOTE: 3 teaspoons (15 cc) per gallon = 1/2 oz. **CONTAINS SPREADER.** Contains ORTHEX<sup>TM</sup>, a superior wetting agent for better insect control. ORTHEX makes your spray spread more and stick better to cover insects on smooth, rough or waxy plant surfaces.

**ORNAMENTALS (Roses, Camellias, Azaleas, Stocks, Chrysanthemums, Evergreens):** 2 teaspoons to 1 gal. water. Red Spider Mite, Spruce Mite, Mealybugs, Aphids, Woolly Apher, Whiteflies, Thrips, Tarnished Plant Bug, Fourlined Leaf Bug, Japanese Leafhopper, Japanese Beetle Adults, Box Elder Bug; 1 Tablespoon (15 cc) per gal. water. Scales (Black Scale, Soft Brown Scale, Oyster Shell Scale); 2 Tablespoons per gal. water. Do not use on Boston Maidenhair and Pteris ferns, Camellia Juniper and some species of Creosote (example: Jade Plant).

Combination Spray with Fungicide on Roses—ORTHO FUNGIMEX<sup>®</sup> (Rose Disease Control) may be mixed with this product when listed insects and diseases are listed on roses. Follow directions and precautions on both labels.

**FRUIT (Apples, Pears, Grapes, Apricots, Cherries, Peaches, Strawberries)—Adults:** 2 teaspoons to 1 gal. water. Codling Moth, Tent Caterpillar, Red-Banded Leafhopper, Plum Curculio, Bud Moth, Fruit Tree Leafroller, Strawberry Leafhopper, Red Spider Mite, Mealybugs, Woolly Apher, Whiteflies, Thrips, Tarnished Plant Bug, Fourlined Leaf Bug, Grape Leafhopper, Pear Psyllid, Japanese Beetle; 1 Tablespoon (15 cc) per gal. water. Scale Crawlers; 2 Tablespoons per gal. water. Malathion may cause injury to McIntosh and Cortland varieties of apples, to Bosc pears and Ribier grapes. Do not apply to Pears within 1 day of harvest or to Apricots and Peaches within 7 days of harvest.

**CYRUS (Oranges, Tangerines, Grapefruit, Lemons, Limes) AND MANGO—Aphids, Whiteflies, Black Scale, Purple Scale, Yellow Scale, Florida Red Scale, Thrips:** 2 teaspoons per gal. water. Thorough coverage of branches and upper and lower leaf surfaces is necessary to control insects. Do not apply during full bloom. Do not apply within 7 days of harvest.

**VEGETABLES:** Numbers in ( ) indicate days required between last application and harvest. Asparagus (1), Beans (1), Beets (7), Broccoli (3), Brussels Sprouts (7), Cabbage (7), Cantaloupe (1), Cauliflower (7), Cucumbers (1), Celery (7), Collards (7), Egg Plant (3), Endive (7), Garlic (3), Kale (7), Lettuce (3), Lettuce, Head (7), Leaf (14), Melons (1), Mustard Greens (7), Okra (1), Onions (3), Peas (3), Peppers (3), Potatoes (0), Pumpkin (3), Radish (7), Rutabagas (3), Shallots (3), Squash (1), Spinach (7), Strawberries (3), Sweet Potatoes (3), Swiss Chard (7), Tomatoes (1), and Turnips (7).

**TO CONTROL:** Aphids—Use 2 teaspoons per gallon of water. **TO CONTROL:** Asparagus Beetle, Bean Leaf Beetle, Blister Beetle, Cabbage Looper, Harlequin Cabbage Bug, Imported Cabbageworm, Japanese Beetle, Leafminers, Leafhoppers, Lygus Bug, Mexican Bean Beetle, Onion Maggot, Fleas, Onion Thrips, Pickleworm, Red Spider Mite, Strawberry Leafhopper, Strawberry Root Weevil, Thrips and Whiteflies—Use 1 Tablespoon per gallon of water. **TO CONTROL:** Cucumber Beetles and Squash Vine Borers—Use 4 teaspoons per gallon of water.

#### \*DO NOT APPLY UNLESS LEAVES ARE DRY.

**FLEAS (Dogs and Cats) Animal Quarters:** 10 Tablespoons (5 oz.) per gallon of water. Spray kennels, pens, yards, lawns and under houses, at the rate of 1 gallon diluted spray in a tank-type sprayer per 1000 square feet. Remove animals before treatment, putting in fresh bedding after treatment.

**HOUSE FLIES: Around Dwellings (outside only), Outbuildings, Chicken Houses, Stables, Dog Kennels, Patis, Garbage Containers—SPRAY APPLICATION:** 8 Tablespoons (3 oz.) to 1 gal. water. Spray around house foundation, under porches, along fences, shrubbery and other infested areas. Use 1 gal. diluted spray to 1,000 sq. ft. area. **DO NOT APPLY THIS DOSAGE TO ANIMALS.** Maintain sanitary conditions around barns, outbuildings and other areas to prevent fly breeding.

**HOUSEHOLD PESTS—OUTDOORS ONLY (Roaches, Ants, Spiders, Mosquitoes, Silverfish, Crickets, Clover Mites, Earwigs):** 8 Tablespoons (4 oz.) per gal. water. Apply by means of a coarse spray or paint brush to firewood piles. Clover Mites around outside of dwellings and on lawns—2 teaspoons per gal. water. Spray lower foundation of house as well as ground, lawns and plants in an area 10 ft. wide along side of house. Repeat as necessary.

**Outside residual adult Mosquito control—** 9 Tablespoons (4 1/2 oz.) per gal. water. Spray foundation of house, shrubs, low trees and lawn areas. Repeat as necessary. **DO NOT USE IN THE HOME.**

#### STORAGE AND DISPOSAL

**STORAGE:** Keep pesticide in original container. Do not put concentrate or dilute into food or drink containers. Avoid contamination of food and foodstuffs. Store in a cool, dry place, preferably in a locked storage area. Do not store diluted spray.

**DISPOSAL: PRODUCT—** Partially filled bottle may be disposed of by securely wrapping original container in several layers of newspaper and discard in trash container. Do not reuse empty bottle. Rinse thoroughly before discarding in trash.

**NOTICE:** Buyer assumes all responsibility for safety and use not in accordance with directions.