



Increasing In-Person Instruction

Jaime Alicea, Superintendent

March 22, 2021

Agenda

1. New Guidance
2. Proposed Return
3. District Preparations
4. School Level Proposals



K-12 Health Guidance

NYS DEPARTMENT OF HEALTH

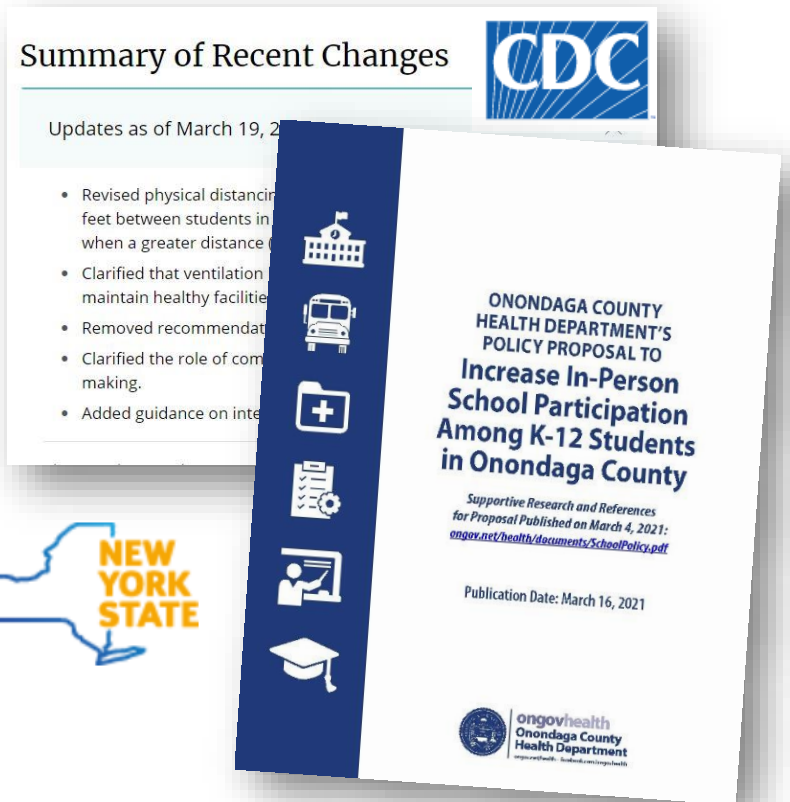
Social Distancing: Responsible Parties must maintain protocols and procedures for students, faculty, and staff to ensure appropriate social distancing to protect against the transmission of the COVID-19 virus when on school grounds and in school facilities. Specifically, appropriate social distancing means six feet of space in all directions between individuals or use of appropriate physical barriers between individuals that do not adversely affect air flow, heating, cooling, or ventilation, or otherwise present a health or safety risk. If used, physical barriers must be put in place in accordance with United States Department of Labor's Occupational Safety and Health Administration (OSHA) guidelines, and may include strip curtains, cubicle walls, code compliant materials, or other impermeable divider or partition.



Revised K-12 Health Guidance

CENTERS FOR DISEASE
CONTROL AND PREVENTION
March 19, 2021

Revised physical distancing
recommendations to reflect **at least
3 feet between students in
classrooms** and provide clearer
guidance when a greater distance
(such as 6 feet) is recommended.



Proposed Return:
Monday, April 12



District Preparations

Safe Students & Staff

- Arranged classroom furniture to support social distancing
- 15,000 additional desk partitions (12,000 current partitions)
- 15,000 additional face shields (12,000 currently in stock)
- Secured 33,175 children's masks and 49,000 adult masks
- Ordered 270 wrist and forehead thermometers
- Floor decals and signage posted
- Water bottle fillers being installed
- Office partitions in all schools



District Preparations

Safe Students & Staff

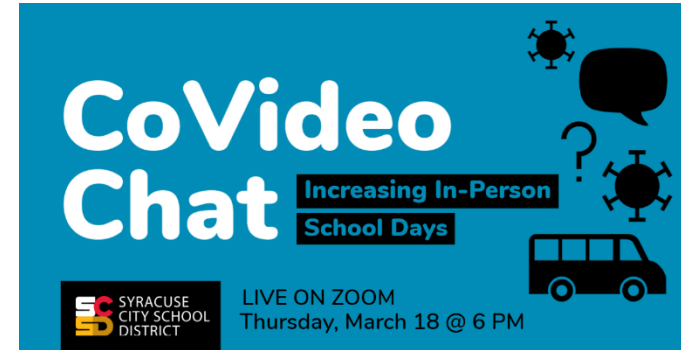
- Air purifiers in all classrooms
- Heating, ventilation and air conditioning maintenance
 - Increased coil, diffuser, and filtration cleaning
- Public Health Emergency Communicable Disease Protocols
 - Pandemic Response Plan
 - Distributed 2-week supplies of PPE to each school
- SCSD Cares About Your Mental Health campaign
- Social emotional support plans, lessons and resources for students outlined for final marking period



District Preparations

Feedback & Input Sessions

- Union Presidents-3/3 and 3/11
 - STA and SAAS-2/23
- Building principals-2/25, 3/1, and 3/12
- Parent feedback session and CoVideo Chat-3/18
 - 600 participants, livestreamed for the entire community to participate
 - Staff and families engaged in Q and A
- Superintendent Teacher Advisory Committee-3/17
 - 50 teachers and STA President and Vice President
- Incorporation of STA focus group survey data
- Superintendent Student Cabinet-2/24 and 3/17
- Parent and student Survey (11,913 responses)



PreK-5 Return to School In-Person Schedule

Monday
8-2 PM

Tuesday
8-2 PM

Wednesday
8-2 PM

Thursday
8-2 PM

Friday
8-2 PM

- Maintain physical distance of 3 feet between students in classrooms
 - Assigned seating, with partitions
- Student Time 8:00 to 2:00 (if possible, pending transportation guidance)
- Teacher Time 7:45 to 2:45
 - Franklin's ELT is an exception
 - HW Smith's ELT is an exception
- Outreach will take place for remote learners and Tiers 2 and 3 in-person students
 - 7:45-8:00 and 2:00-2:45 on days when PD is not offered after school



PreK-5 Return to School Specials and Lunch Proposal

- Specials in-person can take place in Art classrooms, Music classrooms, and Gym for in-person students with special teachers
 - Note: Students in PE class must keep students six feet apart; use of outdoor space during good weather is encouraged
 - Visual arts should follow 3 feet with desk partitions
 - Choral and instrumental music classes have special guidance
 - Assigned seating with desk partitions
 - No pool usage at this time
- Remote learners view specials video lessons asynchronously and complete work in Seesaw (special area teachers follow up on Seesaw)
- Lunch in classroom or cafeteria 3ft apart
 - Schools should develop lunch plans based on seating, space, etc. Some schools may rotate classroom with cafeteria
 - Barriers
 - Assigned seating
- LMS and other school staff will support remote learners, families, and teachers, ensuring support is available all day



PreK-5 Return to School

Supporting Remote Learners

- Depending on balance of remote and in-person learners at each grade level:
 - Virtual station rotation
 - Fully remote teacher assigned to remote learners
- Continuing WCNY programming and on-demand viewing
- Seesaw, paper packets, evening academic program support for grades K-2, virtual afterschool programming, etc.
- Synchronous instruction 5 days each week will continue
 - Specials will remain asynchronous with Seesaw work for remote learners
- Remote learners will receive 5-day meal kits on Wednesdays
- **Oasis:** will attend five days a week
- **McCarthy Elementary:** will attend five days a week



PreK-5 Return to School

Demonstration Lessons

- District will continue to film Demonstration Teachers for lessons and resources
- Demonstration Teachers will provide PD each week
 - A schedule for subject areas and grade levels is being developed
 - Demonstration Lesson PD sessions will be recorded and used during team meetings for in-person teachers who cannot attend afterschool PD
- We will work to support pace of learning as consistent as possible for remote and in-person learning



Grades 6-8 Return to School

In-Person Schedule

Monday 8:45-12:45 PM	Tuesday 8:45-12:45 PM	Wednesday REMOTE	Thursday 8:45-12:45 PM	Friday 8:45-12:45 PM
-------------------------	--------------------------	---------------------	---------------------------	-------------------------

- Greater number of students engaging in full-remote instruction
 - Maintain Wednesday to provide district technical assistance for remote learning program and student outreach
- Students Time: 8:45 to 12:45, remote hours 1:50-3:40
- Teachers Time: 8:40 to 3:40
 - Lincoln's ELT is an exception
 - HW Smith's ELT is an exception
- Maintain physical distance of 3 feet between students
 - Assigned seating
 - Barriers
- Remote learners will continue with current synchronous learning schedule Monday, Tuesday, Thursday and Friday
- Meal kits will be available for fully-remote learners



Grades 6-8 Return to School Specials Proposal

- Specials in-person can take place for in-person students with special teachers **if it is currently scheduled between 8:45 to 12:45**
 - Note: Students in PE class must keep students six feet apart; use of outdoor space during good weather is encouraged
 - Visual arts should follow 3 feet with desk partitions
 - Choral and instrumental music classes have special guidance
 - Assigned seating with desk partitions
 - No pool usage at this time
- Remote students will attend their specials courses remotely, as will students scheduled in the afternoon
- Wednesday is remote asynchronous for all students
- Outreach logs will be completed on Wednesdays
- Professional Development Demonstration Lessons will take place in the p.m.
- LMS and other school staff will support remote learners, families, and teachers, ensuring support is available all day
- **Oasis:** will attend five days a week
- **McCarthy Middle:** will continue with their current schedule



High School Return to School In-Person Schedule

EXAMPLE

Monday 8:45-12:45 PM	Tuesday REMOTE	Wednesday REMOTE	Thursday 8:45-12:45 PM	Friday REMOTE
-------------------------	-------------------	---------------------	---------------------------	------------------

- Highest number of students engaging in full-remote instruction
- Monday and Thursday, Tuesday and Friday, or 4 days per week (special classes and ENL students)
 - Students remain in sections with current peers and teachers for the two days of in-person instruction
 - Minimize schedule and teacher changes
 - Students Time: 8:45 to 12:45, remote hours 1:50-4:40
 - Teachers Time: 8:40 to 3:40 or 9:40-4:40
- Maintain physical distance of 3 feet between students
 - Assigned seating
 - Barriers
- Remote learners will continue with current synchronous learning schedule Monday, Tuesday, Thursday and Friday
 - Wednesday will be for technical assistance and outreach for remote program
- Meal kits will be available for fully-remote learners



High School Return to School

Related Studies

- Related Studies in-person can take place for in-person students with related studies teachers **if it is currently scheduled between 8:45 to 12:45**
 - Note: Students in PE class must keep students six feet apart; use of outdoor space during good weather is encouraged
 - Visual arts should follow 3 feet with desk partitions
 - Choral and instrumental music classes have special guidance
 - Assigned seating with desk partitions
 - No pool usage at this time
- Remote students will attend their related studies courses remotely, as will students scheduled in the afternoon
- Wednesday is remote asynchronous for all students
- Outreach logs will be completed on Wednesdays
- Professional Development Demonstration Lessons will take place in the a.m.
- LMS and other school staff will support remote learners, families, and teachers, ensuring support is available all day
- **McCarthy High:** will continue with their current schedule
- **Promise:** will continue with their current schedule



Next Steps: Communication Plan

- Superintendent letter to families will be mailed home and posted online
- Robo calls will begin this week
- Share with staff return-to-work expectations
 - April 5-Non-instructional staff
 - April 6-Instructional staff
 - Including Wednesdays for grades PreK-12, with time on March 24 and April 7 as classroom setup day
 - Review of school expectations and social emotional learning strategies
 - SCORE student-led training session
- Office of Family Engagement and Superintendent will hold CoVideo Chats with families
- Principals will make school-based robo calls and TalkingPoints translation texts to families and students
- Schools will reach out with individual schedule or teacher changes



Next Steps: Planning

- PreK-5 grades development of lunch and recess plans
- Begin developing classroom lists and teacher assignments based on new pods identified in SchoolTool and remote teaching needs
- Schools develop locker and cubby use plans
- Determine tech support plan for each school's remote learners
- Special Education is meeting with each school to discuss TA assignments for returning students
- Addressing concerns raised by bargaining units
- Facilities is working with outside agencies to minimize building use outside of school hours and support cleaning opportunities
 - Nightly disinfecting and weekend cleaning
- Schedule rapid COVID testing in schools with the County
 - Beginning April 6, 2021





Thank you!