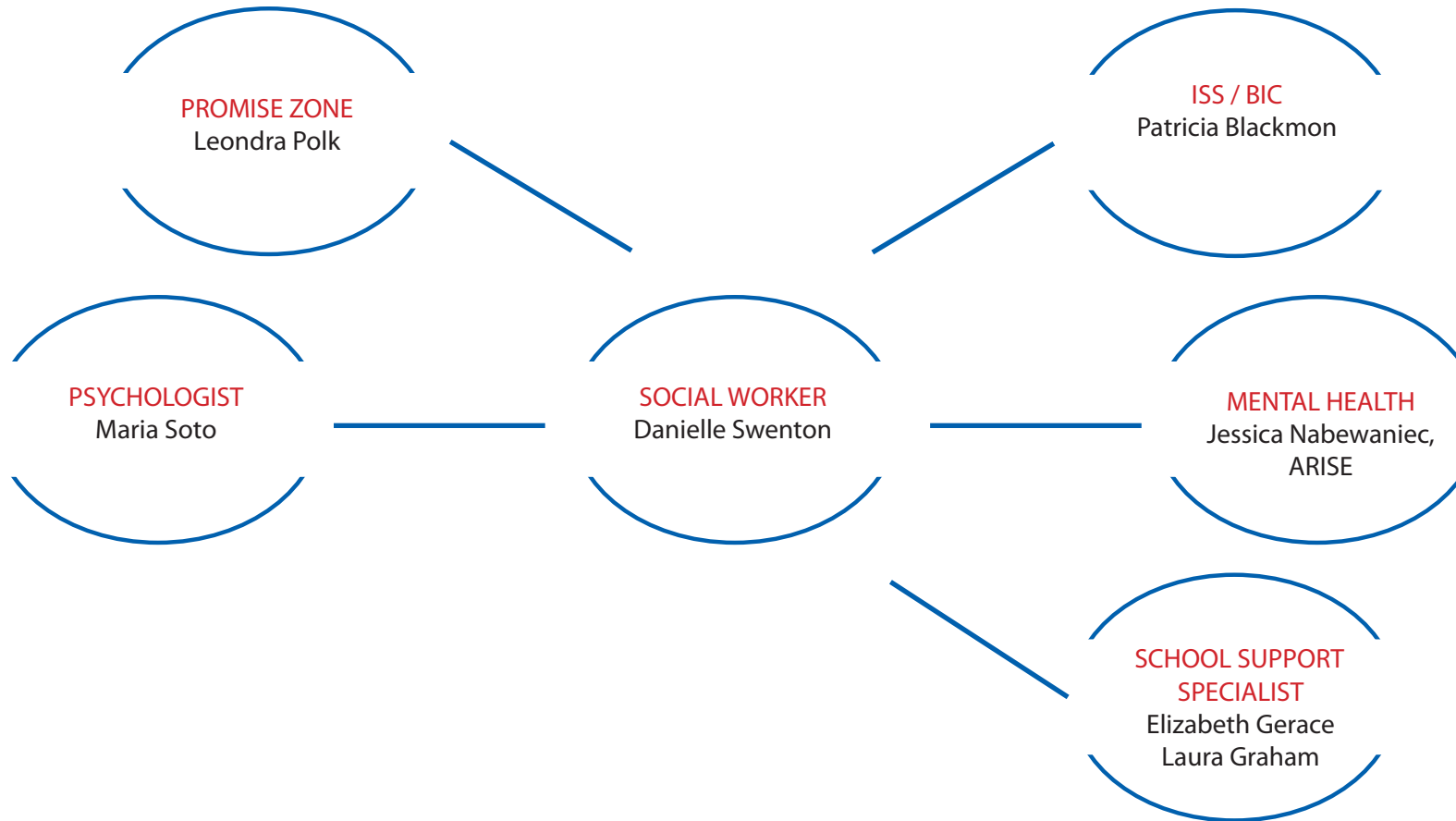


# Organization of Student Support Services

## Bellevue Elementary School



The School Social Workers lead a team of multiple partners committed to meeting the needs of the students through supports and interventions. For information about these services or to discuss your student, please call the School Social Worker at 435-4520.

## **Roles of Support Staff in Buildings**

### **Lead Social Worker**

A designated social worker who coordinates all support staff, both internal and external, and leads the work of ensuring that all students have equitable access to services and interventions that they need. The Lead Social Worker will also facilitate the intervention team in this work.

### **Promise Zone Specialist**

The Promise Zone Specialist assists in identifying youth and delivering interventions to increase school functionality and supports students' school functionality through the use of interventions such as collaborative problem-solving and restorative conferencing.

### **Student Assistance Counselors**

Contact Community Services provides this school-based counseling program based on Project SUCCESS and using mental health professionals to assist youth and their families with counseling, education, consultation and referral services.

### **Mental Health Clinicians**

Presently there are 23 Mental Health Clinic Satellites with a staff of 47 whose mission is to match students' emotional and behavioral needs with effective interventions.

### **DASA Coordinator and DASA Coach**

A school administrator serves as the DASA (Dignity for All Students Act) Coordinator to investigate and process all reported bullying and harassment incidents. The DASA coach is a student support team member who ensures that all DASA prevention activities and DASA student interventions are delivered in a timely manner.

### **Student Support Coach**

A student support team member (counselor, social worker, psychologist, student behavior specialist, youth advocate, youth development specialist, case manager or SPED collaborative teacher) or teacher volunteer who provides coaching, skill instruction and support to specific students who need an on-going intervention and close progress monitoring.

### **School Psychologist**

School psychologists are uniquely qualified members of school teams that support students' ability to learn and teachers' ability to teach. They apply expertise in mental health, learning and behavior to help children and youth succeed academically, socially, behaviorally and emotionally.

### **School Counselor**

The school counselor is responsible for school counselors implement a comprehensive school counseling program that promotes and enhances student achievement. Their work is differentiated by attention to developmental stages of student growth, including the needs, tasks and student interests related to those stages.

### **Behavior Intervention Center Staff**

The staff member assigned to the Behavior Intervention Center is a teaching assistant. In elementary and high schools this staff member supervises the BIC and ISS. This staff member is responsible for making sure the student visit is documented and that the student receives the appropriate support.

### **Huntington Family Support Specialists**

The Support Specialists work to increase student success by improving family functioning and decreasing risk, ensuring students have access to needed supports and services both at school and in the community, and increasing parent involvement in their child's education and student engagement in school. The focus is on helping students and families to identify and remove barriers to student success and school engagement.

### **Hillside Youth Advocate**

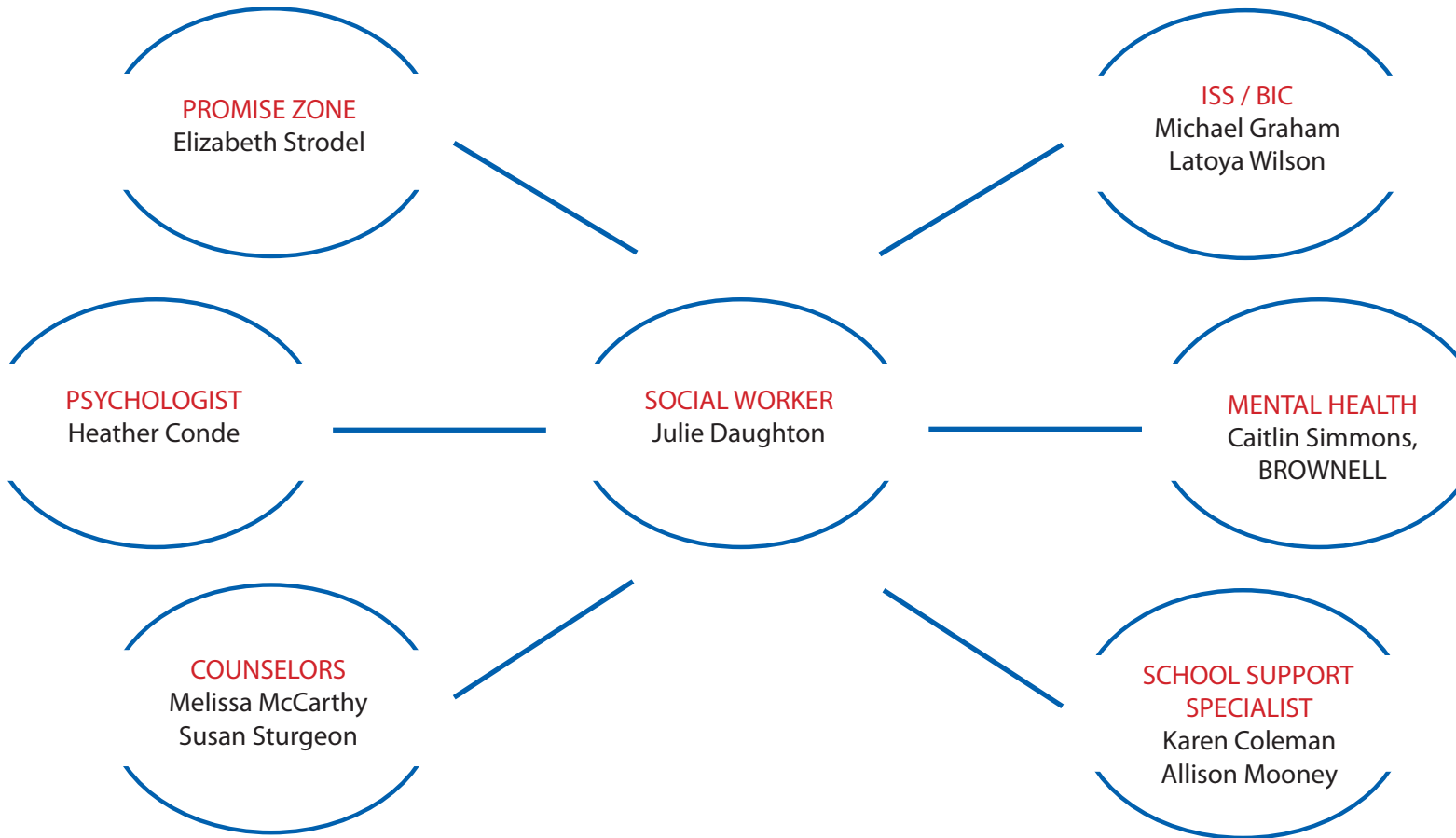
The Hillside Youth Advocates are on-site daily to support students in managing their behavior by setting behavioral expectations, developing individualized behavior plans, providing counseling for students, monitoring student progress through daily reports and working with parents to reinforce behavior expectations at home.

### **Transition Coach**

A student support team member (counselor, social worker, psychologist, student behavior specialist, youth advocate, youth development specialist, case manager, or SPED collaborative teacher) or teacher volunteer who provides coaching, skill instruction and support to specific students who are returning from a short-term or long-term suspension, alternative program, or juvenile facility or incarceration.

# Organization of Student Support Services

## Clary Middle School



The School Social Workers lead a team of multiple partners committed to meeting the needs of the students through supports and interventions. For information about these services or to discuss your student, please call the School Social Worker at 435-4411.

## **Roles of Support Staff in Buildings**

### **Lead Social Worker**

A designated social worker who coordinates all support staff, both internal and external, and leads the work of ensuring that all students have equitable access to services and interventions that they need. The Lead Social Worker will also facilitate the intervention team in this work.

### **Promise Zone Specialist**

The Promise Zone Specialist assists in identifying youth and delivering interventions to increase school functionality and supports students' school functionality through the use of interventions such as collaborative problem-solving and restorative conferencing.

### **Student Assistance Counselors**

Contact Community Services provides this school-based counseling program based on Project SUCCESS and using mental health professionals to assist youth and their families with counseling, education, consultation and referral services.

### **Mental Health Clinicians**

Presently there are 23 Mental Health Clinic Satellites with a staff of 47 whose mission is to match students' emotional and behavioral needs with effective interventions.

### **DASA Coordinator and DASA Coach**

A school administrator serves as the DASA (Dignity for All Students Act) Coordinator to investigate and process all reported bullying and harassment incidents. The DASA coach is a student support team member who ensures that all DASA prevention activities and DASA student interventions are delivered in a timely manner.

### **Student Support Coach**

A student support team member (counselor, social worker, psychologist, student behavior specialist, youth advocate, youth development specialist, case manager or SPED collaborative teacher) or teacher volunteer who provides coaching, skill instruction and support to specific students who need an on-going intervention and close progress monitoring.

### **School Psychologist**

School psychologists are uniquely qualified members of school teams that support students' ability to learn and teachers' ability to teach. They apply expertise in mental health, learning and behavior to help children and youth succeed academically, socially, behaviorally and emotionally.

### **School Counselor**

The school counselor is responsible for school counselors implement a comprehensive school counseling program that promotes and enhances student achievement. Their work is differentiated by attention to developmental stages of student growth, including the needs, tasks and student interests related to those stages.

### **Behavior Intervention Center Staff**

The staff member assigned to the Behavior Intervention Center is a teaching assistant. In elementary and high schools this staff member supervises the BIC and ISS. This staff member is responsible for making sure the student visit is documented and that the student receives the appropriate support.

### **Huntington Family Support Specialists**

The Support Specialists work to increase student success by improving family functioning and decreasing risk, ensuring students have access to needed supports and services both at school and in the community, and increasing parent involvement in their child's education and student engagement in school. The focus is on helping students and families to identify and remove barriers to student success and school engagement.

### **Hillside Youth Advocate**

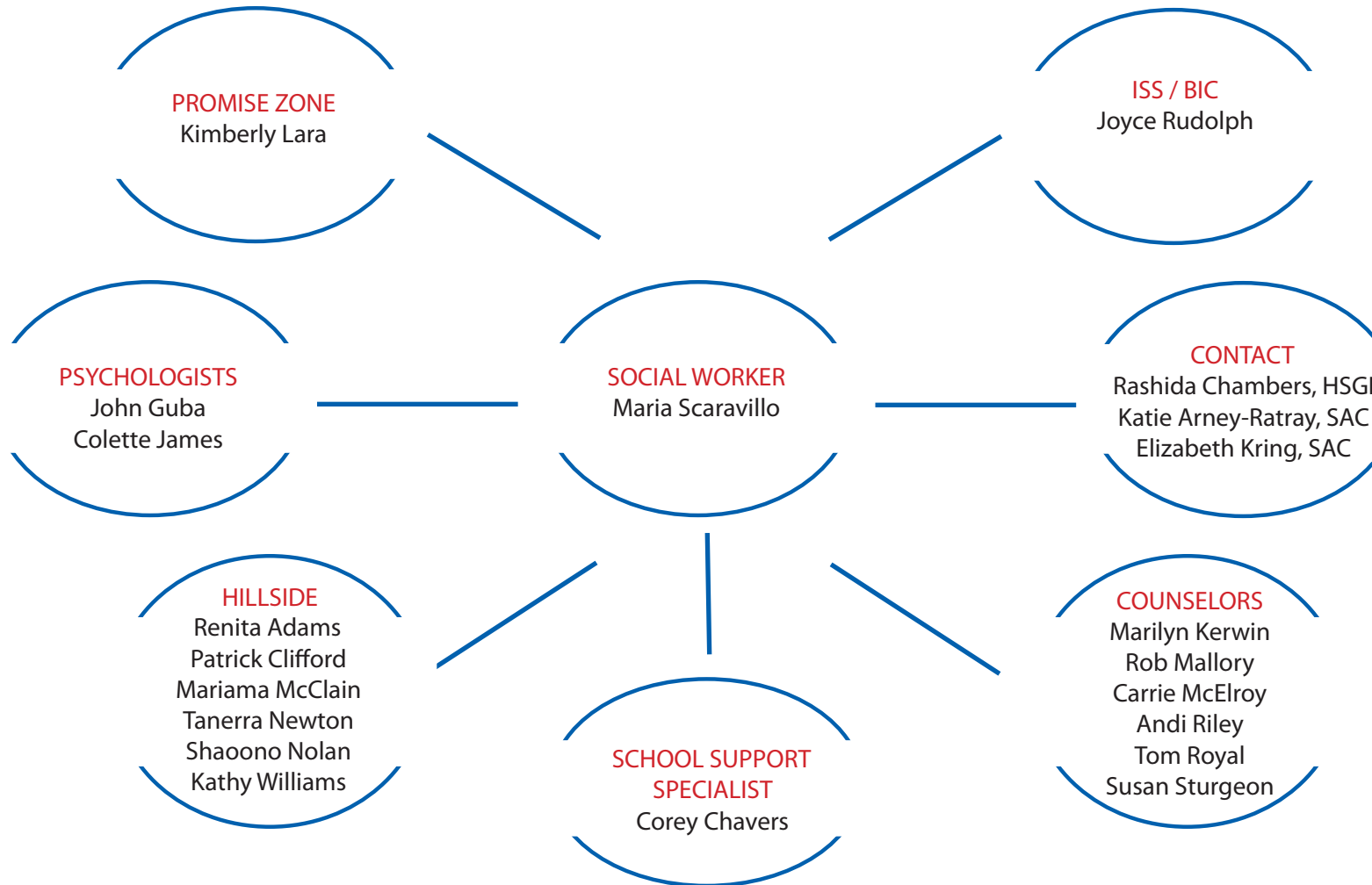
The Hillside Youth Advocates are on-site daily to support students in managing their behavior by setting behavioral expectations, developing individualized behavior plans, providing counseling for students, monitoring student progress through daily reports and working with parents to reinforce behavior expectations at home.

### **Transition Coach**

A student support team member (counselor, social worker, psychologist, student behavior specialist, youth advocate, youth development specialist, case manager, or SPED collaborative teacher) or teacher volunteer who provides coaching, skill instruction and support to specific students who are returning from a short-term or long-term suspension, alternative program, or juvenile facility or incarceration.

# Organization of Student Support Services

## Corcoran High School



The School Social Workers lead a team of multiple partners committed to meeting the needs of the students through supports and interventions. For information about these services or to discuss your student, please call the School Social Worker at 435-4321.

## **Roles of Support Staff in Buildings**

### **Lead Social Worker**

A designated social worker who coordinates all support staff, both internal and external, and leads the work of ensuring that all students have equitable access to services and interventions that they need. The Lead Social Worker will also facilitate the intervention team in this work.

### **Promise Zone Specialist**

The Promise Zone Specialist assists in identifying youth and delivering interventions to increase school functionality and supports students' school functionality through the use of interventions such as collaborative problem-solving and restorative conferencing.

### **Student Assistance Counselors**

Contact Community Services provides this school-based counseling program based on Project SUCCESS and using mental health professionals to assist youth and their families with counseling, education, consultation and referral services.

### **Mental Health Clinicians**

Presently there are 23 Mental Health Clinic Satellites with a staff of 47 whose mission is to match students' emotional and behavioral needs with effective interventions.

### **DASA Coordinator and DASA Coach**

A school administrator serves as the DASA (Dignity for All Students Act) Coordinator to investigate and process all reported bullying and harassment incidents. The DASA coach is a student support team member who ensures that all DASA prevention activities and DASA student interventions are delivered in a timely manner.

### **Student Support Coach**

A student support team member (counselor, social worker, psychologist, student behavior specialist, youth advocate, youth development specialist, case manager or SPED collaborative teacher) or teacher volunteer who provides coaching, skill instruction and support to specific students who need an on-going intervention and close progress monitoring.

### **School Psychologist**

School psychologists are uniquely qualified members of school teams that support students' ability to learn and teachers' ability to teach. They apply expertise in mental health, learning and behavior to help children and youth succeed academically, socially, behaviorally and emotionally.

### **School Counselor**

The school counselor is responsible for school counselors implement a comprehensive school counseling program that promotes and enhances student achievement. Their work is differentiated by attention to developmental stages of student growth, including the needs, tasks and student interests related to those stages.

### **Behavior Intervention Center Staff**

The staff member assigned to the Behavior Intervention Center is a teaching assistant. In elementary and high schools this staff member supervises the BIC and ISS. This staff member is responsible for making sure the student visit is documented and that the student receives the appropriate support.

### **Huntington Family Support Specialists**

The Support Specialists work to increase student success by improving family functioning and decreasing risk, ensuring students have access to needed supports and services both at school and in the community, and increasing parent involvement in their child's education and student engagement in school. The focus is on helping students and families to identify and remove barriers to student success and school engagement.

### **Hillside Youth Advocate**

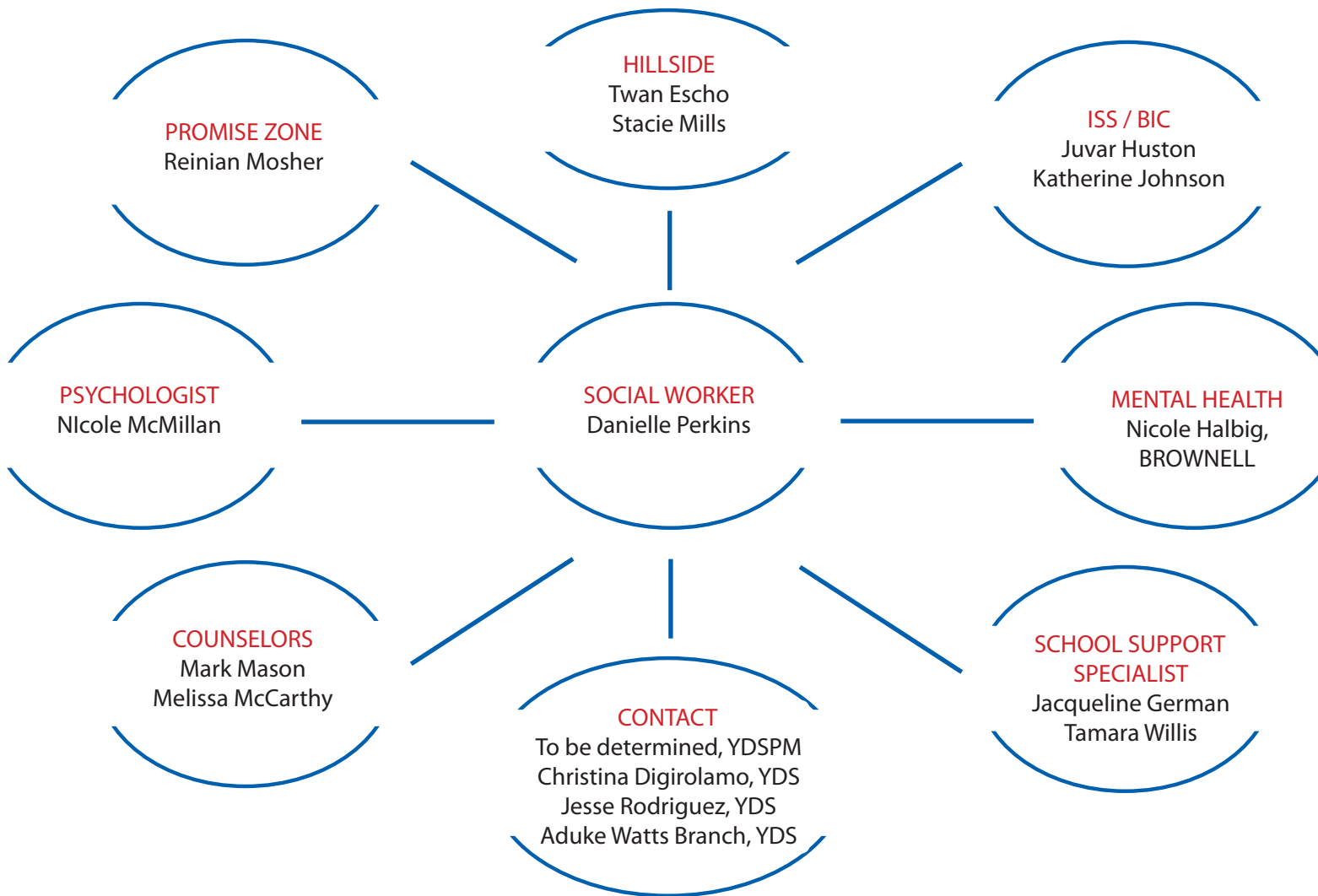
The Hillside Youth Advocates are on-site daily to support students in managing their behavior by setting behavioral expectations, developing individualized behavior plans, providing counseling for students, monitoring student progress through daily reports and working with parents to reinforce behavior expectations at home.

### **Transition Coach**

A student support team member (counselor, social worker, psychologist, student behavior specialist, youth advocate, youth development specialist, case manager, or SPED collaborative teacher) or teacher volunteer who provides coaching, skill instruction and support to specific students who are returning from a short-term or long-term suspension, alternative program, or juvenile facility or incarceration.

# Organization of Student Support Services

## Danforth Middle School



The School Social Workers lead a team of multiple partners committed to meeting the needs of the students through supports and interventions. For information about these services or to discuss your student, please call the School Social Worker at 435-4535.

## **Roles of Support Staff in Buildings**

### **Lead Social Worker**

A designated social worker who coordinates all support staff, both internal and external, and leads the work of ensuring that all students have equitable access to services and interventions that they need. The Lead Social Worker will also facilitate the intervention team in this work.

### **Promise Zone Specialist**

The Promise Zone Specialist assists in identifying youth and delivering interventions to increase school functionality and supports students' school functionality through the use of interventions such as collaborative problem-solving and restorative conferencing.

### **Student Assistance Counselors**

Contact Community Services provides this school-based counseling program based on Project SUCCESS and using mental health professionals to assist youth and their families with counseling, education, consultation and referral services.

### **Mental Health Clinicians**

Presently there are 23 Mental Health Clinic Satellites with a staff of 47 whose mission is to match students' emotional and behavioral needs with effective interventions.

### **DASA Coordinator and DASA Coach**

A school administrator serves as the DASA (Dignity for All Students Act) Coordinator to investigate and process all reported bullying and harassment incidents. The DASA coach is a student support team member who ensures that all DASA prevention activities and DASA student interventions are delivered in a timely manner.

### **Student Support Coach**

A student support team member (counselor, social worker, psychologist, student behavior specialist, youth advocate, youth development specialist, case manager or SPED collaborative teacher) or teacher volunteer who provides coaching, skill instruction and support to specific students who need an on-going intervention and close progress monitoring.

### **School Psychologist**

School psychologists are uniquely qualified members of school teams that support students' ability to learn and teachers' ability to teach. They apply expertise in mental health, learning and behavior to help children and youth succeed academically, socially, behaviorally and emotionally.

### **School Counselor**

The school counselor is responsible for school counselors implement a comprehensive school counseling program that promotes and enhances student achievement. Their work is differentiated by attention to developmental stages of student growth, including the needs, tasks and student interests related to those stages.

### **Behavior Intervention Center Staff**

The staff member assigned to the Behavior Intervention Center is a teaching assistant. In elementary and high schools this staff member supervises the BIC and ISS. This staff member is responsible for making sure the student visit is documented and that the student receives the appropriate support.

### **Huntington Family Support Specialists**

The Support Specialists work to increase student success by improving family functioning and decreasing risk, ensuring students have access to needed supports and services both at school and in the community, and increasing parent involvement in their child's education and student engagement in school. The focus is on helping students and families to identify and remove barriers to student success and school engagement.

### **Hillside Youth Advocate**

The Hillside Youth Advocates are on-site daily to support students in managing their behavior by setting behavioral expectations, developing individualized behavior plans, providing counseling for students, monitoring student progress through daily reports and working with parents to reinforce behavior expectations at home.

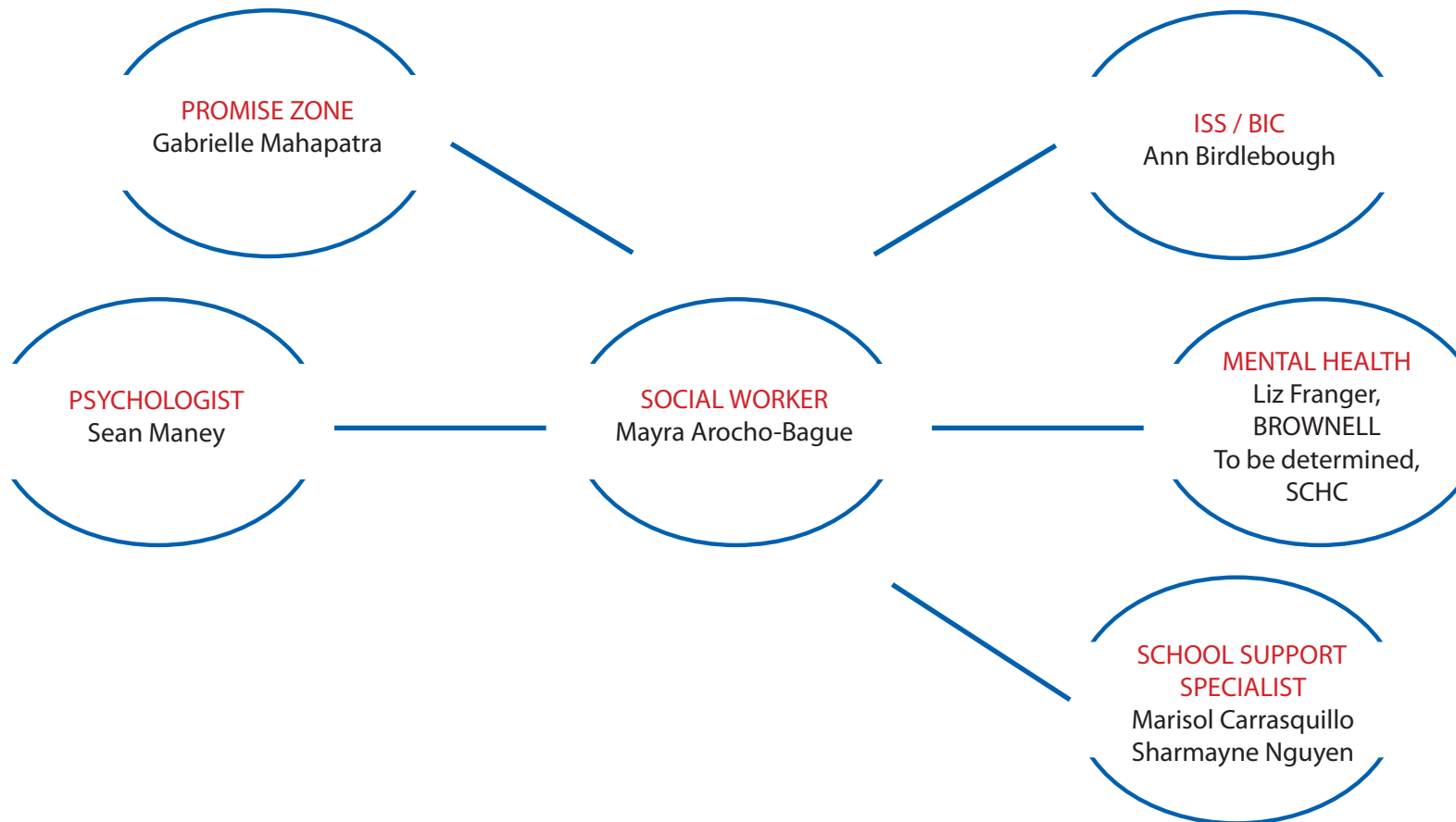
### **Transition Coach**

A student support team member (counselor, social worker, psychologist, student behavior specialist, youth advocate, youth development specialist, case manager, or SPED collaborative teacher) or teacher volunteer who provides coaching, skill instruction and support to specific students who are returning from a short-term or long-term suspension, alternative program, or juvenile facility or incarceration.



# Organization of Student Support Services

## Delaware Academy



The School Social Workers lead a team of multiple partners committed to meeting the needs of the students through supports and interventions. For information about these services or to discuss your student, please call the School Social Worker at 435-4540.

## **Roles of Support Staff in Buildings**

### **Lead Social Worker**

A designated social worker who coordinates all support staff, both internal and external, and leads the work of ensuring that all students have equitable access to services and interventions that they need. The Lead Social Worker will also facilitate the intervention team in this work.

### **Promise Zone Specialist**

The Promise Zone Specialist assists in identifying youth and delivering interventions to increase school functionality and supports students' school functionality through the use of interventions such as collaborative problem-solving and restorative conferencing.

### **Student Assistance Counselors**

Contact Community Services provides this school-based counseling program based on Project SUCCESS and using mental health professionals to assist youth and their families with counseling, education, consultation and referral services.

### **Mental Health Clinicians**

Presently there are 23 Mental Health Clinic Satellites with a staff of 47 whose mission is to match students' emotional and behavioral needs with effective interventions.

### **DASA Coordinator and DASA Coach**

A school administrator serves as the DASA (Dignity for All Students Act) Coordinator to investigate and process all reported bullying and harassment incidents. The DASA coach is a student support team member who ensures that all DASA prevention activities and DASA student interventions are delivered in a timely manner.

### **Student Support Coach**

A student support team member (counselor, social worker, psychologist, student behavior specialist, youth advocate, youth development specialist, case manager or SPED collaborative teacher) or teacher volunteer who provides coaching, skill instruction and support to specific students who need an on-going intervention and close progress monitoring.

### **School Psychologist**

School psychologists are uniquely qualified members of school teams that support students' ability to learn and teachers' ability to teach. They apply expertise in mental health, learning and behavior to help children and youth succeed academically, socially, behaviorally and emotionally.

### **School Counselor**

The school counselor is responsible for school counselors implement a comprehensive school counseling program that promotes and enhances student achievement. Their work is differentiated by attention to developmental stages of student growth, including the needs, tasks and student interests related to those stages.

### **Behavior Intervention Center Staff**

The staff member assigned to the Behavior Intervention Center is a teaching assistant. In elementary and high schools this staff member supervises the BIC and ISS. This staff member is responsible for making sure the student visit is documented and that the student receives the appropriate support.

### **Huntington Family Support Specialists**

The Support Specialists work to increase student success by improving family functioning and decreasing risk, ensuring students have access to needed supports and services both at school and in the community, and increasing parent involvement in their child's education and student engagement in school. The focus is on helping students and families to identify and remove barriers to student success and school engagement.

### **Hillside Youth Advocate**

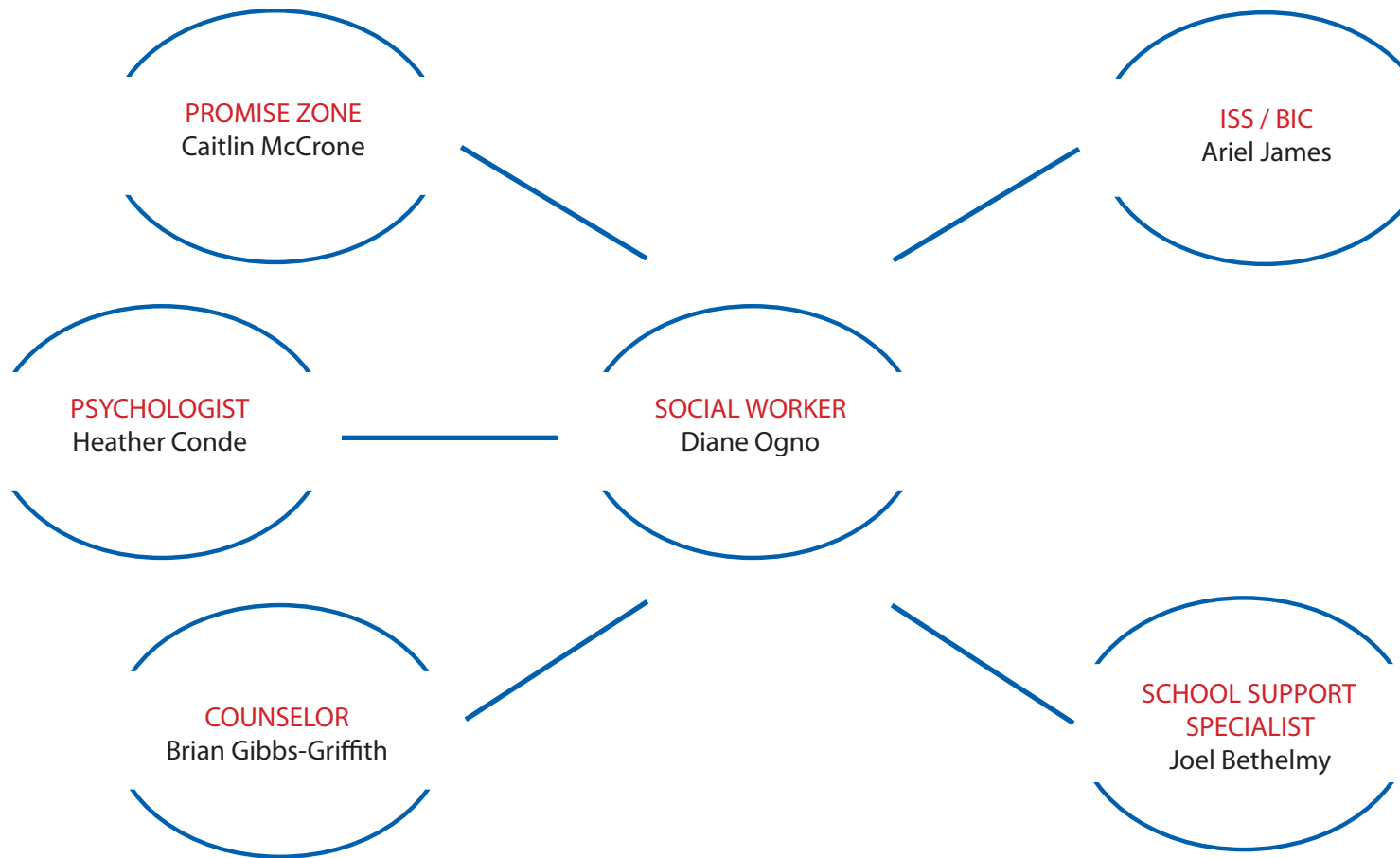
The Hillside Youth Advocates are on-site daily to support students in managing their behavior by setting behavioral expectations, developing individualized behavior plans, providing counseling for students, monitoring student progress through daily reports and working with parents to reinforce behavior expectations at home.

### **Transition Coach**

A student support team member (counselor, social worker, psychologist, student behavior specialist, youth advocate, youth development specialist, case manager, or SPED collaborative teacher) or teacher volunteer who provides coaching, skill instruction and support to specific students who are returning from a short-term or long-term suspension, alternative program, or juvenile facility or incarceration.

# Organization of Student Support Services

## Expeditionary Learning Middle School (ELMS)



The School Social Workers lead a team of multiple partners committed to meeting the needs of the students through supports and interventions. For information about these services or to discuss your student, please call the School Social Worker at 435-6218.

## **Roles of Support Staff in Buildings**

### **Lead Social Worker**

A designated social worker who coordinates all support staff, both internal and external, and leads the work of ensuring that all students have equitable access to services and interventions that they need. The Lead Social Worker will also facilitate the intervention team in this work.

### **Promise Zone Specialist**

The Promise Zone Specialist assists in identifying youth and delivering interventions to increase school functionality and supports students' school functionality through the use of interventions such as collaborative problem-solving and restorative conferencing.

### **Student Assistance Counselors**

Contact Community Services provides this school-based counseling program based on Project SUCCESS and using mental health professionals to assist youth and their families with counseling, education, consultation and referral services.

### **Mental Health Clinicians**

Presently there are 23 Mental Health Clinic Satellites with a staff of 47 whose mission is to match students' emotional and behavioral needs with effective interventions.

### **DASA Coordinator and DASA Coach**

A school administrator serves as the DASA (Dignity for All Students Act) Coordinator to investigate and process all reported bullying and harassment incidents. The DASA coach is a student support team member who ensures that all DASA prevention activities and DASA student interventions are delivered in a timely manner.

### **Student Support Coach**

A student support team member (counselor, social worker, psychologist, student behavior specialist, youth advocate, youth development specialist, case manager or SPED collaborative teacher) or teacher volunteer who provides coaching, skill instruction and support to specific students who need an on-going intervention and close progress monitoring.

### **School Psychologist**

School psychologists are uniquely qualified members of school teams that support students' ability to learn and teachers' ability to teach. They apply expertise in mental health, learning and behavior to help children and youth succeed academically, socially, behaviorally and emotionally.

### **School Counselor**

The school counselor is responsible for school counselors implement a comprehensive school counseling program that promotes and enhances student achievement. Their work is differentiated by attention to developmental stages of student growth, including the needs, tasks and student interests related to those stages.

### **Behavior Intervention Center Staff**

The staff member assigned to the Behavior Intervention Center is a teaching assistant. In elementary and high schools this staff member supervises the BIC and ISS. This staff member is responsible for making sure the student visit is documented and that the student receives the appropriate support.

### **Huntington Family Support Specialists**

The Support Specialists work to increase student success by improving family functioning and decreasing risk, ensuring students have access to needed supports and services both at school and in the community, and increasing parent involvement in their child's education and student engagement in school. The focus is on helping students and families to identify and remove barriers to student success and school engagement.

### **Hillside Youth Advocate**

The Hillside Youth Advocates are on-site daily to support students in managing their behavior by setting behavioral expectations, developing individualized behavior plans, providing counseling for students, monitoring student progress through daily reports and working with parents to reinforce behavior expectations at home.

### **Transition Coach**

A student support team member (counselor, social worker, psychologist, student behavior specialist, youth advocate, youth development specialist, case manager, or SPED collaborative teacher) or teacher volunteer who provides coaching, skill instruction and support to specific students who are returning from a short-term or long-term suspension, alternative program, or juvenile facility or incarceration.

# Organization of Student Support Services

## Fowler High School / Public Service Leadership Academy (PSLA)



The School Social Workers lead a team of multiple partners committed to meeting the needs of the students through supports and interventions. For information about these services or to discuss your student, please call the School Social Worker at 435-4376.

## **Roles of Support Staff in Buildings**

### **Lead Social Worker**

A designated social worker who coordinates all support staff, both internal and external, and leads the work of ensuring that all students have equitable access to services and interventions that they need. The Lead Social Worker will also facilitate the intervention team in this work.

### **Promise Zone Specialist**

The Promise Zone Specialist assists in identifying youth and delivering interventions to increase school functionality and supports students' school functionality through the use of interventions such as collaborative problem-solving and restorative conferencing.

### **Student Assistance Counselors**

Contact Community Services provides this school-based counseling program based on Project SUCCESS and using mental health professionals to assist youth and their families with counseling, education, consultation and referral services.

### **Mental Health Clinicians**

Presently there are 23 Mental Health Clinic Satellites with a staff of 47 whose mission is to match students' emotional and behavioral needs with effective interventions.

### **DASA Coordinator and DASA Coach**

A school administrator serves as the DASA (Dignity for All Students Act) Coordinator to investigate and process all reported bullying and harassment incidents. The DASA coach is a student support team member who ensures that all DASA prevention activities and DASA student interventions are delivered in a timely manner.

### **Student Support Coach**

A student support team member (counselor, social worker, psychologist, student behavior specialist, youth advocate, youth development specialist, case manager or SPED collaborative teacher) or teacher volunteer who provides coaching, skill instruction and support to specific students who need an on-going intervention and close progress monitoring.

### **School Psychologist**

School psychologists are uniquely qualified members of school teams that support students' ability to learn and teachers' ability to teach. They apply expertise in mental health, learning and behavior to help children and youth succeed academically, socially, behaviorally and emotionally.

### **School Counselor**

The school counselor is responsible for school counselors implement a comprehensive school counseling program that promotes and enhances student achievement. Their work is differentiated by attention to developmental stages of student growth, including the needs, tasks and student interests related to those stages.

### **Behavior Intervention Center Staff**

The staff member assigned to the Behavior Intervention Center is a teaching assistant. In elementary and high schools this staff member supervises the BIC and ISS. This staff member is responsible for making sure the student visit is documented and that the student receives the appropriate support.

### **Huntington Family Support Specialists**

The Support Specialists work to increase student success by improving family functioning and decreasing risk, ensuring students have access to needed supports and services both at school and in the community, and increasing parent involvement in their child's education and student engagement in school. The focus is on helping students and families to identify and remove barriers to student success and school engagement.

### **Hillside Youth Advocate**

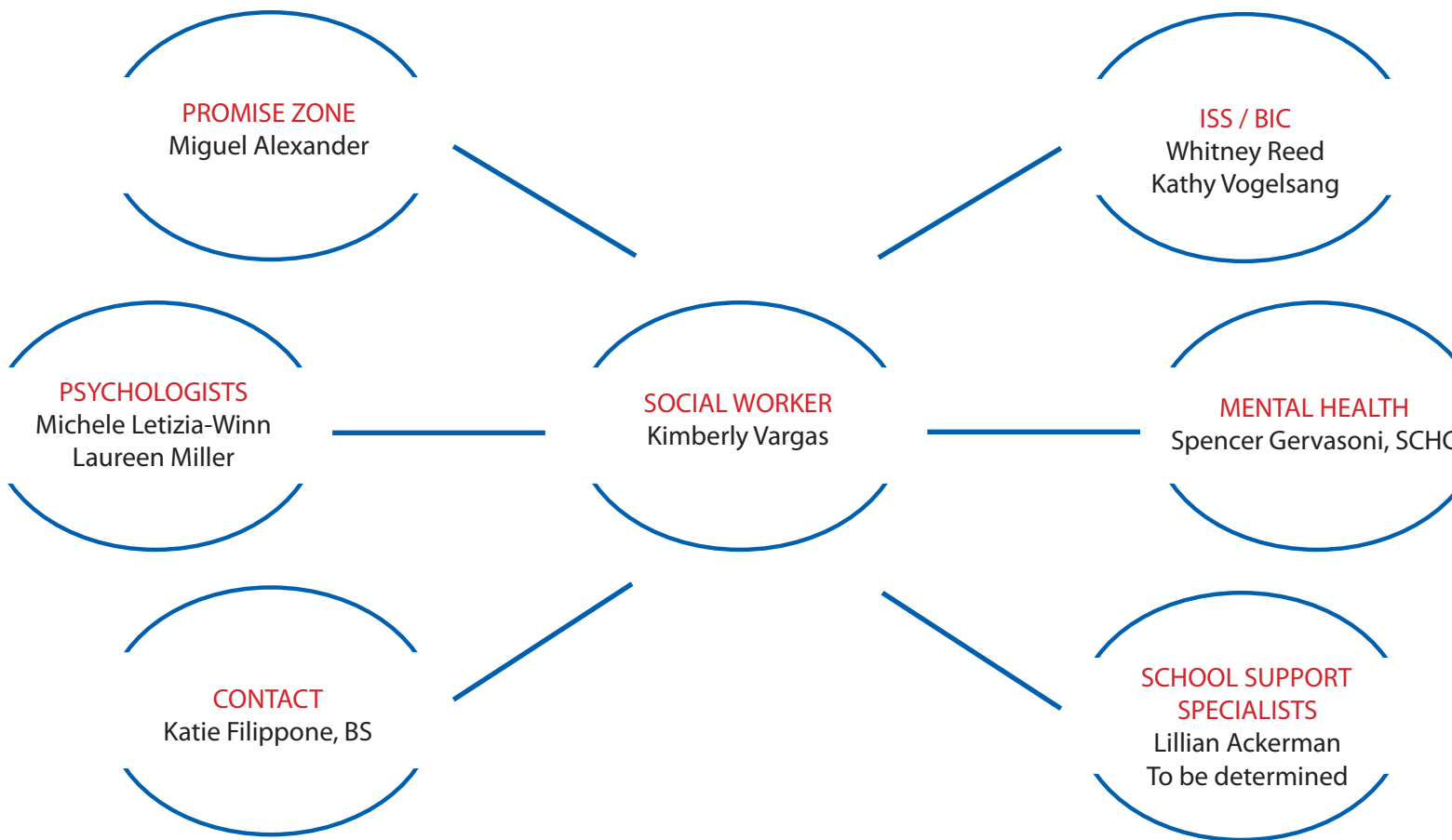
The Hillside Youth Advocates are on-site daily to support students in managing their behavior by setting behavioral expectations, developing individualized behavior plans, providing counseling for students, monitoring student progress through daily reports and working with parents to reinforce behavior expectations at home.

### **Transition Coach**

A student support team member (counselor, social worker, psychologist, student behavior specialist, youth advocate, youth development specialist, case manager, or SPED collaborative teacher) or teacher volunteer who provides coaching, skill instruction and support to specific students who are returning from a short-term or long-term suspension, alternative program, or juvenile facility or incarceration.

# Organization of Student Support Services

## Franklin Elementary School



The School Social Workers lead a team of multiple partners committed to meeting the needs of the students through supports and interventions. For information about these services or to discuss your student, please call the School Social Worker at 435-4550.

## **Roles of Support Staff in Buildings**

### **Lead Social Worker**

A designated social worker who coordinates all support staff, both internal and external, and leads the work of ensuring that all students have equitable access to services and interventions that they need. The Lead Social Worker will also facilitate the intervention team in this work.

### **Promise Zone Specialist**

The Promise Zone Specialist assists in identifying youth and delivering interventions to increase school functionality and supports students' school functionality through the use of interventions such as collaborative problem-solving and restorative conferencing.

### **Student Assistance Counselors**

Contact Community Services provides this school-based counseling program based on Project SUCCESS and using mental health professionals to assist youth and their families with counseling, education, consultation and referral services.

### **Mental Health Clinicians**

Presently there are 23 Mental Health Clinic Satellites with a staff of 47 whose mission is to match students' emotional and behavioral needs with effective interventions.

### **DASA Coordinator and DASA Coach**

A school administrator serves as the DASA (Dignity for All Students Act) Coordinator to investigate and process all reported bullying and harassment incidents. The DASA coach is a student support team member who ensures that all DASA prevention activities and DASA student interventions are delivered in a timely manner.

### **Student Support Coach**

A student support team member (counselor, social worker, psychologist, student behavior specialist, youth advocate, youth development specialist, case manager or SPED collaborative teacher) or teacher volunteer who provides coaching, skill instruction and support to specific students who need an on-going intervention and close progress monitoring.

### **School Psychologist**

School psychologists are uniquely qualified members of school teams that support students' ability to learn and teachers' ability to teach. They apply expertise in mental health, learning and behavior to help children and youth succeed academically, socially, behaviorally and emotionally.

### **School Counselor**

The school counselor is responsible for school counselors implement a comprehensive school counseling program that promotes and enhances student achievement. Their work is differentiated by attention to developmental stages of student growth, including the needs, tasks and student interests related to those stages.

### **Behavior Intervention Center Staff**

The staff member assigned to the Behavior Intervention Center is a teaching assistant. In elementary and high schools this staff member supervises the BIC and ISS. This staff member is responsible for making sure the student visit is documented and that the student receives the appropriate support.

### **Huntington Family Support Specialists**

The Support Specialists work to increase student success by improving family functioning and decreasing risk, ensuring students have access to needed supports and services both at school and in the community, and increasing parent involvement in their child's education and student engagement in school. The focus is on helping students and families to identify and remove barriers to student success and school engagement.

### **Hillside Youth Advocate**

The Hillside Youth Advocates are on-site daily to support students in managing their behavior by setting behavioral expectations, developing individualized behavior plans, providing counseling for students, monitoring student progress through daily reports and working with parents to reinforce behavior expectations at home.

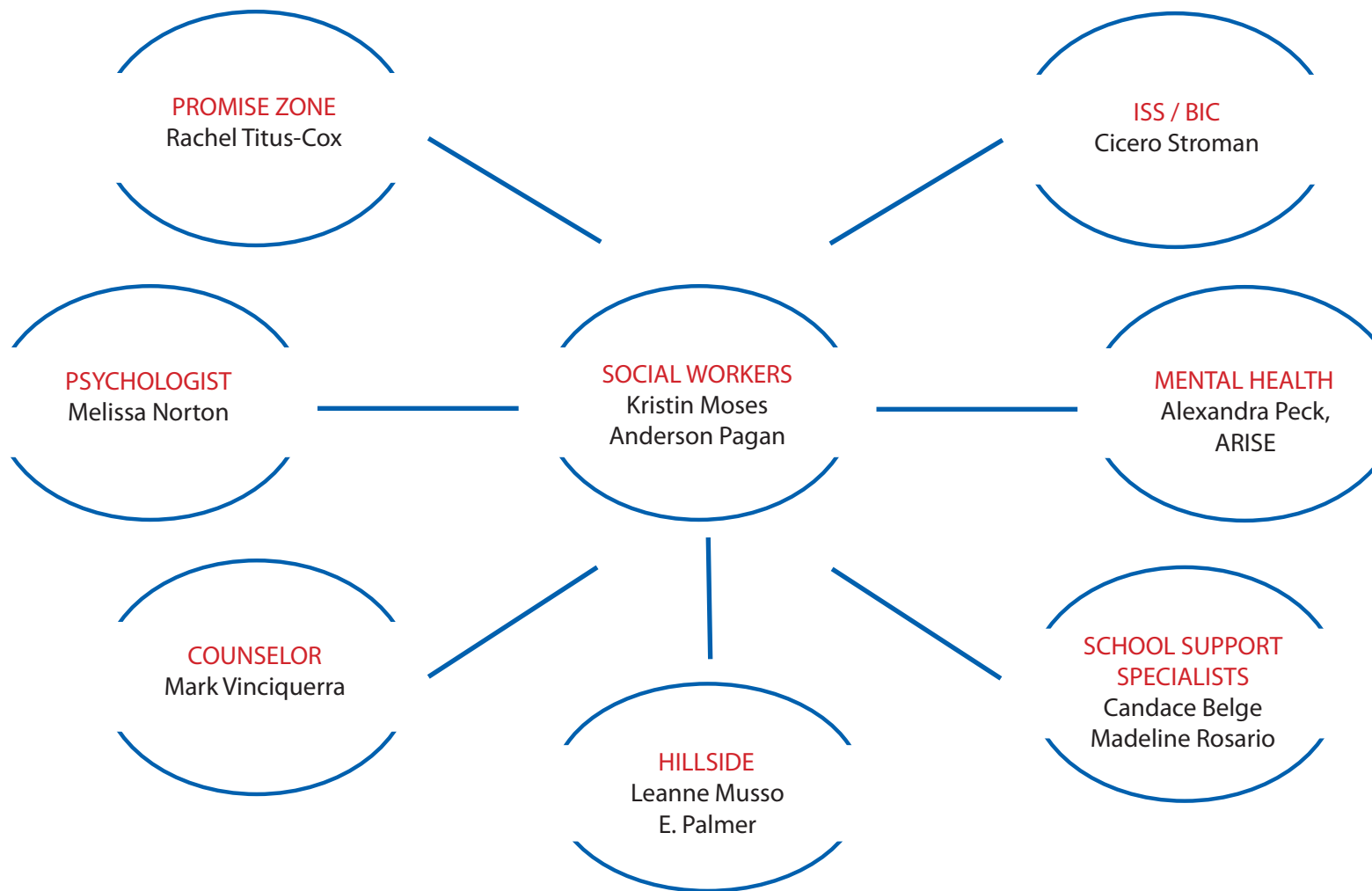
### **Transition Coach**

A student support team member (counselor, social worker, psychologist, student behavior specialist, youth advocate, youth development specialist, case manager, or SPED collaborative teacher) or teacher volunteer who provides coaching, skill instruction and support to specific students who are returning from a short-term or long-term suspension, alternative program, or juvenile facility or incarceration.



# Organization of Student Support Services

## Frazer Pre-K – 8 School



The School Social Workers lead a team of multiple partners committed to meeting the needs of the students through supports and interventions. For information about these services or to discuss your student, please call the School Social Worker at 435-4555.

## ***Roles of Support Staff in Buildings***

### ***Lead Social Worker***

A designated social worker who coordinates all support staff, both internal and external, and leads the work of ensuring that all students have equitable access to services and interventions that they need. The Lead Social Worker will also facilitate the intervention team in this work.

### ***Promise Zone Specialist***

The Promise Zone Specialist assists in identifying youth and delivering interventions to increase school functionality and supports students' school functionality through the use of interventions such as collaborative problem-solving and restorative conferencing.

### ***Student Assistance Counselors***

Contact Community Services provides this school-based counseling program based on Project SUCCESS and using mental health professionals to assist youth and their families with counseling, education, consultation and referral services.

### ***Mental Health Clinicians***

Presently there are 23 Mental Health Clinic Satellites with a staff of 47 whose mission is to match students' emotional and behavioral needs with effective interventions.

### ***DASA Coordinator and DASA Coach***

A school administrator serves as the DASA (Dignity for All Students Act) Coordinator to investigate and process all reported bullying and harassment incidents. The DASA coach is a student support team member who ensures that all DASA prevention activities and DASA student interventions are delivered in a timely manner.

### ***Student Support Coach***

A student support team member (counselor, social worker, psychologist, student behavior specialist, youth advocate, youth development specialist, case manager or SPED collaborative teacher) or teacher volunteer who provides coaching, skill instruction and support to specific students who need an on-going intervention and close progress monitoring.

### ***School Psychologist***

School psychologists are uniquely qualified members of school teams that support students' ability to learn and teachers' ability to teach. They apply expertise in mental health, learning and behavior to help children and youth succeed academically, socially, behaviorally and emotionally.

### ***School Counselor***

The school counselor is responsible for school counselors implement a comprehensive school counseling program that promotes and enhances student achievement. Their work is differentiated by attention to developmental stages of student growth, including the needs, tasks and student interests related to those stages.

### ***Behavior Intervention Center Staff***

The staff member assigned to the Behavior Intervention Center is a teaching assistant. In elementary and high schools this staff member supervises the BIC and ISS. This staff member is responsible for making sure the student visit is documented and that the student receives the appropriate support.

### ***Huntington Family Support Specialists***

The Support Specialists work to increase student success by improving family functioning and decreasing risk, ensuring students have access to needed supports and services both at school and in the community, and increasing parent involvement in their child's education and student engagement in school. The focus is on helping students and families to identify and remove barriers to student success and school engagement.

### ***Hillside Youth Advocate***

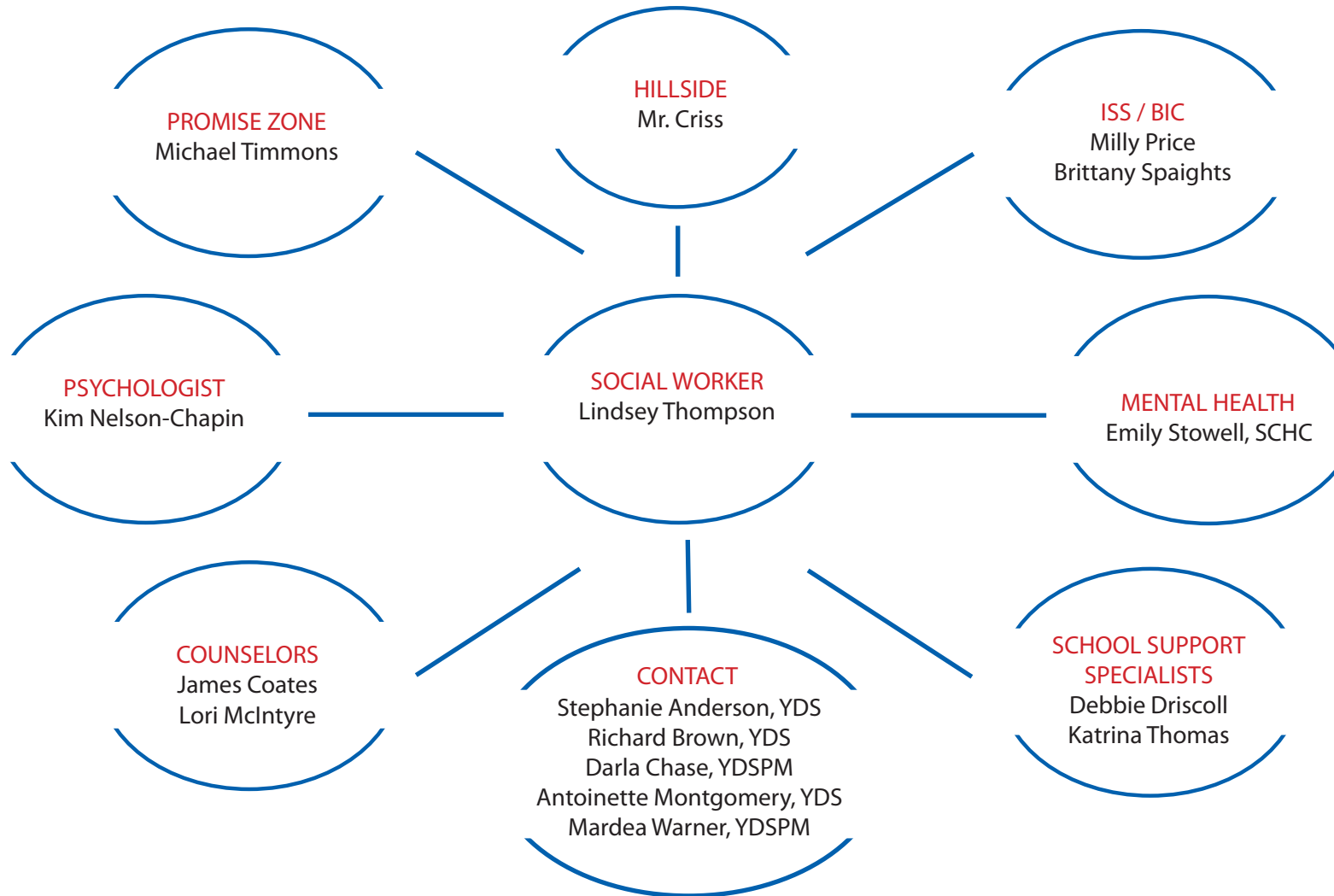
The Hillside Youth Advocates are on-site daily to support students in managing their behavior by setting behavioral expectations, developing individualized behavior plans, providing counseling for students, monitoring student progress through daily reports and working with parents to reinforce behavior expectations at home.

### ***Transition Coach***

A student support team member (counselor, social worker, psychologist, student behavior specialist, youth advocate, youth development specialist, case manager, or SPED collaborative teacher) or teacher volunteer who provides coaching, skill instruction and support to specific students who are returning from a short-term or long-term suspension, alternative program, or juvenile facility or incarceration.

# Organization of Student Support Services

## Grant Middle School



The School Social Workers lead a team of multiple partners committed to meeting the needs of the students through supports and interventions. For information about these services or to discuss your student, please call the School Social Worker at 435-4433.

## ***Roles of Support Staff in Buildings***

### ***Lead Social Worker***

A designated social worker who coordinates all support staff, both internal and external, and leads the work of ensuring that all students have equitable access to services and interventions that they need. The Lead Social Worker will also facilitate the intervention team in this work.

### ***Promise Zone Specialist***

The Promise Zone Specialist assists in identifying youth and delivering interventions to increase school functionality and supports students' school functionality through the use of interventions such as collaborative problem-solving and restorative conferencing.

### ***Student Assistance Counselors***

Contact Community Services provides this school-based counseling program based on Project SUCCESS and using mental health professionals to assist youth and their families with counseling, education, consultation and referral services.

### ***Mental Health Clinicians***

Presently there are 23 Mental Health Clinic Satellites with a staff of 47 whose mission is to match students' emotional and behavioral needs with effective interventions.

### ***DASA Coordinator and DASA Coach***

A school administrator serves as the DASA (Dignity for All Students Act) Coordinator to investigate and process all reported bullying and harassment incidents. The DASA coach is a student support team member who ensures that all DASA prevention activities and DASA student interventions are delivered in a timely manner.

### ***Student Support Coach***

A student support team member (counselor, social worker, psychologist, student behavior specialist, youth advocate, youth development specialist, case manager or SPED collaborative teacher) or teacher volunteer who provides coaching, skill instruction and support to specific students who need an on-going intervention and close progress monitoring.

### ***School Psychologist***

School psychologists are uniquely qualified members of school teams that support students' ability to learn and teachers' ability to teach. They apply expertise in mental health, learning and behavior to help children and youth succeed academically, socially, behaviorally and emotionally.

### ***School Counselor***

The school counselor is responsible for school counselors implement a comprehensive school counseling program that promotes and enhances student achievement. Their work is differentiated by attention to developmental stages of student growth, including the needs, tasks and student interests related to those stages.

### ***Behavior Intervention Center Staff***

The staff member assigned to the Behavior Intervention Center is a teaching assistant. In elementary and high schools this staff member supervises the BIC and ISS. This staff member is responsible for making sure the student visit is documented and that the student receives the appropriate support.

### ***Huntington Family Support Specialists***

The Support Specialists work to increase student success by improving family functioning and decreasing risk, ensuring students have access to needed supports and services both at school and in the community, and increasing parent involvement in their child's education and student engagement in school. The focus is on helping students and families to identify and remove barriers to student success and school engagement.

### ***Hillside Youth Advocate***

The Hillside Youth Advocates are on-site daily to support students in managing their behavior by setting behavioral expectations, developing individualized behavior plans, providing counseling for students, monitoring student progress through daily reports and working with parents to reinforce behavior expectations at home.

### ***Transition Coach***

A student support team member (counselor, social worker, psychologist, student behavior specialist, youth advocate, youth development specialist, case manager, or SPED collaborative teacher) or teacher volunteer who provides coaching, skill instruction and support to specific students who are returning from a short-term or long-term suspension, alternative program, or juvenile facility or incarceration.

# Organization of Student Support Services

## Henninger High School



The School Social Workers lead a team of multiple partners committed to meeting the needs of the students through supports and interventions. For information about these services or to discuss your student, please call the School Social Worker at 435-4343.

## ***Roles of Support Staff in Buildings***

### ***Lead Social Worker***

A designated social worker who coordinates all support staff, both internal and external, and leads the work of ensuring that all students have equitable access to services and interventions that they need. The Lead Social Worker will also facilitate the intervention team in this work.

### ***Promise Zone Specialist***

The Promise Zone Specialist assists in identifying youth and delivering interventions to increase school functionality and supports students' school functionality through the use of interventions such as collaborative problem-solving and restorative conferencing.

### ***Student Assistance Counselors***

Contact Community Services provides this school-based counseling program based on Project SUCCESS and using mental health professionals to assist youth and their families with counseling, education, consultation and referral services.

### ***Mental Health Clinicians***

Presently there are 23 Mental Health Clinic Satellites with a staff of 47 whose mission is to match students' emotional and behavioral needs with effective interventions.

### ***DASA Coordinator and DASA Coach***

A school administrator serves as the DASA (Dignity for All Students Act) Coordinator to investigate and process all reported bullying and harassment incidents. The DASA coach is a student support team member who ensures that all DASA prevention activities and DASA student interventions are delivered in a timely manner.

### ***Student Support Coach***

A student support team member (counselor, social worker, psychologist, student behavior specialist, youth advocate, youth development specialist, case manager or SPED collaborative teacher) or teacher volunteer who provides coaching, skill instruction and support to specific students who need an on-going intervention and close progress monitoring.

### ***School Psychologist***

School psychologists are uniquely qualified members of school teams that support students' ability to learn and teachers' ability to teach. They apply expertise in mental health, learning and behavior to help children and youth succeed academically, socially, behaviorally and emotionally.

### ***School Counselor***

The school counselor is responsible for school counselors implement a comprehensive school counseling program that promotes and enhances student achievement. Their work is differentiated by attention to developmental stages of student growth, including the needs, tasks and student interests related to those stages.

### ***Behavior Intervention Center Staff***

The staff member assigned to the Behavior Intervention Center is a teaching assistant. In elementary and high schools this staff member supervises the BIC and ISS. This staff member is responsible for making sure the student visit is documented and that the student receives the appropriate support.

### ***Huntington Family Support Specialists***

The Support Specialists work to increase student success by improving family functioning and decreasing risk, ensuring students have access to needed supports and services both at school and in the community, and increasing parent involvement in their child's education and student engagement in school. The focus is on helping students and families to identify and remove barriers to student success and school engagement.

### ***Hillside Youth Advocate***

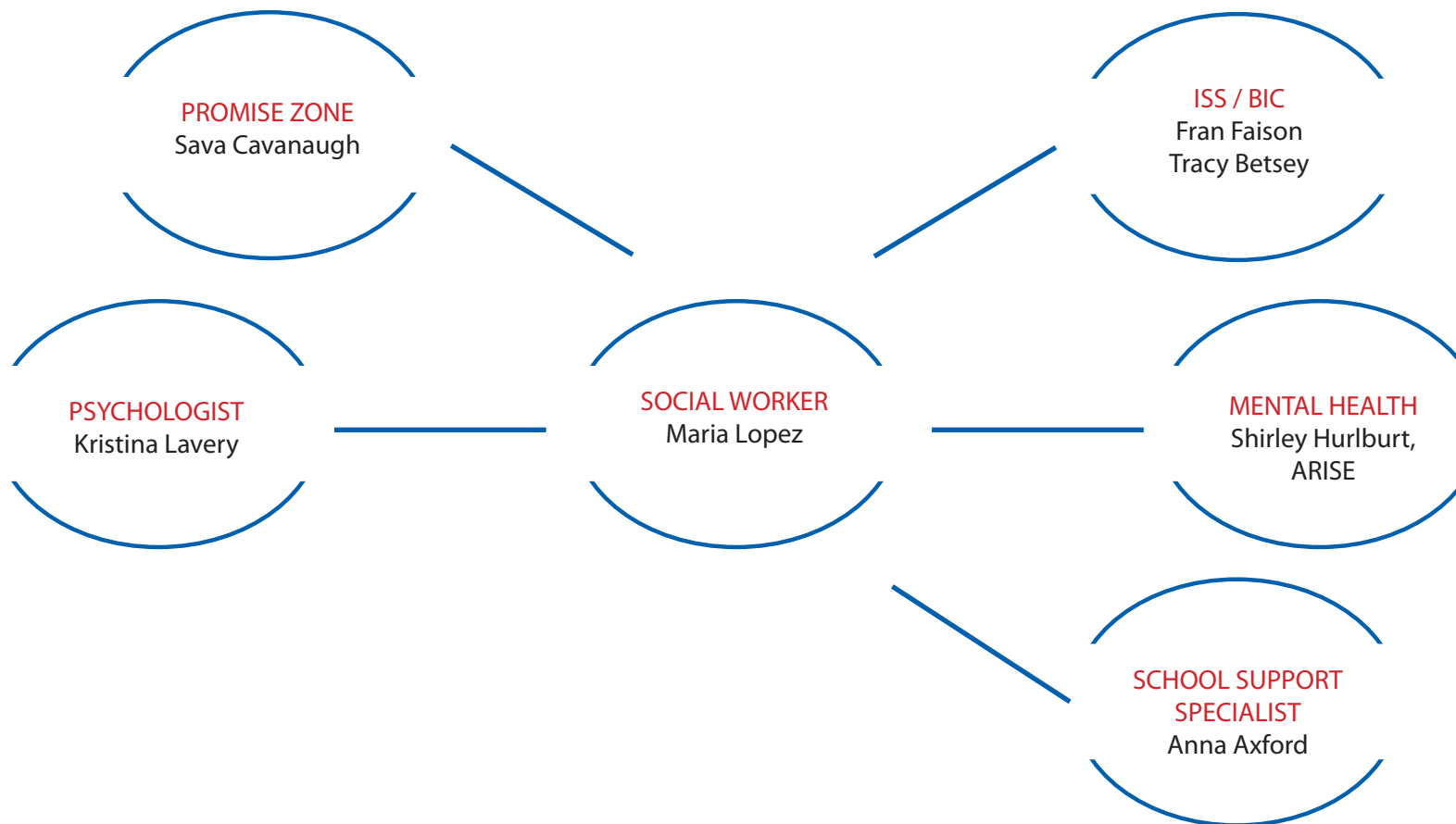
The Hillside Youth Advocates are on-site daily to support students in managing their behavior by setting behavioral expectations, developing individualized behavior plans, providing counseling for students, monitoring student progress through daily reports and working with parents to reinforce behavior expectations at home.

### ***Transition Coach***

A student support team member (counselor, social worker, psychologist, student behavior specialist, youth advocate, youth development specialist, case manager, or SPED collaborative teacher) or teacher volunteer who provides coaching, skill instruction and support to specific students who are returning from a short-term or long-term suspension, alternative program, or juvenile facility or incarceration.

# Organization of Student Support Services

## Hughes Elementary School / Syracuse Latin



The School Social Workers lead a team of multiple partners committed to meeting the needs of the students through supports and interventions. For information about these services or to discuss your student, please call the School Social Worker at 435-4404.

## **Roles of Support Staff in Buildings**

### **Lead Social Worker**

A designated social worker who coordinates all support staff, both internal and external, and leads the work of ensuring that all students have equitable access to services and interventions that they need. The Lead Social Worker will also facilitate the intervention team in this work.

### **Promise Zone Specialist**

The Promise Zone Specialist assists in identifying youth and delivering interventions to increase school functionality and supports students' school functionality through the use of interventions such as collaborative problem-solving and restorative conferencing.

### **Student Assistance Counselors**

Contact Community Services provides this school-based counseling program based on Project SUCCESS and using mental health professionals to assist youth and their families with counseling, education, consultation and referral services.

### **Mental Health Clinicians**

Presently there are 23 Mental Health Clinic Satellites with a staff of 47 whose mission is to match students' emotional and behavioral needs with effective interventions.

### **DASA Coordinator and DASA Coach**

A school administrator serves as the DASA (Dignity for All Students Act) Coordinator to investigate and process all reported bullying and harassment incidents. The DASA coach is a student support team member who ensures that all DASA prevention activities and DASA student interventions are delivered in a timely manner.

### **Student Support Coach**

A student support team member (counselor, social worker, psychologist, student behavior specialist, youth advocate, youth development specialist, case manager or SPED collaborative teacher) or teacher volunteer who provides coaching, skill instruction and support to specific students who need an on-going intervention and close progress monitoring.

### **School Psychologist**

School psychologists are uniquely qualified members of school teams that support students' ability to learn and teachers' ability to teach. They apply expertise in mental health, learning and behavior to help children and youth succeed academically, socially, behaviorally and emotionally.

### **School Counselor**

The school counselor is responsible for school counselors implement a comprehensive school counseling program that promotes and enhances student achievement. Their work is differentiated by attention to developmental stages of student growth, including the needs, tasks and student interests related to those stages.

### **Behavior Intervention Center Staff**

The staff member assigned to the Behavior Intervention Center is a teaching assistant. In elementary and high schools this staff member supervises the BIC and ISS. This staff member is responsible for making sure the student visit is documented and that the student receives the appropriate support.

### **Huntington Family Support Specialists**

The Support Specialists work to increase student success by improving family functioning and decreasing risk, ensuring students have access to needed supports and services both at school and in the community, and increasing parent involvement in their child's education and student engagement in school. The focus is on helping students and families to identify and remove barriers to student success and school engagement.

### **Hillside Youth Advocate**

The Hillside Youth Advocates are on-site daily to support students in managing their behavior by setting behavioral expectations, developing individualized behavior plans, providing counseling for students, monitoring student progress through daily reports and working with parents to reinforce behavior expectations at home.

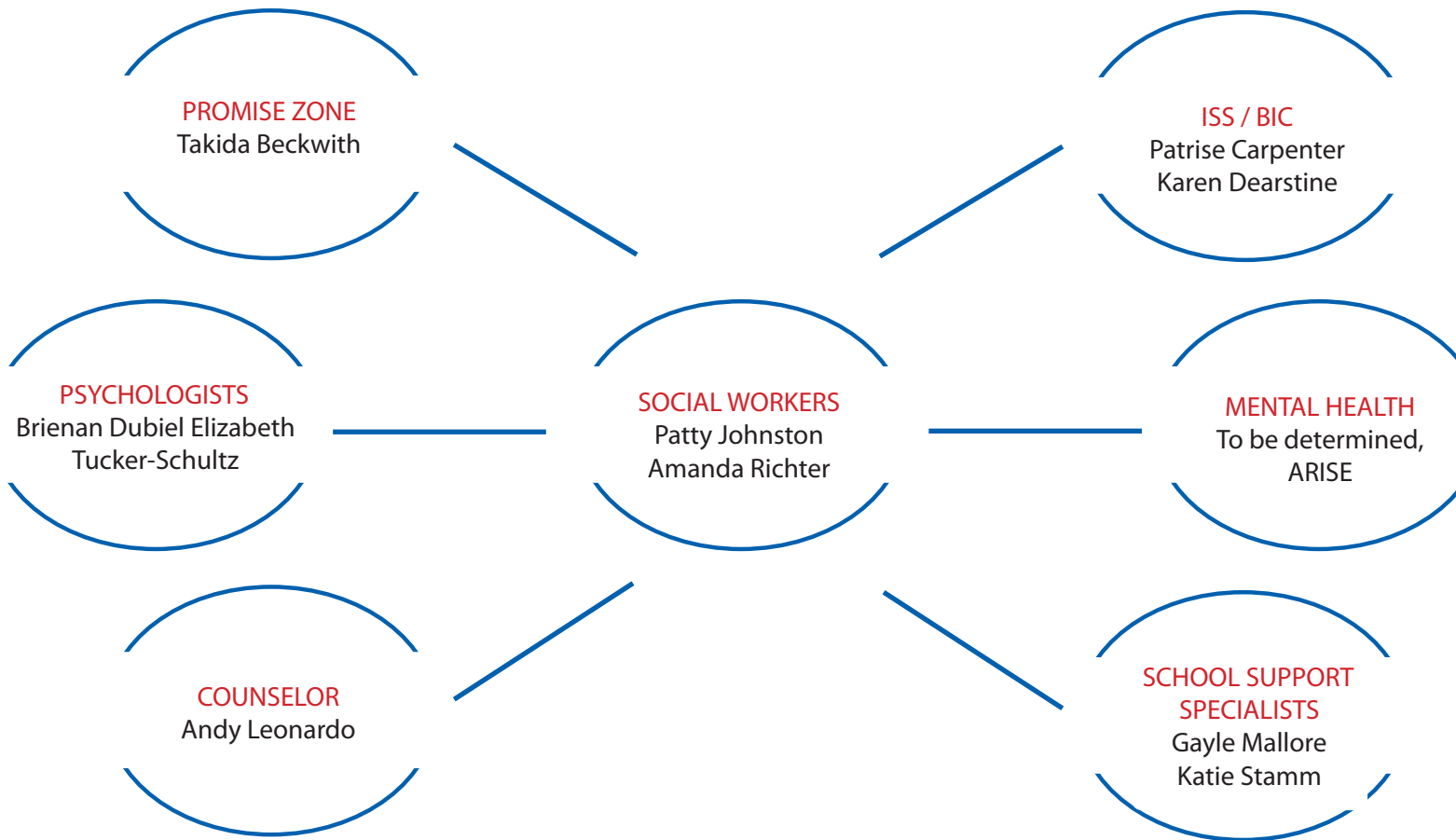
### **Transition Coach**

A student support team member (counselor, social worker, psychologist, student behavior specialist, youth advocate, youth development specialist, case manager, or SPED collaborative teacher) or teacher volunteer who provides coaching, skill instruction and support to specific students who are returning from a short-term or long-term suspension, alternative program, or juvenile facility or incarceration.



# Organization of Student Support Services

## Huntington Pre-K – 8 School



The School Social Workers lead a team of multiple partners committed to meeting the needs of the students through supports and interventions. For information about these services or to discuss your student, please call the School Social Worker at 435-4565.

## **Roles of Support Staff in Buildings**

### **Lead Social Worker**

A designated social worker who coordinates all support staff, both internal and external, and leads the work of ensuring that all students have equitable access to services and interventions that they need. The Lead Social Worker will also facilitate the intervention team in this work.

### **Promise Zone Specialist**

The Promise Zone Specialist assists in identifying youth and delivering interventions to increase school functionality and supports students' school functionality through the use of interventions such as collaborative problem-solving and restorative conferencing.

### **Student Assistance Counselors**

Contact Community Services provides this school-based counseling program based on Project SUCCESS and using mental health professionals to assist youth and their families with counseling, education, consultation and referral services.

### **Mental Health Clinicians**

Presently there are 23 Mental Health Clinic Satellites with a staff of 47 whose mission is to match students' emotional and behavioral needs with effective interventions.

### **DASA Coordinator and DASA Coach**

A school administrator serves as the DASA (Dignity for All Students Act) Coordinator to investigate and process all reported bullying and harassment incidents. The DASA coach is a student support team member who ensures that all DASA prevention activities and DASA student interventions are delivered in a timely manner.

### **Student Support Coach**

A student support team member (counselor, social worker, psychologist, student behavior specialist, youth advocate, youth development specialist, case manager or SPED collaborative teacher) or teacher volunteer who provides coaching, skill instruction and support to specific students who need an on-going intervention and close progress monitoring.

### **School Psychologist**

School psychologists are uniquely qualified members of school teams that support students' ability to learn and teachers' ability to teach. They apply expertise in mental health, learning and behavior to help children and youth succeed academically, socially, behaviorally and emotionally.

### **School Counselor**

The school counselor is responsible for school counselors implement a comprehensive school counseling program that promotes and enhances student achievement. Their work is differentiated by attention to developmental stages of student growth, including the needs, tasks and student interests related to those stages.

### **Behavior Intervention Center Staff**

The staff member assigned to the Behavior Intervention Center is a teaching assistant. In elementary and high schools this staff member supervises the BIC and ISS. This staff member is responsible for making sure the student visit is documented and that the student receives the appropriate support.

### **Huntington Family Support Specialists**

The Support Specialists work to increase student success by improving family functioning and decreasing risk, ensuring students have access to needed supports and services both at school and in the community, and increasing parent involvement in their child's education and student engagement in school. The focus is on helping students and families to identify and remove barriers to student success and school engagement.

### **Hillside Youth Advocate**

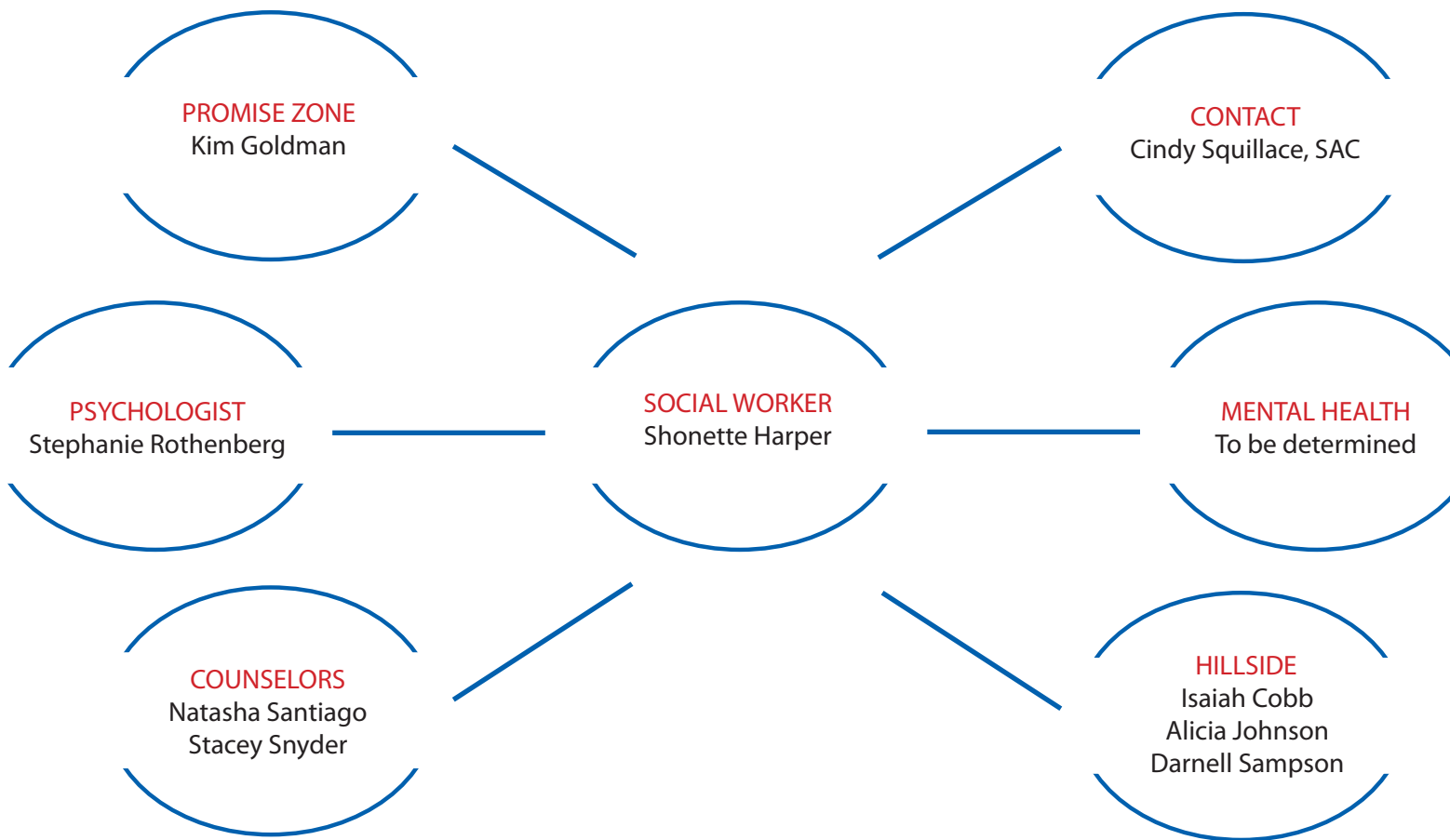
The Hillside Youth Advocates are on-site daily to support students in managing their behavior by setting behavioral expectations, developing individualized behavior plans, providing counseling for students, monitoring student progress through daily reports and working with parents to reinforce behavior expectations at home.

### **Transition Coach**

A student support team member (counselor, social worker, psychologist, student behavior specialist, youth advocate, youth development specialist, case manager, or SPED collaborative teacher) or teacher volunteer who provides coaching, skill instruction and support to specific students who are returning from a short-term or long-term suspension, alternative program, or juvenile facility or incarceration.

# Organization of Student Support Services

## Institute of Technology at Syracuse Central (ITC)



The School Social Workers lead a team of multiple partners committed to meeting the needs of the students through supports and interventions. For information about these services or to discuss your student, please call the School Social Worker at 435-4300.

## **Roles of Support Staff in Buildings**

### **Lead Social Worker**

A designated social worker who coordinates all support staff, both internal and external, and leads the work of ensuring that all students have equitable access to services and interventions that they need. The Lead Social Worker will also facilitate the intervention team in this work.

### **Promise Zone Specialist**

The Promise Zone Specialist assists in identifying youth and delivering interventions to increase school functionality and supports students' school functionality through the use of interventions such as collaborative problem-solving and restorative conferencing.

### **Student Assistance Counselors**

Contact Community Services provides this school-based counseling program based on Project SUCCESS and using mental health professionals to assist youth and their families with counseling, education, consultation and referral services.

### **Mental Health Clinicians**

Presently there are 23 Mental Health Clinic Satellites with a staff of 47 whose mission is to match students' emotional and behavioral needs with effective interventions.

### **DASA Coordinator and DASA Coach**

A school administrator serves as the DASA (Dignity for All Students Act) Coordinator to investigate and process all reported bullying and harassment incidents. The DASA coach is a student support team member who ensures that all DASA prevention activities and DASA student interventions are delivered in a timely manner.

### **Student Support Coach**

A student support team member (counselor, social worker, psychologist, student behavior specialist, youth advocate, youth development specialist, case manager or SPED collaborative teacher) or teacher volunteer who provides coaching, skill instruction and support to specific students who need an on-going intervention and close progress monitoring.

### **School Psychologist**

School psychologists are uniquely qualified members of school teams that support students' ability to learn and teachers' ability to teach. They apply expertise in mental health, learning and behavior to help children and youth succeed academically, socially, behaviorally and emotionally.

### **School Counselor**

The school counselor is responsible for school counselors implement a comprehensive school counseling program that promotes and enhances student achievement. Their work is differentiated by attention to developmental stages of student growth, including the needs, tasks and student interests related to those stages.

### **Behavior Intervention Center Staff**

The staff member assigned to the Behavior Intervention Center is a teaching assistant. In elementary and high schools this staff member supervises the BIC and ISS. This staff member is responsible for making sure the student visit is documented and that the student receives the appropriate support.

### **Huntington Family Support Specialists**

The Support Specialists work to increase student success by improving family functioning and decreasing risk, ensuring students have access to needed supports and services both at school and in the community, and increasing parent involvement in their child's education and student engagement in school. The focus is on helping students and families to identify and remove barriers to student success and school engagement.

### **Hillside Youth Advocate**

The Hillside Youth Advocates are on-site daily to support students in managing their behavior by setting behavioral expectations, developing individualized behavior plans, providing counseling for students, monitoring student progress through daily reports and working with parents to reinforce behavior expectations at home.

### **Transition Coach**

A student support team member (counselor, social worker, psychologist, student behavior specialist, youth advocate, youth development specialist, case manager, or SPED collaborative teacher) or teacher volunteer who provides coaching, skill instruction and support to specific students who are returning from a short-term or long-term suspension, alternative program, or juvenile facility or incarceration.

# Organization of Student Support Services

## Johnson Center



The School Social Workers lead a team of multiple partners committed to meeting the needs of the students through supports and interventions. For information about these services or to discuss your student, please call the School Social Worker at 435-4135.

## **Roles of Support Staff in Buildings**

### **Lead Social Worker**

A designated social worker who coordinates all support staff, both internal and external, and leads the work of ensuring that all students have equitable access to services and interventions that they need. The Lead Social Worker will also facilitate the intervention team in this work.

### **Promise Zone Specialist**

The Promise Zone Specialist assists in identifying youth and delivering interventions to increase school functionality and supports students' school functionality through the use of interventions such as collaborative problem-solving and restorative conferencing.

### **Student Assistance Counselors**

Contact Community Services provides this school-based counseling program based on Project SUCCESS and using mental health professionals to assist youth and their families with counseling, education, consultation and referral services.

### **Mental Health Clinicians**

Presently there are 23 Mental Health Clinic Satellites with a staff of 47 whose mission is to match students' emotional and behavioral needs with effective interventions.

### **DASA Coordinator and DASA Coach**

A school administrator serves as the DASA (Dignity for All Students Act) Coordinator to investigate and process all reported bullying and harassment incidents. The DASA coach is a student support team member who ensures that all DASA prevention activities and DASA student interventions are delivered in a timely manner.

### **Student Support Coach**

A student support team member (counselor, social worker, psychologist, student behavior specialist, youth advocate, youth development specialist, case manager or SPED collaborative teacher) or teacher volunteer who provides coaching, skill instruction and support to specific students who need an on-going intervention and close progress monitoring.

### **School Psychologist**

School psychologists are uniquely qualified members of school teams that support students' ability to learn and teachers' ability to teach. They apply expertise in mental health, learning and behavior to help children and youth succeed academically, socially, behaviorally and emotionally.

### **School Counselor**

The school counselor is responsible for school counselors implement a comprehensive school counseling program that promotes and enhances student achievement. Their work is differentiated by attention to developmental stages of student growth, including the needs, tasks and student interests related to those stages.

### **Behavior Intervention Center Staff**

The staff member assigned to the Behavior Intervention Center is a teaching assistant. In elementary and high schools this staff member supervises the BIC and ISS. This staff member is responsible for making sure the student visit is documented and that the student receives the appropriate support.

### **Huntington Family Support Specialists**

The Support Specialists work to increase student success by improving family functioning and decreasing risk, ensuring students have access to needed supports and services both at school and in the community, and increasing parent involvement in their child's education and student engagement in school. The focus is on helping students and families to identify and remove barriers to student success and school engagement.

### **Hillside Youth Advocate**

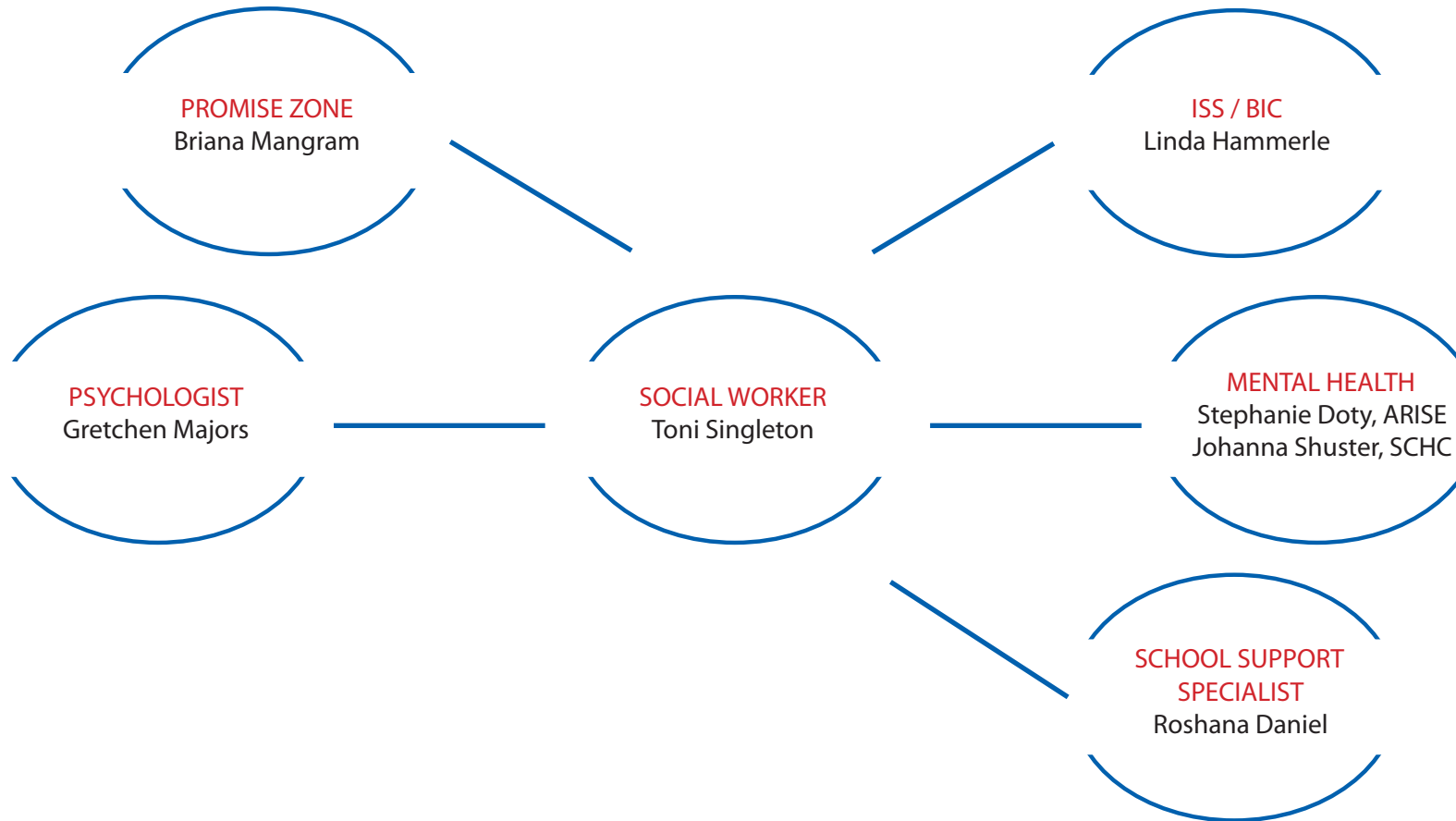
The Hillside Youth Advocates are on-site daily to support students in managing their behavior by setting behavioral expectations, developing individualized behavior plans, providing counseling for students, monitoring student progress through daily reports and working with parents to reinforce behavior expectations at home.

### **Transition Coach**

A student support team member (counselor, social worker, psychologist, student behavior specialist, youth advocate, youth development specialist, case manager, or SPED collaborative teacher) or teacher volunteer who provides coaching, skill instruction and support to specific students who are returning from a short-term or long-term suspension, alternative program, or juvenile facility or incarceration.

# Organization of Student Support Services

## Dr. King Elementary School



The School Social Workers lead a team of multiple partners committed to meeting the needs of the students through supports and interventions. For information about these services or to discuss your student, please call the School Social Worker at 435-4580.

## **Roles of Support Staff in Buildings**

### **Lead Social Worker**

A designated social worker who coordinates all support staff, both internal and external, and leads the work of ensuring that all students have equitable access to services and interventions that they need. The Lead Social Worker will also facilitate the intervention team in this work.

### **Promise Zone Specialist**

The Promise Zone Specialist assists in identifying youth and delivering interventions to increase school functionality and supports students' school functionality through the use of interventions such as collaborative problem-solving and restorative conferencing.

### **Student Assistance Counselors**

Contact Community Services provides this school-based counseling program based on Project SUCCESS and using mental health professionals to assist youth and their families with counseling, education, consultation and referral services.

### **Mental Health Clinicians**

Presently there are 23 Mental Health Clinic Satellites with a staff of 47 whose mission is to match students' emotional and behavioral needs with effective interventions.

### **DASA Coordinator and DASA Coach**

A school administrator serves as the DASA (Dignity for All Students Act) Coordinator to investigate and process all reported bullying and harassment incidents. The DASA coach is a student support team member who ensures that all DASA prevention activities and DASA student interventions are delivered in a timely manner.

### **Student Support Coach**

A student support team member (counselor, social worker, psychologist, student behavior specialist, youth advocate, youth development specialist, case manager or SPED collaborative teacher) or teacher volunteer who provides coaching, skill instruction and support to specific students who need an on-going intervention and close progress monitoring.

### **School Psychologist**

School psychologists are uniquely qualified members of school teams that support students' ability to learn and teachers' ability to teach. They apply expertise in mental health, learning and behavior to help children and youth succeed academically, socially, behaviorally and emotionally.

### **School Counselor**

The school counselor is responsible for school counselors implement a comprehensive school counseling program that promotes and enhances student achievement. Their work is differentiated by attention to developmental stages of student growth, including the needs, tasks and student interests related to those stages.

### **Behavior Intervention Center Staff**

The staff member assigned to the Behavior Intervention Center is a teaching assistant. In elementary and high schools this staff member supervises the BIC and ISS. This staff member is responsible for making sure the student visit is documented and that the student receives the appropriate support.

### **Huntington Family Support Specialists**

The Support Specialists work to increase student success by improving family functioning and decreasing risk, ensuring students have access to needed supports and services both at school and in the community, and increasing parent involvement in their child's education and student engagement in school. The focus is on helping students and families to identify and remove barriers to student success and school engagement.

### **Hillside Youth Advocate**

The Hillside Youth Advocates are on-site daily to support students in managing their behavior by setting behavioral expectations, developing individualized behavior plans, providing counseling for students, monitoring student progress through daily reports and working with parents to reinforce behavior expectations at home.

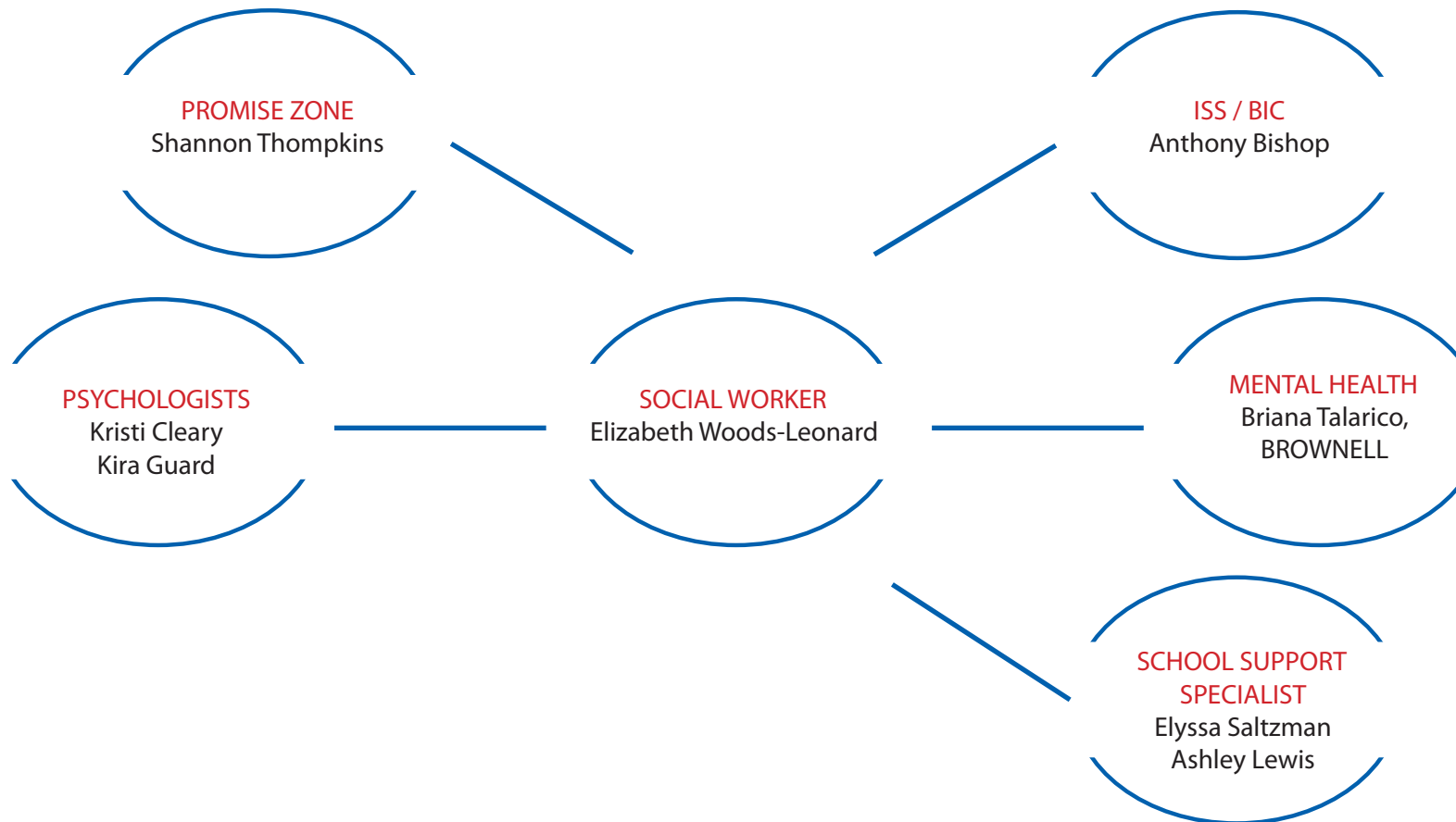
### **Transition Coach**

A student support team member (counselor, social worker, psychologist, student behavior specialist, youth advocate, youth development specialist, case manager, or SPED collaborative teacher) or teacher volunteer who provides coaching, skill instruction and support to specific students who are returning from a short-term or long-term suspension, alternative program, or juvenile facility or incarceration.



# Organization of Student Support Services

## LeMoyne Elementary School



The School Social Workers lead a team of multiple partners committed to meeting the needs of the students through supports and interventions. For information about these services or to discuss your student, please call the School Social Worker at 435-4590.

## **Roles of Support Staff in Buildings**

### **Lead Social Worker**

A designated social worker who coordinates all support staff, both internal and external, and leads the work of ensuring that all students have equitable access to services and interventions that they need. The Lead Social Worker will also facilitate the intervention team in this work.

### **Promise Zone Specialist**

The Promise Zone Specialist assists in identifying youth and delivering interventions to increase school functionality and supports students' school functionality through the use of interventions such as collaborative problem-solving and restorative conferencing.

### **Student Assistance Counselors**

Contact Community Services provides this school-based counseling program based on Project SUCCESS and using mental health professionals to assist youth and their families with counseling, education, consultation and referral services.

### **Mental Health Clinicians**

Presently there are 23 Mental Health Clinic Satellites with a staff of 47 whose mission is to match students' emotional and behavioral needs with effective interventions.

### **DASA Coordinator and DASA Coach**

A school administrator serves as the DASA (Dignity for All Students Act) Coordinator to investigate and process all reported bullying and harassment incidents. The DASA coach is a student support team member who ensures that all DASA prevention activities and DASA student interventions are delivered in a timely manner.

### **Student Support Coach**

A student support team member (counselor, social worker, psychologist, student behavior specialist, youth advocate, youth development specialist, case manager or SPED collaborative teacher) or teacher volunteer who provides coaching, skill instruction and support to specific students who need an on-going intervention and close progress monitoring.

### **School Psychologist**

School psychologists are uniquely qualified members of school teams that support students' ability to learn and teachers' ability to teach. They apply expertise in mental health, learning and behavior to help children and youth succeed academically, socially, behaviorally and emotionally.

### **School Counselor**

The school counselor is responsible for school counselors implement a comprehensive school counseling program that promotes and enhances student achievement. Their work is differentiated by attention to developmental stages of student growth, including the needs, tasks and student interests related to those stages.

### **Behavior Intervention Center Staff**

The staff member assigned to the Behavior Intervention Center is a teaching assistant. In elementary and high schools this staff member supervises the BIC and ISS. This staff member is responsible for making sure the student visit is documented and that the student receives the appropriate support.

### **Huntington Family Support Specialists**

The Support Specialists work to increase student success by improving family functioning and decreasing risk, ensuring students have access to needed supports and services both at school and in the community, and increasing parent involvement in their child's education and student engagement in school. The focus is on helping students and families to identify and remove barriers to student success and school engagement.

### **Hillside Youth Advocate**

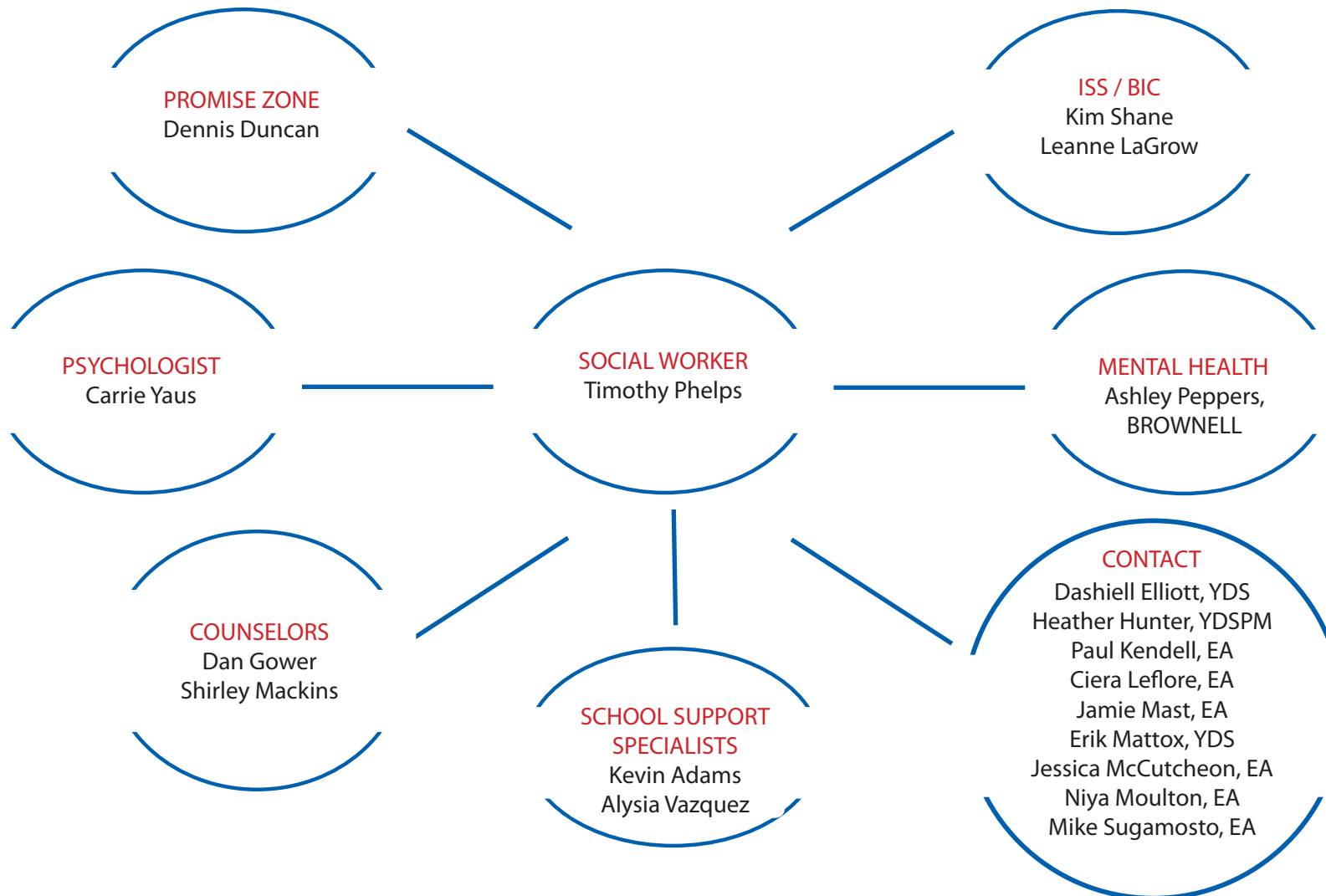
The Hillside Youth Advocates are on-site daily to support students in managing their behavior by setting behavioral expectations, developing individualized behavior plans, providing counseling for students, monitoring student progress through daily reports and working with parents to reinforce behavior expectations at home.

### **Transition Coach**

A student support team member (counselor, social worker, psychologist, student behavior specialist, youth advocate, youth development specialist, case manager, or SPED collaborative teacher) or teacher volunteer who provides coaching, skill instruction and support to specific students who are returning from a short-term or long-term suspension, alternative program, or juvenile facility or incarceration.

# Organization of Student Support Services

## Lincoln Middle School



The School Social Workers lead a team of multiple partners committed to meeting the needs of the students through supports and interventions. For information about these services or to discuss your student, please call the School Social Worker at 435-4108.

## ***Roles of Support Staff in Buildings***

### ***Lead Social Worker***

A designated social worker who coordinates all support staff, both internal and external, and leads the work of ensuring that all students have equitable access to services and interventions that they need. The Lead Social Worker will also facilitate the intervention team in this work.

### ***Promise Zone Specialist***

The Promise Zone Specialist assists in identifying youth and delivering interventions to increase school functionality and supports students' school functionality through the use of interventions such as collaborative problem-solving and restorative conferencing.

### ***Student Assistance Counselors***

Contact Community Services provides this school-based counseling program based on Project SUCCESS and using mental health professionals to assist youth and their families with counseling, education, consultation and referral services.

### ***Mental Health Clinicians***

Presently there are 23 Mental Health Clinic Satellites with a staff of 47 whose mission is to match students' emotional and behavioral needs with effective interventions.

### ***DASA Coordinator and DASA Coach***

A school administrator serves as the DASA (Dignity for All Students Act) Coordinator to investigate and process all reported bullying and harassment incidents. The DASA coach is a student support team member who ensures that all DASA prevention activities and DASA student interventions are delivered in a timely manner.

### ***Student Support Coach***

A student support team member (counselor, social worker, psychologist, student behavior specialist, youth advocate, youth development specialist, case manager or SPED collaborative teacher) or teacher volunteer who provides coaching, skill instruction and support to specific students who need an on-going intervention and close progress monitoring.

### ***School Psychologist***

School psychologists are uniquely qualified members of school teams that support students' ability to learn and teachers' ability to teach. They apply expertise in mental health, learning and behavior to help children and youth succeed academically, socially, behaviorally and emotionally.

### ***School Counselor***

The school counselor is responsible for school counselors implement a comprehensive school counseling program that promotes and enhances student achievement. Their work is differentiated by attention to developmental stages of student growth, including the needs, tasks and student interests related to those stages.

### ***Behavior Intervention Center Staff***

The staff member assigned to the Behavior Intervention Center is a teaching assistant. In elementary and high schools this staff member supervises the BIC and ISS. This staff member is responsible for making sure the student visit is documented and that the student receives the appropriate support.

### ***Huntington Family Support Specialists***

The Support Specialists work to increase student success by improving family functioning and decreasing risk, ensuring students have access to needed supports and services both at school and in the community, and increasing parent involvement in their child's education and student engagement in school. The focus is on helping students and families to identify and remove barriers to student success and school engagement.

### ***Hillside Youth Advocate***

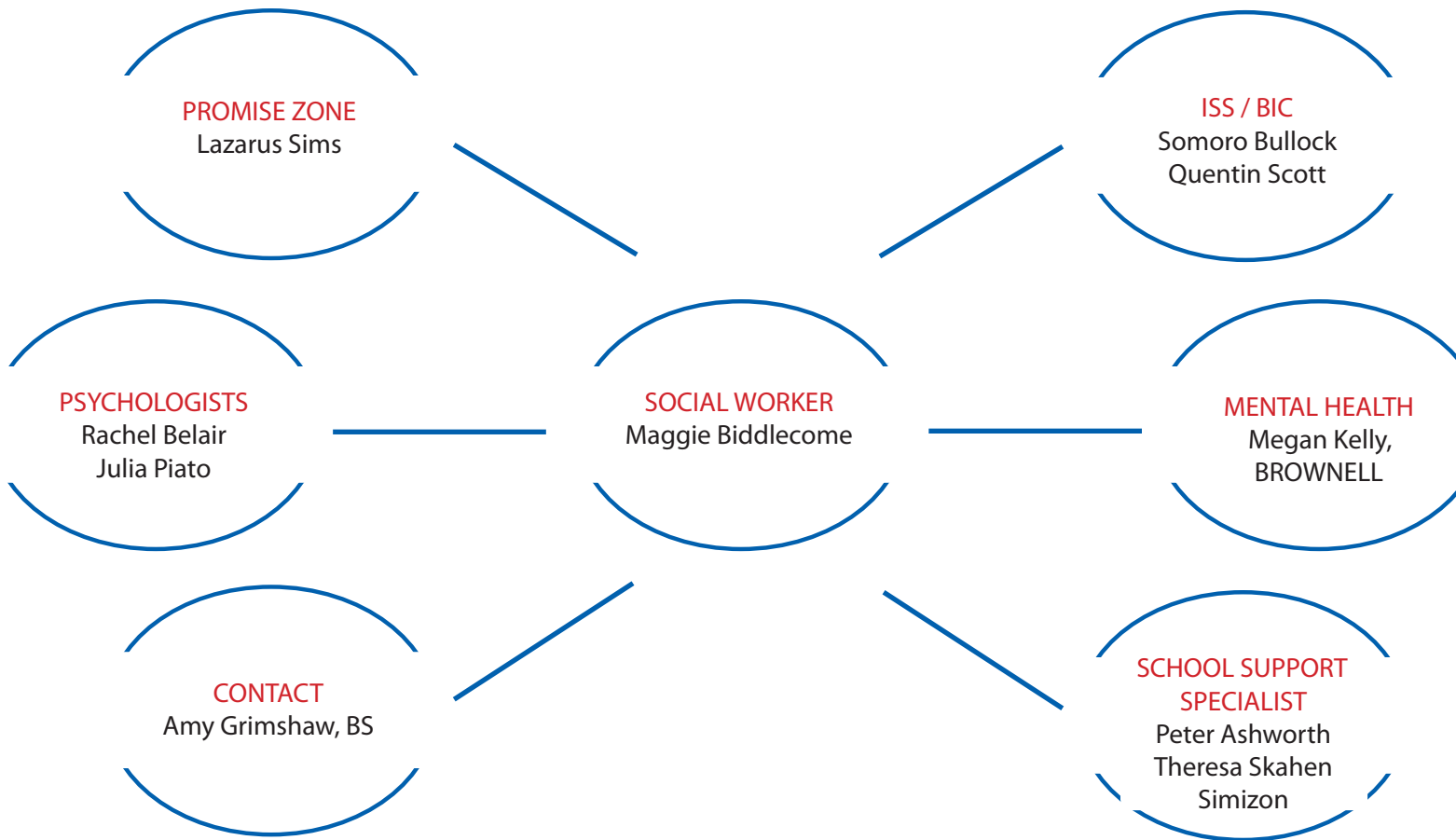
The Hillside Youth Advocates are on-site daily to support students in managing their behavior by setting behavioral expectations, developing individualized behavior plans, providing counseling for students, monitoring student progress through daily reports and working with parents to reinforce behavior expectations at home.

### ***Transition Coach***

A student support team member (counselor, social worker, psychologist, student behavior specialist, youth advocate, youth development specialist, case manager, or SPED collaborative teacher) or teacher volunteer who provides coaching, skill instruction and support to specific students who are returning from a short-term or long-term suspension, alternative program, or juvenile facility or incarceration.

# Organization of Student Support Services

## McKinley-Brighton Elementary School



The School Social Workers lead a team of multiple partners committed to meeting the needs of the students through supports and interventions. For information about these services or to discuss your student, please call the School Social Worker at 435-4605.

## **Roles of Support Staff in Buildings**

### **Lead Social Worker**

A designated social worker who coordinates all support staff, both internal and external, and leads the work of ensuring that all students have equitable access to services and interventions that they need. The Lead Social Worker will also facilitate the intervention team in this work.

### **Promise Zone Specialist**

The Promise Zone Specialist assists in identifying youth and delivering interventions to increase school functionality and supports students' school functionality through the use of interventions such as collaborative problem-solving and restorative conferencing.

### **Student Assistance Counselors**

Contact Community Services provides this school-based counseling program based on Project SUCCESS and using mental health professionals to assist youth and their families with counseling, education, consultation and referral services.

### **Mental Health Clinicians**

Presently there are 23 Mental Health Clinic Satellites with a staff of 47 whose mission is to match students' emotional and behavioral needs with effective interventions.

### **DASA Coordinator and DASA Coach**

A school administrator serves as the DASA (Dignity for All Students Act) Coordinator to investigate and process all reported bullying and harassment incidents. The DASA coach is a student support team member who ensures that all DASA prevention activities and DASA student interventions are delivered in a timely manner.

### **Student Support Coach**

A student support team member (counselor, social worker, psychologist, student behavior specialist, youth advocate, youth development specialist, case manager or SPED collaborative teacher) or teacher volunteer who provides coaching, skill instruction and support to specific students who need an on-going intervention and close progress monitoring.

### **School Psychologist**

School psychologists are uniquely qualified members of school teams that support students' ability to learn and teachers' ability to teach. They apply expertise in mental health, learning and behavior to help children and youth succeed academically, socially, behaviorally and emotionally.

### **School Counselor**

The school counselor is responsible for school counselors implement a comprehensive school counseling program that promotes and enhances student achievement. Their work is differentiated by attention to developmental stages of student growth, including the needs, tasks and student interests related to those stages.

### **Behavior Intervention Center Staff**

The staff member assigned to the Behavior Intervention Center is a teaching assistant. In elementary and high schools this staff member supervises the BIC and ISS. This staff member is responsible for making sure the student visit is documented and that the student receives the appropriate support.

### **Huntington Family Support Specialists**

The Support Specialists work to increase student success by improving family functioning and decreasing risk, ensuring students have access to needed supports and services both at school and in the community, and increasing parent involvement in their child's education and student engagement in school. The focus is on helping students and families to identify and remove barriers to student success and school engagement.

### **Hillside Youth Advocate**

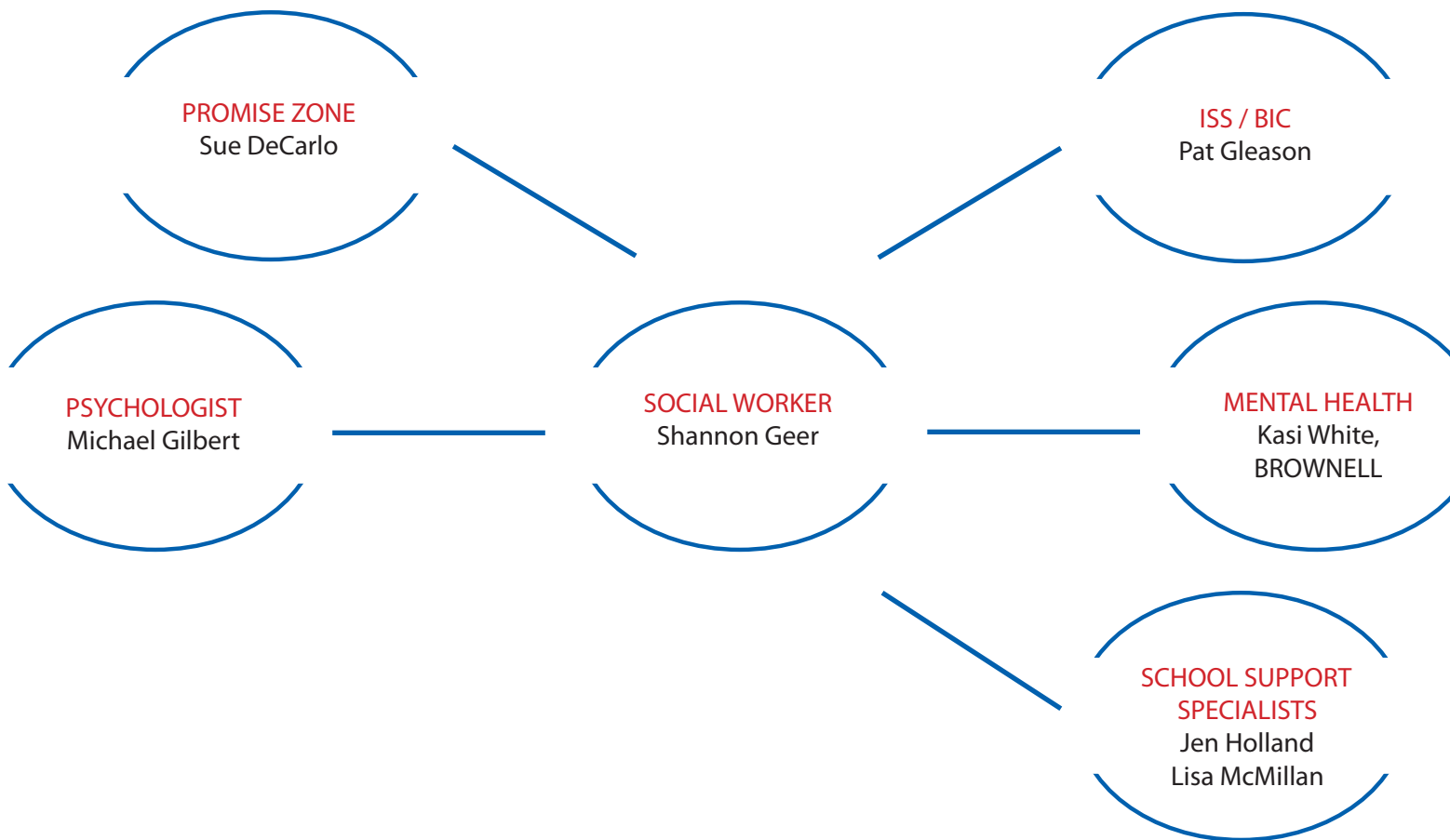
The Hillside Youth Advocates are on-site daily to support students in managing their behavior by setting behavioral expectations, developing individualized behavior plans, providing counseling for students, monitoring student progress through daily reports and working with parents to reinforce behavior expectations at home.

### **Transition Coach**

A student support team member (counselor, social worker, psychologist, student behavior specialist, youth advocate, youth development specialist, case manager, or SPED collaborative teacher) or teacher volunteer who provides coaching, skill instruction and support to specific students who are returning from a short-term or long-term suspension, alternative program, or juvenile facility or incarceration.

# Organization of Student Support Services

## Meachem Elementary School



The School Social Workers lead a team of multiple partners committed to meeting the needs of the students through supports and interventions. For information about these services or to discuss your student, please call the School Social Worker at 435-4610.

## **Roles of Support Staff in Buildings**

### **Lead Social Worker**

A designated social worker who coordinates all support staff, both internal and external, and leads the work of ensuring that all students have equitable access to services and interventions that they need. The Lead Social Worker will also facilitate the intervention team in this work.

### **Promise Zone Specialist**

The Promise Zone Specialist assists in identifying youth and delivering interventions to increase school functionality and supports students' school functionality through the use of interventions such as collaborative problem-solving and restorative conferencing.

### **Student Assistance Counselors**

Contact Community Services provides this school-based counseling program based on Project SUCCESS and using mental health professionals to assist youth and their families with counseling, education, consultation and referral services.

### **Mental Health Clinicians**

Presently there are 23 Mental Health Clinic Satellites with a staff of 47 whose mission is to match students' emotional and behavioral needs with effective interventions.

### **DASA Coordinator and DASA Coach**

A school administrator serves as the DASA (Dignity for All Students Act) Coordinator to investigate and process all reported bullying and harassment incidents. The DASA coach is a student support team member who ensures that all DASA prevention activities and DASA student interventions are delivered in a timely manner.

### **Student Support Coach**

A student support team member (counselor, social worker, psychologist, student behavior specialist, youth advocate, youth development specialist, case manager or SPED collaborative teacher) or teacher volunteer who provides coaching, skill instruction and support to specific students who need an on-going intervention and close progress monitoring.

### **School Psychologist**

School psychologists are uniquely qualified members of school teams that support students' ability to learn and teachers' ability to teach. They apply expertise in mental health, learning and behavior to help children and youth succeed academically, socially, behaviorally and emotionally.

### **School Counselor**

The school counselor is responsible for school counselors implement a comprehensive school counseling program that promotes and enhances student achievement. Their work is differentiated by attention to developmental stages of student growth, including the needs, tasks and student interests related to those stages.

### **Behavior Intervention Center Staff**

The staff member assigned to the Behavior Intervention Center is a teaching assistant. In elementary and high schools this staff member supervises the BIC and ISS. This staff member is responsible for making sure the student visit is documented and that the student receives the appropriate support.

### **Huntington Family Support Specialists**

The Support Specialists work to increase student success by improving family functioning and decreasing risk, ensuring students have access to needed supports and services both at school and in the community, and increasing parent involvement in their child's education and student engagement in school. The focus is on helping students and families to identify and remove barriers to student success and school engagement.

### **Hillside Youth Advocate**

The Hillside Youth Advocates are on-site daily to support students in managing their behavior by setting behavioral expectations, developing individualized behavior plans, providing counseling for students, monitoring student progress through daily reports and working with parents to reinforce behavior expectations at home.

### **Transition Coach**

A student support team member (counselor, social worker, psychologist, student behavior specialist, youth advocate, youth development specialist, case manager, or SPED collaborative teacher) or teacher volunteer who provides coaching, skill instruction and support to specific students who are returning from a short-term or long-term suspension, alternative program, or juvenile facility or incarceration.



# Organization of Student Support Services

## Middle School Alternative Program @ Phoenix Center



The School Social Workers lead a team of multiple partners committed to meeting the needs of the students through supports and interventions. For information about these services or to discuss your student, please call the School Social Worker at 435-6226.

## **Roles of Support Staff in Buildings**

### **Lead Social Worker**

A designated social worker who coordinates all support staff, both internal and external, and leads the work of ensuring that all students have equitable access to services and interventions that they need. The Lead Social Worker will also facilitate the intervention team in this work.

### **Promise Zone Specialist**

The Promise Zone Specialist assists in identifying youth and delivering interventions to increase school functionality and supports students' school functionality through the use of interventions such as collaborative problem-solving and restorative conferencing.

### **Student Assistance Counselors**

Contact Community Services provides this school-based counseling program based on Project SUCCESS and using mental health professionals to assist youth and their families with counseling, education, consultation and referral services.

### **Mental Health Clinicians**

Presently there are 23 Mental Health Clinic Satellites with a staff of 47 whose mission is to match students' emotional and behavioral needs with effective interventions.

### **DASA Coordinator and DASA Coach**

A school administrator serves as the DASA (Dignity for All Students Act) Coordinator to investigate and process all reported bullying and harassment incidents. The DASA coach is a student support team member who ensures that all DASA prevention activities and DASA student interventions are delivered in a timely manner.

### **Student Support Coach**

A student support team member (counselor, social worker, psychologist, student behavior specialist, youth advocate, youth development specialist, case manager or SPED collaborative teacher) or teacher volunteer who provides coaching, skill instruction and support to specific students who need an on-going intervention and close progress monitoring.

### **School Psychologist**

School psychologists are uniquely qualified members of school teams that support students' ability to learn and teachers' ability to teach. They apply expertise in mental health, learning and behavior to help children and youth succeed academically, socially, behaviorally and emotionally.

### **School Counselor**

The school counselor is responsible for school counselors implement a comprehensive school counseling program that promotes and enhances student achievement. Their work is differentiated by attention to developmental stages of student growth, including the needs, tasks and student interests related to those stages.

### **Behavior Intervention Center Staff**

The staff member assigned to the Behavior Intervention Center is a teaching assistant. In elementary and high schools this staff member supervises the BIC and ISS. This staff member is responsible for making sure the student visit is documented and that the student receives the appropriate support.

### **Huntington Family Support Specialists**

The Support Specialists work to increase student success by improving family functioning and decreasing risk, ensuring students have access to needed supports and services both at school and in the community, and increasing parent involvement in their child's education and student engagement in school. The focus is on helping students and families to identify and remove barriers to student success and school engagement.

### **Hillside Youth Advocate**

The Hillside Youth Advocates are on-site daily to support students in managing their behavior by setting behavioral expectations, developing individualized behavior plans, providing counseling for students, monitoring student progress through daily reports and working with parents to reinforce behavior expectations at home.

### **Transition Coach**

A student support team member (counselor, social worker, psychologist, student behavior specialist, youth advocate, youth development specialist, case manager, or SPED collaborative teacher) or teacher volunteer who provides coaching, skill instruction and support to specific students who are returning from a short-term or long-term suspension, alternative program, or juvenile facility or incarceration.

# Organization of Student Support Services

## Nottingham High School



The School Social Workers lead a team of multiple partners committed to meeting the needs of the students through supports and interventions. For information about these services or to discuss your student, please call the School Social Worker at 435-4380.

## **Roles of Support Staff in Buildings**

### **Lead Social Worker**

A designated social worker who coordinates all support staff, both internal and external, and leads the work of ensuring that all students have equitable access to services and interventions that they need. The Lead Social Worker will also facilitate the intervention team in this work.

### **Promise Zone Specialist**

The Promise Zone Specialist assists in identifying youth and delivering interventions to increase school functionality and supports students' school functionality through the use of interventions such as collaborative problem-solving and restorative conferencing.

### **Student Assistance Counselors**

Contact Community Services provides this school-based counseling program based on Project SUCCESS and using mental health professionals to assist youth and their families with counseling, education, consultation and referral services.

### **Mental Health Clinicians**

Presently there are 23 Mental Health Clinic Satellites with a staff of 47 whose mission is to match students' emotional and behavioral needs with effective interventions.

### **DASA Coordinator and DASA Coach**

A school administrator serves as the DASA (Dignity for All Students Act) Coordinator to investigate and process all reported bullying and harassment incidents. The DASA coach is a student support team member who ensures that all DASA prevention activities and DASA student interventions are delivered in a timely manner.

### **Student Support Coach**

A student support team member (counselor, social worker, psychologist, student behavior specialist, youth advocate, youth development specialist, case manager or SPED collaborative teacher) or teacher volunteer who provides coaching, skill instruction and support to specific students who need an on-going intervention and close progress monitoring.

### **School Psychologist**

School psychologists are uniquely qualified members of school teams that support students' ability to learn and teachers' ability to teach. They apply expertise in mental health, learning and behavior to help children and youth succeed academically, socially, behaviorally and emotionally.

### **School Counselor**

The school counselor is responsible for school counselors implement a comprehensive school counseling program that promotes and enhances student achievement. Their work is differentiated by attention to developmental stages of student growth, including the needs, tasks and student interests related to those stages.

### **Behavior Intervention Center Staff**

The staff member assigned to the Behavior Intervention Center is a teaching assistant. In elementary and high schools this staff member supervises the BIC and ISS. This staff member is responsible for making sure the student visit is documented and that the student receives the appropriate support.

### **Huntington Family Support Specialists**

The Support Specialists work to increase student success by improving family functioning and decreasing risk, ensuring students have access to needed supports and services both at school and in the community, and increasing parent involvement in their child's education and student engagement in school. The focus is on helping students and families to identify and remove barriers to student success and school engagement.

### **Hillside Youth Advocate**

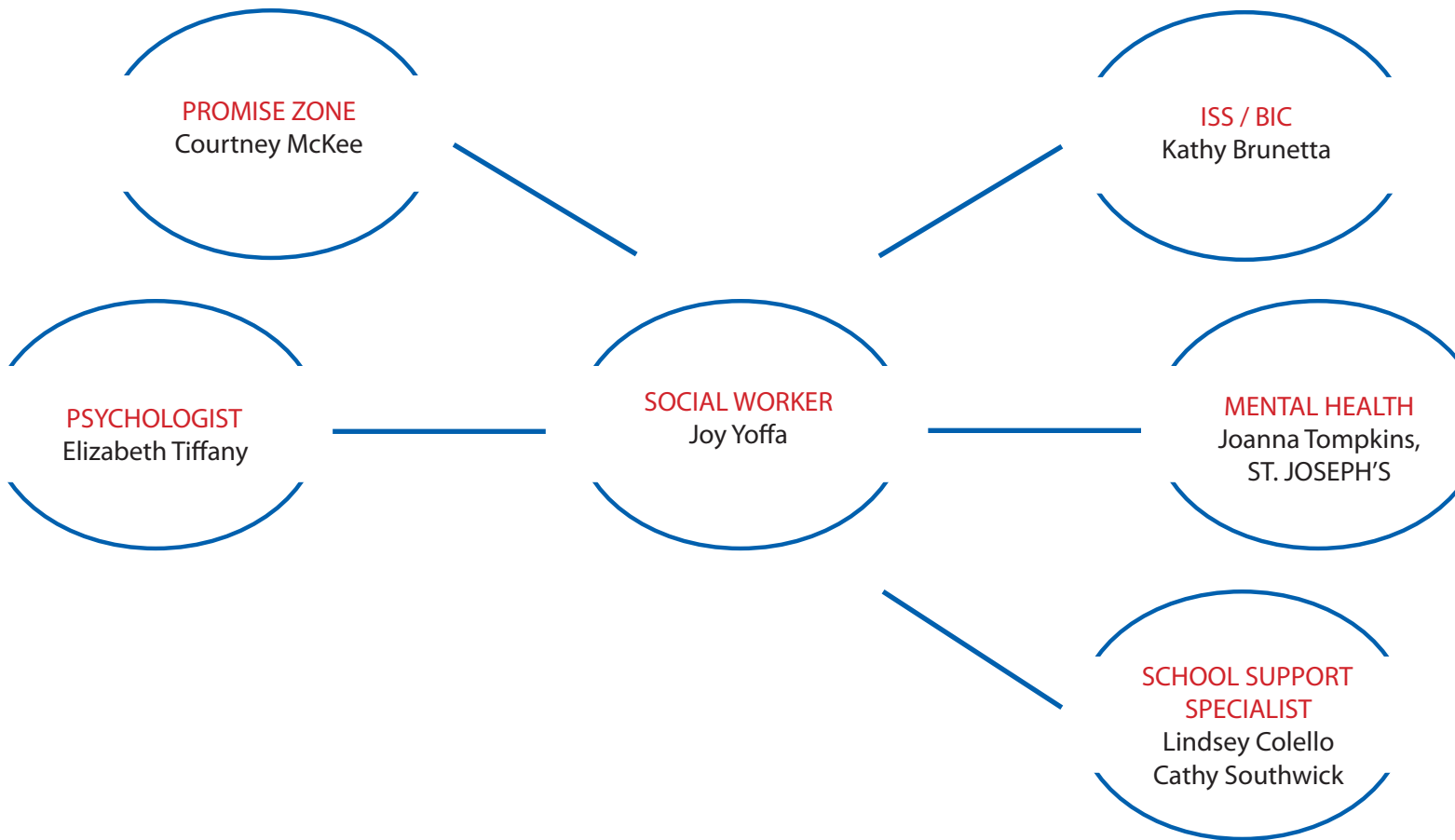
The Hillside Youth Advocates are on-site daily to support students in managing their behavior by setting behavioral expectations, developing individualized behavior plans, providing counseling for students, monitoring student progress through daily reports and working with parents to reinforce behavior expectations at home.

### **Transition Coach**

A student support team member (counselor, social worker, psychologist, student behavior specialist, youth advocate, youth development specialist, case manager, or SPED collaborative teacher) or teacher volunteer who provides coaching, skill instruction and support to specific students who are returning from a short-term or long-term suspension, alternative program, or juvenile facility or incarceration.

# Organization of Student Support Services

## Porter Elementary School



The School Social Workers lead a team of multiple partners committed to meeting the needs of the students through supports and interventions. For information about these services or to discuss your student, please call the School Social Worker at 435-4625.

## **Roles of Support Staff in Buildings**

### **Lead Social Worker**

A designated social worker who coordinates all support staff, both internal and external, and leads the work of ensuring that all students have equitable access to services and interventions that they need. The Lead Social Worker will also facilitate the intervention team in this work.

### **Promise Zone Specialist**

The Promise Zone Specialist assists in identifying youth and delivering interventions to increase school functionality and supports students' school functionality through the use of interventions such as collaborative problem-solving and restorative conferencing.

### **Student Assistance Counselors**

Contact Community Services provides this school-based counseling program based on Project SUCCESS and using mental health professionals to assist youth and their families with counseling, education, consultation and referral services.

### **Mental Health Clinicians**

Presently there are 23 Mental Health Clinic Satellites with a staff of 47 whose mission is to match students' emotional and behavioral needs with effective interventions.

### **DASA Coordinator and DASA Coach**

A school administrator serves as the DASA (Dignity for All Students Act) Coordinator to investigate and process all reported bullying and harassment incidents. The DASA coach is a student support team member who ensures that all DASA prevention activities and DASA student interventions are delivered in a timely manner.

### **Student Support Coach**

A student support team member (counselor, social worker, psychologist, student behavior specialist, youth advocate, youth development specialist, case manager or SPED collaborative teacher) or teacher volunteer who provides coaching, skill instruction and support to specific students who need an on-going intervention and close progress monitoring.

### **School Psychologist**

School psychologists are uniquely qualified members of school teams that support students' ability to learn and teachers' ability to teach. They apply expertise in mental health, learning and behavior to help children and youth succeed academically, socially, behaviorally and emotionally.

### **School Counselor**

The school counselor is responsible for school counselors implement a comprehensive school counseling program that promotes and enhances student achievement. Their work is differentiated by attention to developmental stages of student growth, including the needs, tasks and student interests related to those stages.

### **Behavior Intervention Center Staff**

The staff member assigned to the Behavior Intervention Center is a teaching assistant. In elementary and high schools this staff member supervises the BIC and ISS. This staff member is responsible for making sure the student visit is documented and that the student receives the appropriate support.

### **Huntington Family Support Specialists**

The Support Specialists work to increase student success by improving family functioning and decreasing risk, ensuring students have access to needed supports and services both at school and in the community, and increasing parent involvement in their child's education and student engagement in school. The focus is on helping students and families to identify and remove barriers to student success and school engagement.

### **Hillside Youth Advocate**

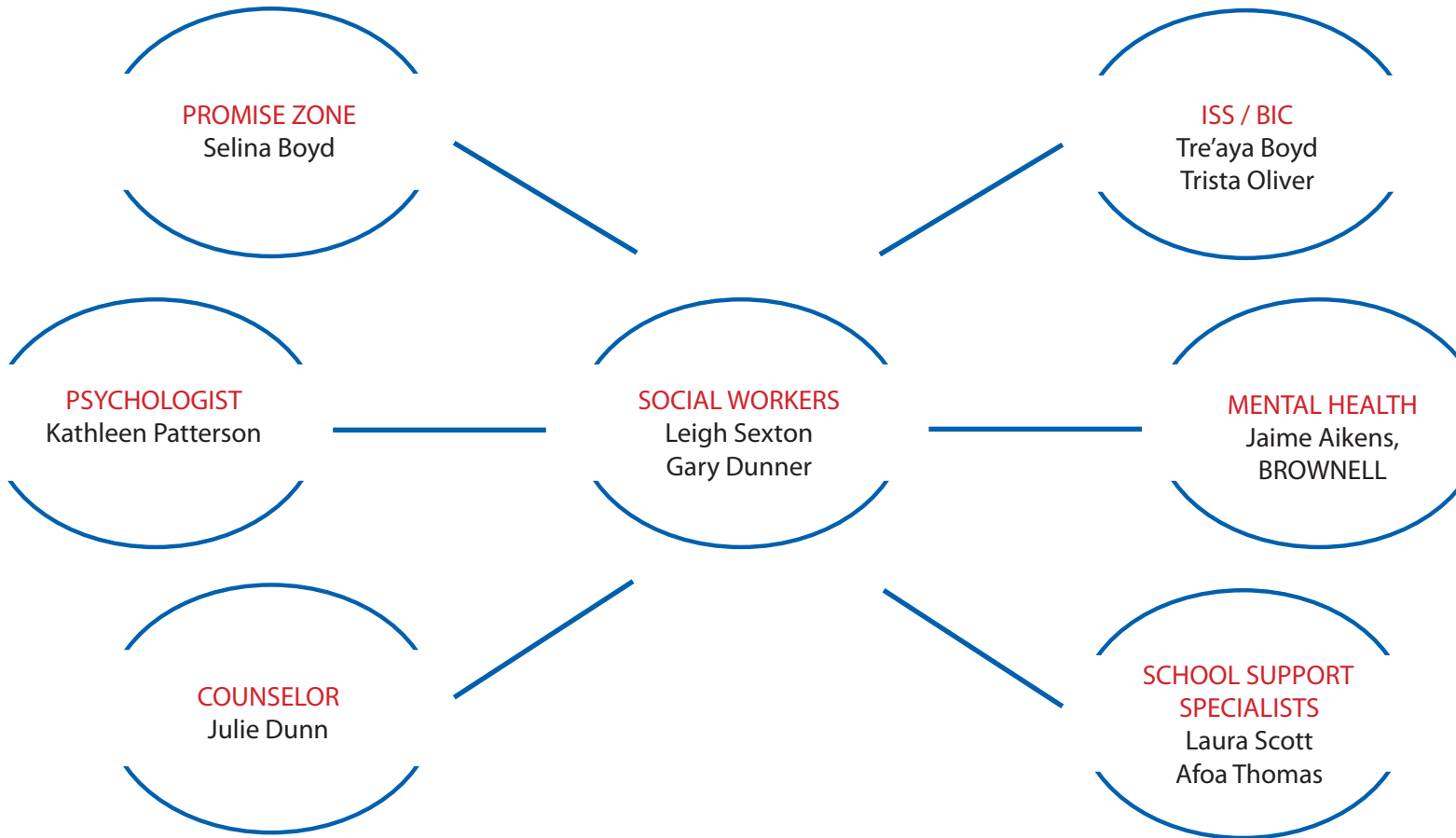
The Hillside Youth Advocates are on-site daily to support students in managing their behavior by setting behavioral expectations, developing individualized behavior plans, providing counseling for students, monitoring student progress through daily reports and working with parents to reinforce behavior expectations at home.

### **Transition Coach**

A student support team member (counselor, social worker, psychologist, student behavior specialist, youth advocate, youth development specialist, case manager, or SPED collaborative teacher) or teacher volunteer who provides coaching, skill instruction and support to specific students who are returning from a short-term or long-term suspension, alternative program, or juvenile facility or incarceration.

# Organization of Student Support Services

## Roberts Pre-K – 8 School



The School Social Workers lead a team of multiple partners committed to meeting the needs of the students through supports and interventions. For information about these services or to discuss your student, please call the School Social Worker at 435-4635.

## ***Roles of Support Staff in Buildings***

### ***Lead Social Worker***

A designated social worker who coordinates all support staff, both internal and external, and leads the work of ensuring that all students have equitable access to services and interventions that they need. The Lead Social Worker will also facilitate the intervention team in this work.

### ***Promise Zone Specialist***

The Promise Zone Specialist assists in identifying youth and delivering interventions to increase school functionality and supports students' school functionality through the use of interventions such as collaborative problem-solving and restorative conferencing.

### ***Student Assistance Counselors***

Contact Community Services provides this school-based counseling program based on Project SUCCESS and using mental health professionals to assist youth and their families with counseling, education, consultation and referral services.

### ***Mental Health Clinicians***

Presently there are 23 Mental Health Clinic Satellites with a staff of 47 whose mission is to match students' emotional and behavioral needs with effective interventions.

### ***DASA Coordinator and DASA Coach***

A school administrator serves as the DASA (Dignity for All Students Act) Coordinator to investigate and process all reported bullying and harassment incidents. The DASA coach is a student support team member who ensures that all DASA prevention activities and DASA student interventions are delivered in a timely manner.

### ***Student Support Coach***

A student support team member (counselor, social worker, psychologist, student behavior specialist, youth advocate, youth development specialist, case manager or SPED collaborative teacher) or teacher volunteer who provides coaching, skill instruction and support to specific students who need an on-going intervention and close progress monitoring.

### ***School Psychologist***

School psychologists are uniquely qualified members of school teams that support students' ability to learn and teachers' ability to teach. They apply expertise in mental health, learning and behavior to help children and youth succeed academically, socially, behaviorally and emotionally.

### ***School Counselor***

The school counselor is responsible for school counselors implement a comprehensive school counseling program that promotes and enhances student achievement. Their work is differentiated by attention to developmental stages of student growth, including the needs, tasks and student interests related to those stages.

### ***Behavior Intervention Center Staff***

The staff member assigned to the Behavior Intervention Center is a teaching assistant. In elementary and high schools this staff member supervises the BIC and ISS. This staff member is responsible for making sure the student visit is documented and that the student receives the appropriate support.

### ***Huntington Family Support Specialists***

The Support Specialists work to increase student success by improving family functioning and decreasing risk, ensuring students have access to needed supports and services both at school and in the community, and increasing parent involvement in their child's education and student engagement in school. The focus is on helping students and families to identify and remove barriers to student success and school engagement.

### ***Hillside Youth Advocate***

The Hillside Youth Advocates are on-site daily to support students in managing their behavior by setting behavioral expectations, developing individualized behavior plans, providing counseling for students, monitoring student progress through daily reports and working with parents to reinforce behavior expectations at home.

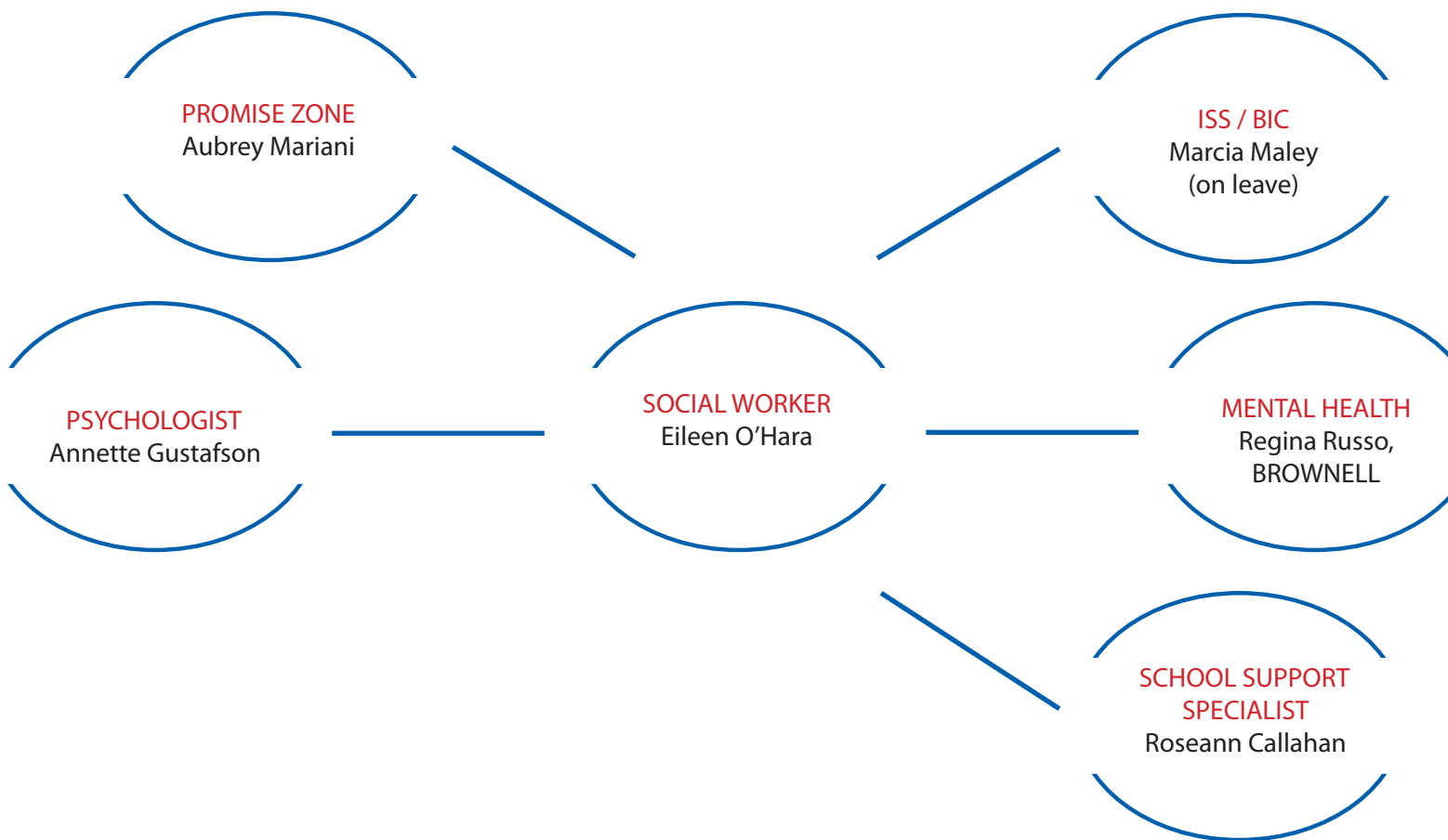
### ***Transition Coach***

A student support team member (counselor, social worker, psychologist, student behavior specialist, youth advocate, youth development specialist, case manager, or SPED collaborative teacher) or teacher volunteer who provides coaching, skill instruction and support to specific students who are returning from a short-term or long-term suspension, alternative program, or juvenile facility or incarceration.



# Organization of Student Support Services

## Salem Hyde Elementary School



The School Social Workers lead a team of multiple partners committed to meeting the needs of the students through supports and interventions. For information about these services or to discuss your student, please call the School Social Worker at 435-4570.

## **Roles of Support Staff in Buildings**

### **Lead Social Worker**

A designated social worker who coordinates all support staff, both internal and external, and leads the work of ensuring that all students have equitable access to services and interventions that they need. The Lead Social Worker will also facilitate the intervention team in this work.

### **Promise Zone Specialist**

The Promise Zone Specialist assists in identifying youth and delivering interventions to increase school functionality and supports students' school functionality through the use of interventions such as collaborative problem-solving and restorative conferencing.

### **Student Assistance Counselors**

Contact Community Services provides this school-based counseling program based on Project SUCCESS and using mental health professionals to assist youth and their families with counseling, education, consultation and referral services.

### **Mental Health Clinicians**

Presently there are 23 Mental Health Clinic Satellites with a staff of 47 whose mission is to match students' emotional and behavioral needs with effective interventions.

### **DASA Coordinator and DASA Coach**

A school administrator serves as the DASA (Dignity for All Students Act) Coordinator to investigate and process all reported bullying and harassment incidents. The DASA coach is a student support team member who ensures that all DASA prevention activities and DASA student interventions are delivered in a timely manner.

### **Student Support Coach**

A student support team member (counselor, social worker, psychologist, student behavior specialist, youth advocate, youth development specialist, case manager or SPED collaborative teacher) or teacher volunteer who provides coaching, skill instruction and support to specific students who need an on-going intervention and close progress monitoring.

### **School Psychologist**

School psychologists are uniquely qualified members of school teams that support students' ability to learn and teachers' ability to teach. They apply expertise in mental health, learning and behavior to help children and youth succeed academically, socially, behaviorally and emotionally.

### **School Counselor**

The school counselor is responsible for school counselors implement a comprehensive school counseling program that promotes and enhances student achievement. Their work is differentiated by attention to developmental stages of student growth, including the needs, tasks and student interests related to those stages.

### **Behavior Intervention Center Staff**

The staff member assigned to the Behavior Intervention Center is a teaching assistant. In elementary and high schools this staff member supervises the BIC and ISS. This staff member is responsible for making sure the student visit is documented and that the student receives the appropriate support.

### **Huntington Family Support Specialists**

The Support Specialists work to increase student success by improving family functioning and decreasing risk, ensuring students have access to needed supports and services both at school and in the community, and increasing parent involvement in their child's education and student engagement in school. The focus is on helping students and families to identify and remove barriers to student success and school engagement.

### **Hillside Youth Advocate**

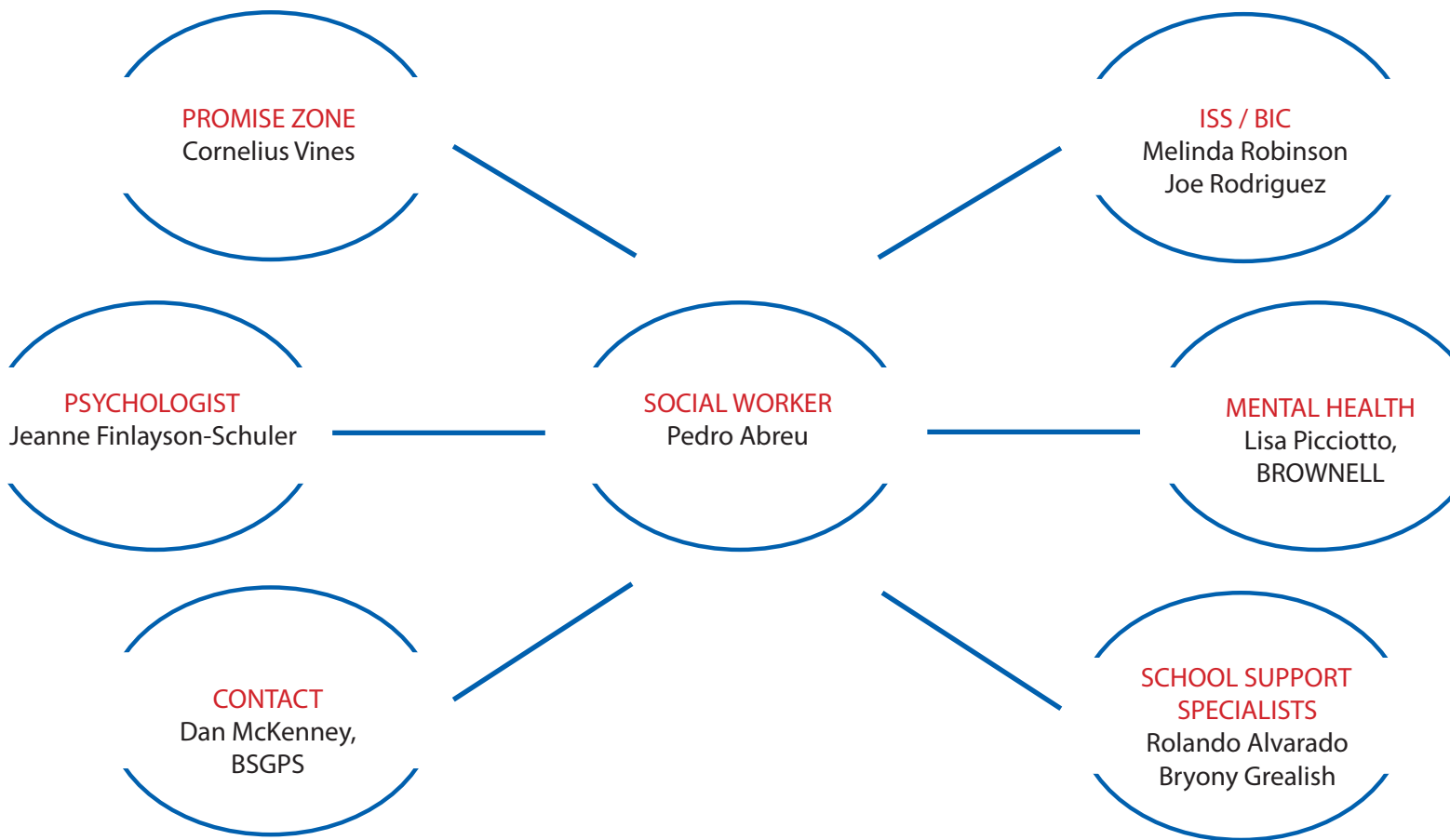
The Hillside Youth Advocates are on-site daily to support students in managing their behavior by setting behavioral expectations, developing individualized behavior plans, providing counseling for students, monitoring student progress through daily reports and working with parents to reinforce behavior expectations at home.

### **Transition Coach**

A student support team member (counselor, social worker, psychologist, student behavior specialist, youth advocate, youth development specialist, case manager, or SPED collaborative teacher) or teacher volunteer who provides coaching, skill instruction and support to specific students who are returning from a short-term or long-term suspension, alternative program, or juvenile facility or incarceration.

# Organization of Student Support Services

## Seymour Elementary School



The School Social Workers lead a team of multiple partners committed to meeting the needs of the students through supports and interventions. For information about these services or to discuss your student, please call the School Social Worker at 435-4645.

## **Roles of Support Staff in Buildings**

### **Lead Social Worker**

A designated social worker who coordinates all support staff, both internal and external, and leads the work of ensuring that all students have equitable access to services and interventions that they need. The Lead Social Worker will also facilitate the intervention team in this work.

### **Promise Zone Specialist**

The Promise Zone Specialist assists in identifying youth and delivering interventions to increase school functionality and supports students' school functionality through the use of interventions such as collaborative problem-solving and restorative conferencing.

### **Student Assistance Counselors**

Contact Community Services provides this school-based counseling program based on Project SUCCESS and using mental health professionals to assist youth and their families with counseling, education, consultation and referral services.

### **Mental Health Clinicians**

Presently there are 23 Mental Health Clinic Satellites with a staff of 47 whose mission is to match students' emotional and behavioral needs with effective interventions.

### **DASA Coordinator and DASA Coach**

A school administrator serves as the DASA (Dignity for All Students Act) Coordinator to investigate and process all reported bullying and harassment incidents. The DASA coach is a student support team member who ensures that all DASA prevention activities and DASA student interventions are delivered in a timely manner.

### **Student Support Coach**

A student support team member (counselor, social worker, psychologist, student behavior specialist, youth advocate, youth development specialist, case manager or SPED collaborative teacher) or teacher volunteer who provides coaching, skill instruction and support to specific students who need an on-going intervention and close progress monitoring.

### **School Psychologist**

School psychologists are uniquely qualified members of school teams that support students' ability to learn and teachers' ability to teach. They apply expertise in mental health, learning and behavior to help children and youth succeed academically, socially, behaviorally and emotionally.

### **School Counselor**

The school counselor is responsible for school counselors implement a comprehensive school counseling program that promotes and enhances student achievement. Their work is differentiated by attention to developmental stages of student growth, including the needs, tasks and student interests related to those stages.

### **Behavior Intervention Center Staff**

The staff member assigned to the Behavior Intervention Center is a teaching assistant. In elementary and high schools this staff member supervises the BIC and ISS. This staff member is responsible for making sure the student visit is documented and that the student receives the appropriate support.

### **Huntington Family Support Specialists**

The Support Specialists work to increase student success by improving family functioning and decreasing risk, ensuring students have access to needed supports and services both at school and in the community, and increasing parent involvement in their child's education and student engagement in school. The focus is on helping students and families to identify and remove barriers to student success and school engagement.

### **Hillside Youth Advocate**

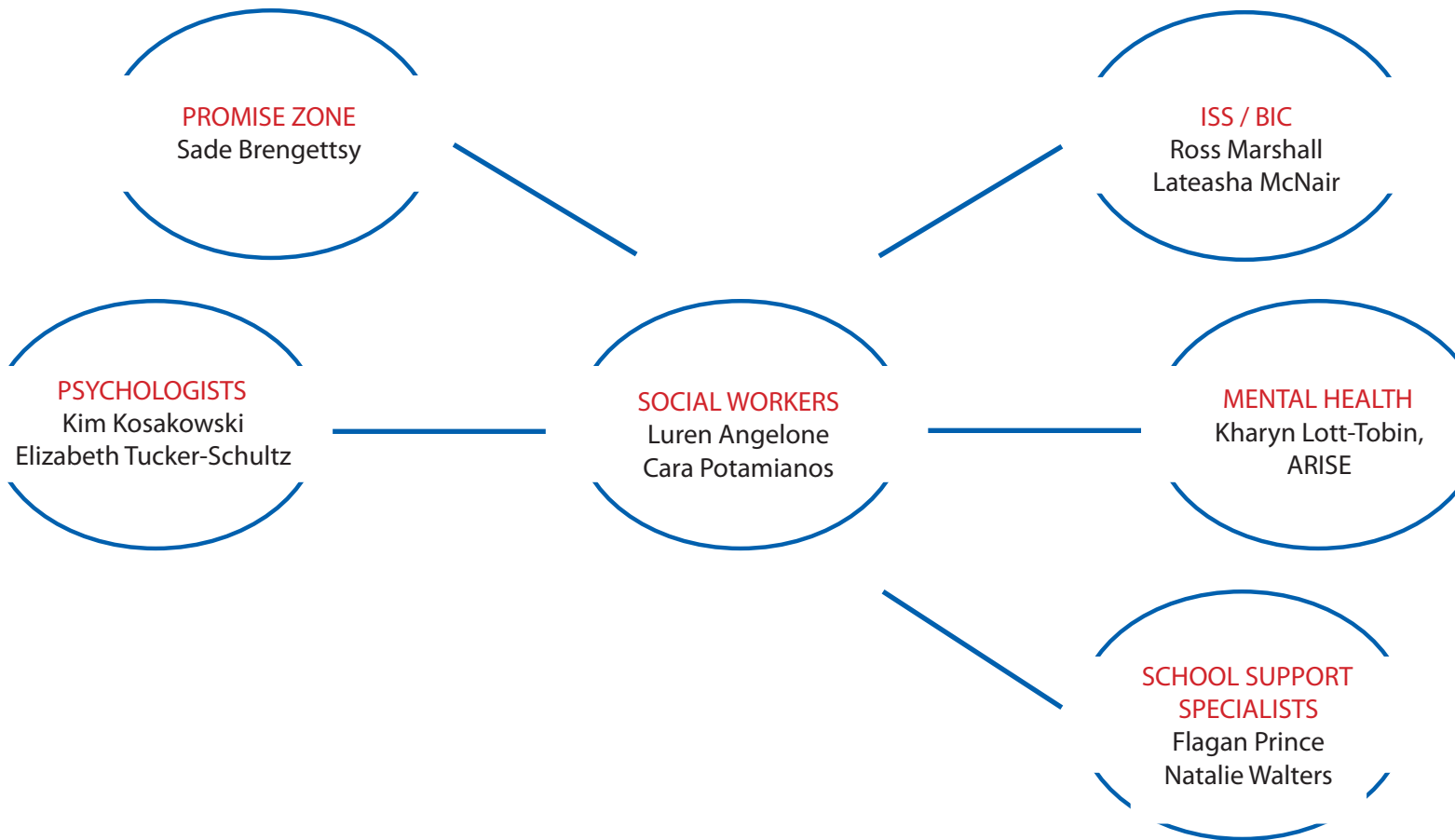
The Hillside Youth Advocates are on-site daily to support students in managing their behavior by setting behavioral expectations, developing individualized behavior plans, providing counseling for students, monitoring student progress through daily reports and working with parents to reinforce behavior expectations at home.

### **Transition Coach**

A student support team member (counselor, social worker, psychologist, student behavior specialist, youth advocate, youth development specialist, case manager, or SPED collaborative teacher) or teacher volunteer who provides coaching, skill instruction and support to specific students who are returning from a short-term or long-term suspension, alternative program, or juvenile facility or incarceration.

# Organization of Student Support Services

## Edward Smith Pre-K – 8 School



The School Social Workers lead a team of multiple partners committed to meeting the needs of the students through supports and interventions. For information about these services or to discuss your student, please call the School Social Worker at 435-4650.

## **Roles of Support Staff in Buildings**

### **Lead Social Worker**

A designated social worker who coordinates all support staff, both internal and external, and leads the work of ensuring that all students have equitable access to services and interventions that they need. The Lead Social Worker will also facilitate the intervention team in this work.

### **Promise Zone Specialist**

The Promise Zone Specialist assists in identifying youth and delivering interventions to increase school functionality and supports students' school functionality through the use of interventions such as collaborative problem-solving and restorative conferencing.

### **Student Assistance Counselors**

Contact Community Services provides this school-based counseling program based on Project SUCCESS and using mental health professionals to assist youth and their families with counseling, education, consultation and referral services.

### **Mental Health Clinicians**

Presently there are 23 Mental Health Clinic Satellites with a staff of 47 whose mission is to match students' emotional and behavioral needs with effective interventions.

### **DASA Coordinator and DASA Coach**

A school administrator serves as the DASA (Dignity for All Students Act) Coordinator to investigate and process all reported bullying and harassment incidents. The DASA coach is a student support team member who ensures that all DASA prevention activities and DASA student interventions are delivered in a timely manner.

### **Student Support Coach**

A student support team member (counselor, social worker, psychologist, student behavior specialist, youth advocate, youth development specialist, case manager or SPED collaborative teacher) or teacher volunteer who provides coaching, skill instruction and support to specific students who need an on-going intervention and close progress monitoring.

### **School Psychologist**

School psychologists are uniquely qualified members of school teams that support students' ability to learn and teachers' ability to teach. They apply expertise in mental health, learning and behavior to help children and youth succeed academically, socially, behaviorally and emotionally.

### **School Counselor**

The school counselor is responsible for school counselors implement a comprehensive school counseling program that promotes and enhances student achievement. Their work is differentiated by attention to developmental stages of student growth, including the needs, tasks and student interests related to those stages.

### **Behavior Intervention Center Staff**

The staff member assigned to the Behavior Intervention Center is a teaching assistant. In elementary and high schools this staff member supervises the BIC and ISS. This staff member is responsible for making sure the student visit is documented and that the student receives the appropriate support.

### **Huntington Family Support Specialists**

The Support Specialists work to increase student success by improving family functioning and decreasing risk, ensuring students have access to needed supports and services both at school and in the community, and increasing parent involvement in their child's education and student engagement in school. The focus is on helping students and families to identify and remove barriers to student success and school engagement.

### **Hillside Youth Advocate**

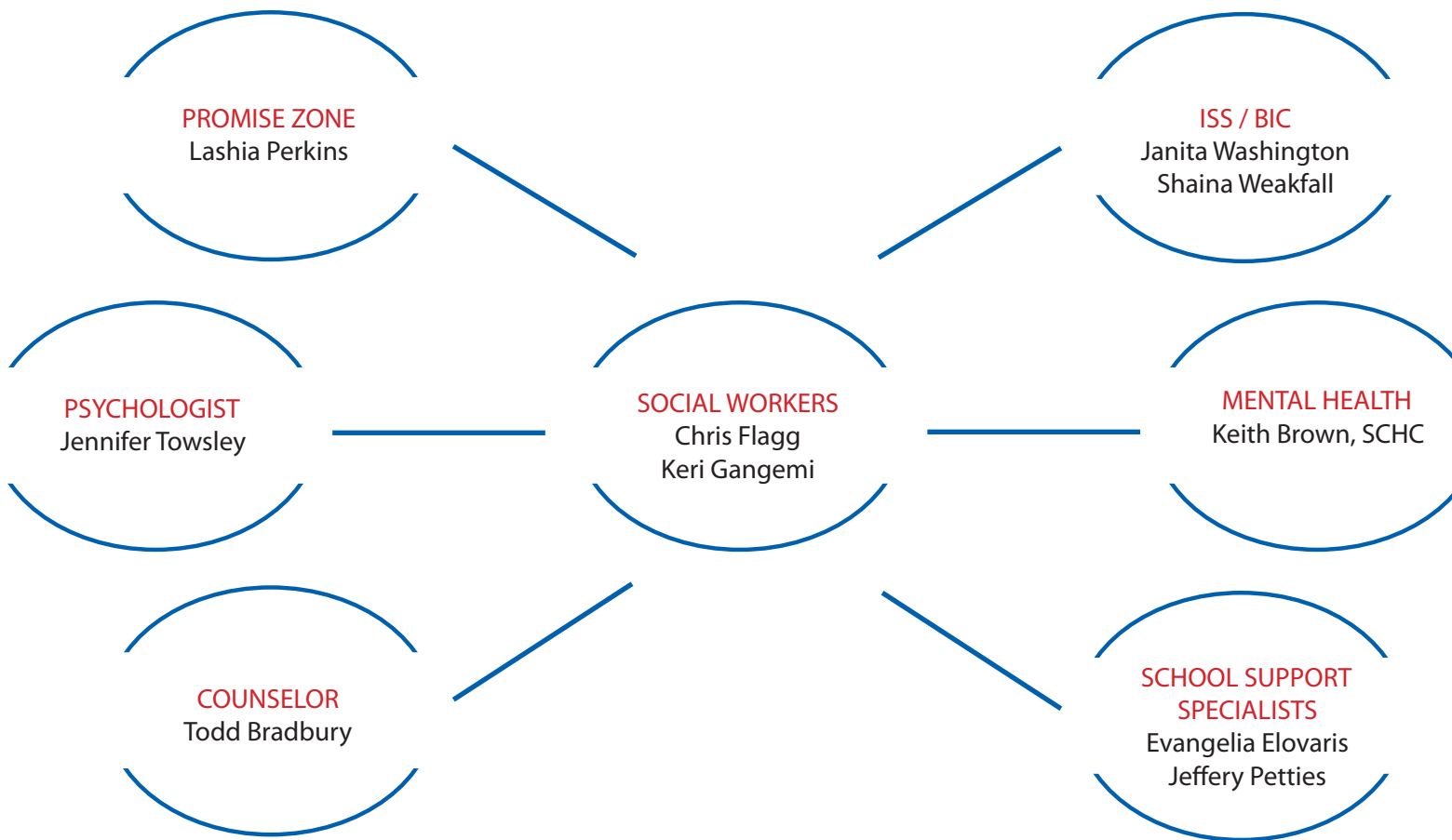
The Hillside Youth Advocates are on-site daily to support students in managing their behavior by setting behavioral expectations, developing individualized behavior plans, providing counseling for students, monitoring student progress through daily reports and working with parents to reinforce behavior expectations at home.

### **Transition Coach**

A student support team member (counselor, social worker, psychologist, student behavior specialist, youth advocate, youth development specialist, case manager, or SPED collaborative teacher) or teacher volunteer who provides coaching, skill instruction and support to specific students who are returning from a short-term or long-term suspension, alternative program, or juvenile facility or incarceration.

# Organization of Student Support Services

## Hurlbut W. Smith Pre-K – 8 School



The School Social Workers lead a team of multiple partners committed to meeting the needs of the students through supports and interventions. For information about these services or to discuss your student, please call the School Social Worker at 435-4490.

## **Roles of Support Staff in Buildings**

### **Lead Social Worker**

A designated social worker who coordinates all support staff, both internal and external, and leads the work of ensuring that all students have equitable access to services and interventions that they need. The Lead Social Worker will also facilitate the intervention team in this work.

### **Promise Zone Specialist**

The Promise Zone Specialist assists in identifying youth and delivering interventions to increase school functionality and supports students' school functionality through the use of interventions such as collaborative problem-solving and restorative conferencing.

### **Student Assistance Counselors**

Contact Community Services provides this school-based counseling program based on Project SUCCESS and using mental health professionals to assist youth and their families with counseling, education, consultation and referral services.

### **Mental Health Clinicians**

Presently there are 23 Mental Health Clinic Satellites with a staff of 47 whose mission is to match students' emotional and behavioral needs with effective interventions.

### **DASA Coordinator and DASA Coach**

A school administrator serves as the DASA (Dignity for All Students Act) Coordinator to investigate and process all reported bullying and harassment incidents. The DASA coach is a student support team member who ensures that all DASA prevention activities and DASA student interventions are delivered in a timely manner.

### **Student Support Coach**

A student support team member (counselor, social worker, psychologist, student behavior specialist, youth advocate, youth development specialist, case manager or SPED collaborative teacher) or teacher volunteer who provides coaching, skill instruction and support to specific students who need an on-going intervention and close progress monitoring.

### **School Psychologist**

School psychologists are uniquely qualified members of school teams that support students' ability to learn and teachers' ability to teach. They apply expertise in mental health, learning and behavior to help children and youth succeed academically, socially, behaviorally and emotionally.

### **School Counselor**

The school counselor is responsible for school counselors implement a comprehensive school counseling program that promotes and enhances student achievement. Their work is differentiated by attention to developmental stages of student growth, including the needs, tasks and student interests related to those stages.

### **Behavior Intervention Center Staff**

The staff member assigned to the Behavior Intervention Center is a teaching assistant. In elementary and high schools this staff member supervises the BIC and ISS. This staff member is responsible for making sure the student visit is documented and that the student receives the appropriate support.

### **Huntington Family Support Specialists**

The Support Specialists work to increase student success by improving family functioning and decreasing risk, ensuring students have access to needed supports and services both at school and in the community, and increasing parent involvement in their child's education and student engagement in school. The focus is on helping students and families to identify and remove barriers to student success and school engagement.

### **Hillside Youth Advocate**

The Hillside Youth Advocates are on-site daily to support students in managing their behavior by setting behavioral expectations, developing individualized behavior plans, providing counseling for students, monitoring student progress through daily reports and working with parents to reinforce behavior expectations at home.

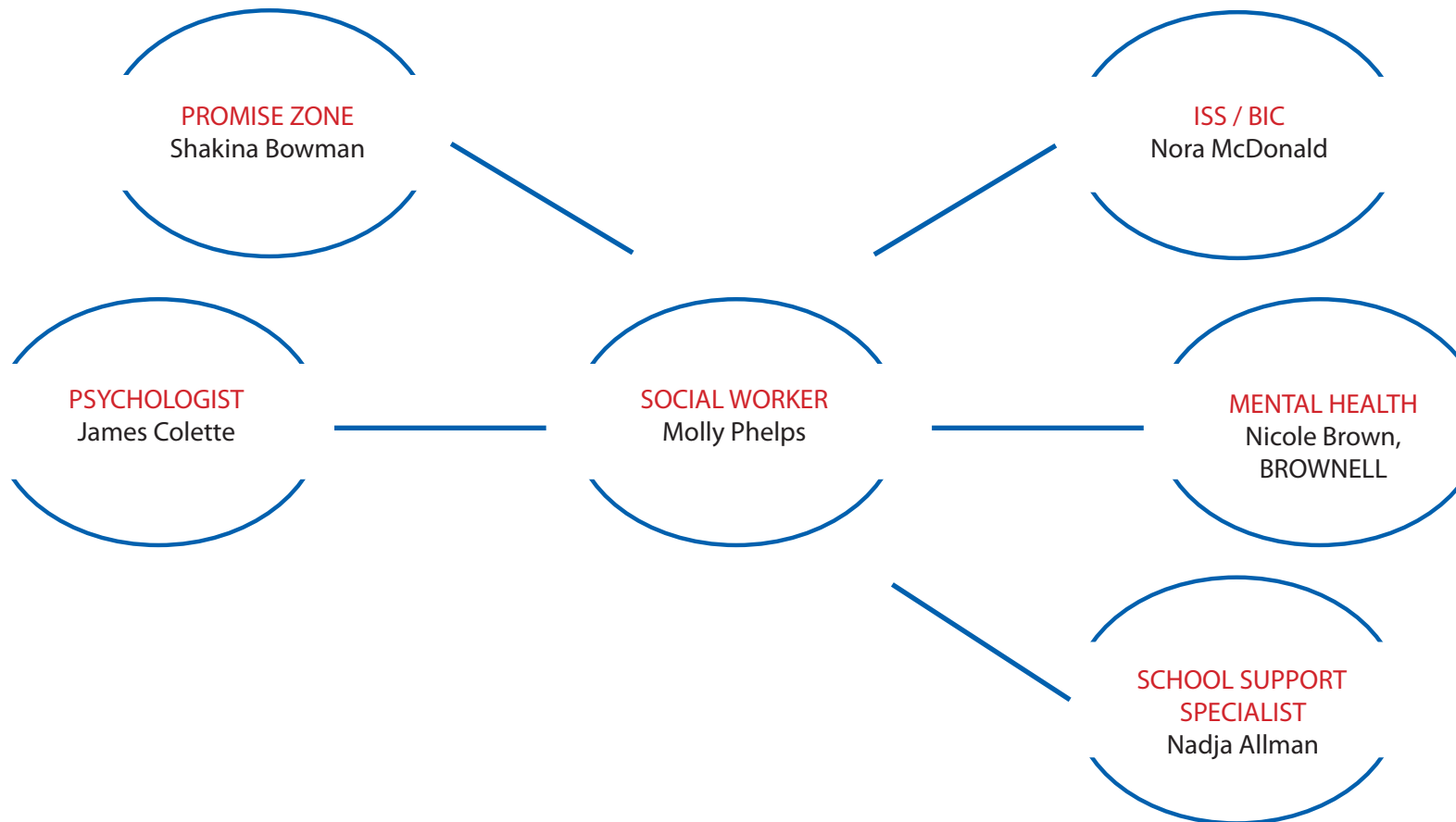
### **Transition Coach**

A student support team member (counselor, social worker, psychologist, student behavior specialist, youth advocate, youth development specialist, case manager, or SPED collaborative teacher) or teacher volunteer who provides coaching, skill instruction and support to specific students who are returning from a short-term or long-term suspension, alternative program, or juvenile facility or incarceration.



# Organization of Student Support Services

## Van Duyn Elementary School



The School Social Workers lead a team of multiple partners committed to meeting the needs of the students through supports and interventions. For information about these services or to discuss your student, please call the School Social Worker at 435-4836.

## **Roles of Support Staff in Buildings**

### **Lead Social Worker**

A designated social worker who coordinates all support staff, both internal and external, and leads the work of ensuring that all students have equitable access to services and interventions that they need. The Lead Social Worker will also facilitate the intervention team in this work.

### **Promise Zone Specialist**

The Promise Zone Specialist assists in identifying youth and delivering interventions to increase school functionality and supports students' school functionality through the use of interventions such as collaborative problem-solving and restorative conferencing.

### **Student Assistance Counselors**

Contact Community Services provides this school-based counseling program based on Project SUCCESS and using mental health professionals to assist youth and their families with counseling, education, consultation and referral services.

### **Mental Health Clinicians**

Presently there are 23 Mental Health Clinic Satellites with a staff of 47 whose mission is to match students' emotional and behavioral needs with effective interventions.

### **DASA Coordinator and DASA Coach**

A school administrator serves as the DASA (Dignity for All Students Act) Coordinator to investigate and process all reported bullying and harassment incidents. The DASA coach is a student support team member who ensures that all DASA prevention activities and DASA student interventions are delivered in a timely manner.

### **Student Support Coach**

A student support team member (counselor, social worker, psychologist, student behavior specialist, youth advocate, youth development specialist, case manager or SPED collaborative teacher) or teacher volunteer who provides coaching, skill instruction and support to specific students who need an on-going intervention and close progress monitoring.

### **School Psychologist**

School psychologists are uniquely qualified members of school teams that support students' ability to learn and teachers' ability to teach. They apply expertise in mental health, learning and behavior to help children and youth succeed academically, socially, behaviorally and emotionally.

### **School Counselor**

The school counselor is responsible for school counselors implement a comprehensive school counseling program that promotes and enhances student achievement. Their work is differentiated by attention to developmental stages of student growth, including the needs, tasks and student interests related to those stages.

### **Behavior Intervention Center Staff**

The staff member assigned to the Behavior Intervention Center is a teaching assistant. In elementary and high schools this staff member supervises the BIC and ISS. This staff member is responsible for making sure the student visit is documented and that the student receives the appropriate support.

### **Huntington Family Support Specialists**

The Support Specialists work to increase student success by improving family functioning and decreasing risk, ensuring students have access to needed supports and services both at school and in the community, and increasing parent involvement in their child's education and student engagement in school. The focus is on helping students and families to identify and remove barriers to student success and school engagement.

### **Hillside Youth Advocate**

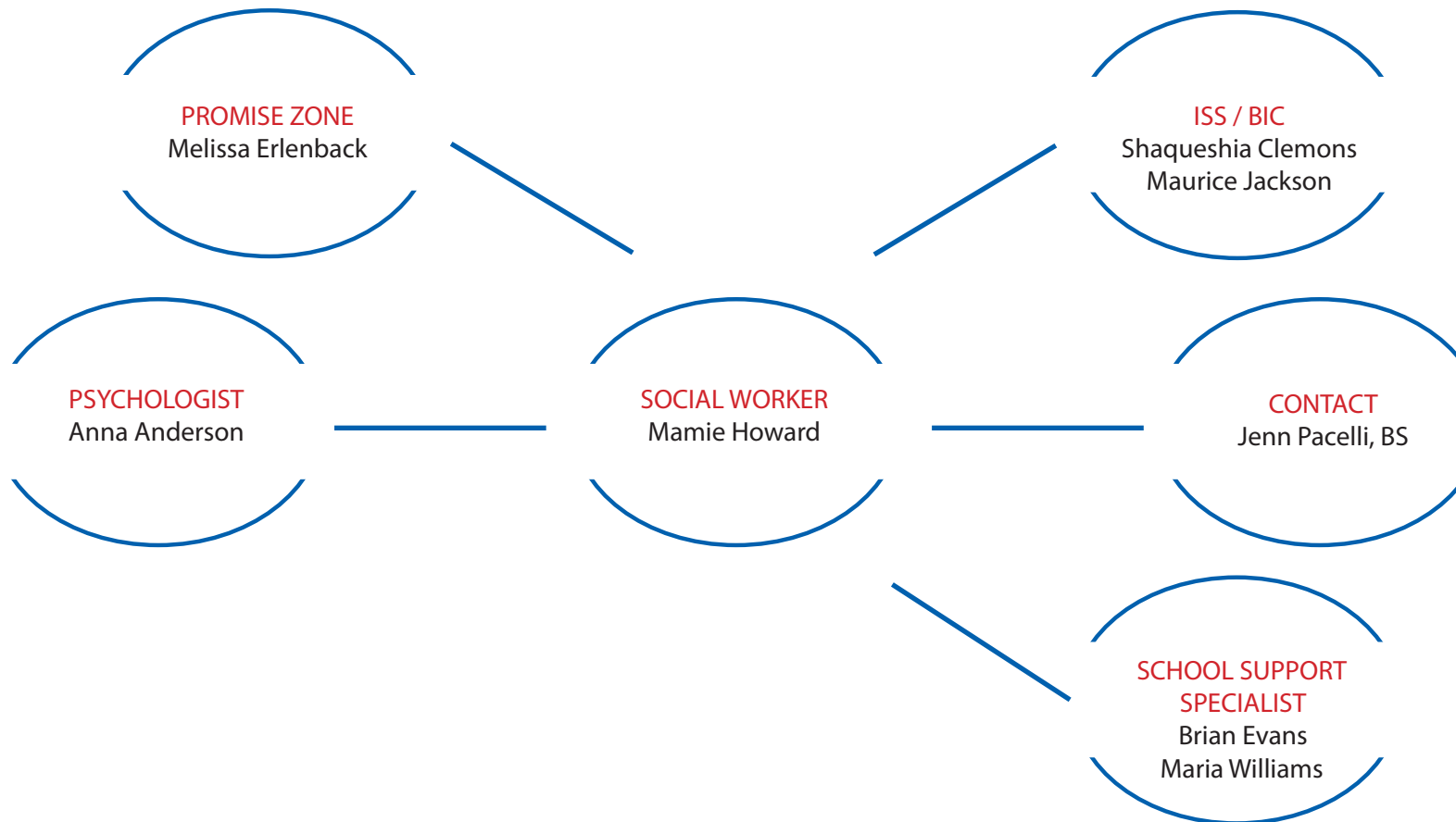
The Hillside Youth Advocates are on-site daily to support students in managing their behavior by setting behavioral expectations, developing individualized behavior plans, providing counseling for students, monitoring student progress through daily reports and working with parents to reinforce behavior expectations at home.

### **Transition Coach**

A student support team member (counselor, social worker, psychologist, student behavior specialist, youth advocate, youth development specialist, case manager, or SPED collaborative teacher) or teacher volunteer who provides coaching, skill instruction and support to specific students who are returning from a short-term or long-term suspension, alternative program, or juvenile facility or incarceration.

# Organization of Student Support Services

## Webster Elementary School



The School Social Workers lead a team of multiple partners committed to meeting the needs of the students through supports and interventions. For information about these services or to discuss your student, please call the School Social Worker at 435-4670.

## **Roles of Support Staff in Buildings**

### **Lead Social Worker**

A designated social worker who coordinates all support staff, both internal and external, and leads the work of ensuring that all students have equitable access to services and interventions that they need. The Lead Social Worker will also facilitate the intervention team in this work.

### **Promise Zone Specialist**

The Promise Zone Specialist assists in identifying youth and delivering interventions to increase school functionality and supports students' school functionality through the use of interventions such as collaborative problem-solving and restorative conferencing.

### **Student Assistance Counselors**

Contact Community Services provides this school-based counseling program based on Project SUCCESS and using mental health professionals to assist youth and their families with counseling, education, consultation and referral services.

### **Mental Health Clinicians**

Presently there are 23 Mental Health Clinic Satellites with a staff of 47 whose mission is to match students' emotional and behavioral needs with effective interventions.

### **DASA Coordinator and DASA Coach**

A school administrator serves as the DASA (Dignity for All Students Act) Coordinator to investigate and process all reported bullying and harassment incidents. The DASA coach is a student support team member who ensures that all DASA prevention activities and DASA student interventions are delivered in a timely manner.

### **Student Support Coach**

A student support team member (counselor, social worker, psychologist, student behavior specialist, youth advocate, youth development specialist, case manager or SPED collaborative teacher) or teacher volunteer who provides coaching, skill instruction and support to specific students who need an on-going intervention and close progress monitoring.

### **School Psychologist**

School psychologists are uniquely qualified members of school teams that support students' ability to learn and teachers' ability to teach. They apply expertise in mental health, learning and behavior to help children and youth succeed academically, socially, behaviorally and emotionally.

### **School Counselor**

The school counselor is responsible for school counselors implement a comprehensive school counseling program that promotes and enhances student achievement. Their work is differentiated by attention to developmental stages of student growth, including the needs, tasks and student interests related to those stages.

### **Behavior Intervention Center Staff**

The staff member assigned to the Behavior Intervention Center is a teaching assistant. In elementary and high schools this staff member supervises the BIC and ISS. This staff member is responsible for making sure the student visit is documented and that the student receives the appropriate support.

### **Huntington Family Support Specialists**

The Support Specialists work to increase student success by improving family functioning and decreasing risk, ensuring students have access to needed supports and services both at school and in the community, and increasing parent involvement in their child's education and student engagement in school. The focus is on helping students and families to identify and remove barriers to student success and school engagement.

### **Hillside Youth Advocate**

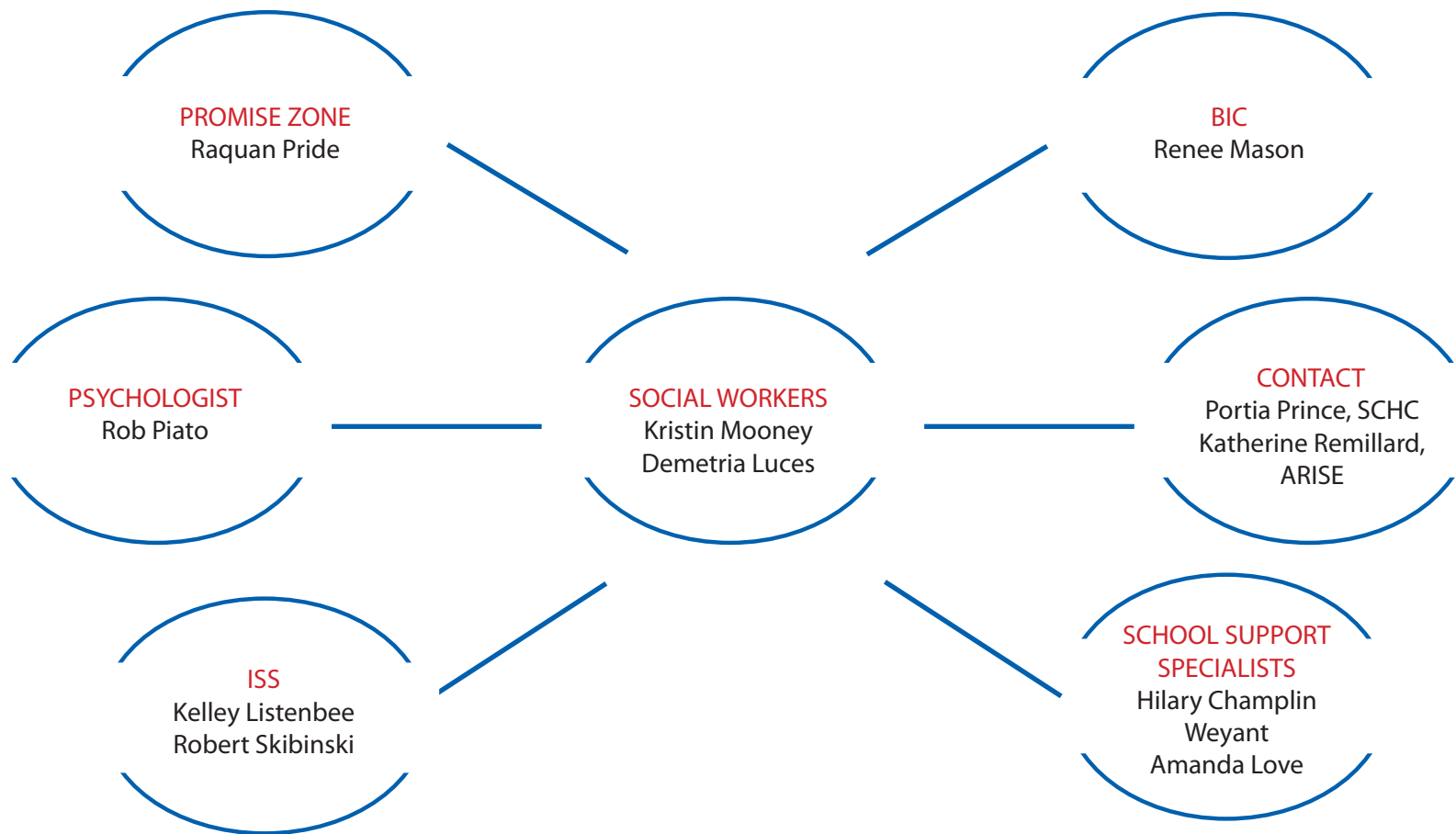
The Hillside Youth Advocates are on-site daily to support students in managing their behavior by setting behavioral expectations, developing individualized behavior plans, providing counseling for students, monitoring student progress through daily reports and working with parents to reinforce behavior expectations at home.

### **Transition Coach**

A student support team member (counselor, social worker, psychologist, student behavior specialist, youth advocate, youth development specialist, case manager, or SPED collaborative teacher) or teacher volunteer who provides coaching, skill instruction and support to specific students who are returning from a short-term or long-term suspension, alternative program, or juvenile facility or incarceration.

# Organization of Student Support Services

## Dr. Weeks Elementary School



The School Social Workers lead a team of multiple partners committed to meeting the needs of the students through supports and interventions. For information about these services or to discuss your student, please call the School Social Worker at 435-4097.

## **Roles of Support Staff in Buildings**

### **Lead Social Worker**

A designated social worker who coordinates all support staff, both internal and external, and leads the work of ensuring that all students have equitable access to services and interventions that they need. The Lead Social Worker will also facilitate the intervention team in this work.

### **Promise Zone Specialist**

The Promise Zone Specialist assists in identifying youth and delivering interventions to increase school functionality and supports students' school functionality through the use of interventions such as collaborative problem-solving and restorative conferencing.

### **Student Assistance Counselors**

Contact Community Services provides this school-based counseling program based on Project SUCCESS and using mental health professionals to assist youth and their families with counseling, education, consultation and referral services.

### **Mental Health Clinicians**

Presently there are 23 Mental Health Clinic Satellites with a staff of 47 whose mission is to match students' emotional and behavioral needs with effective interventions.

### **DASA Coordinator and DASA Coach**

A school administrator serves as the DASA (Dignity for All Students Act) Coordinator to investigate and process all reported bullying and harassment incidents. The DASA coach is a student support team member who ensures that all DASA prevention activities and DASA student interventions are delivered in a timely manner.

### **Student Support Coach**

A student support team member (counselor, social worker, psychologist, student behavior specialist, youth advocate, youth development specialist, case manager or SPED collaborative teacher) or teacher volunteer who provides coaching, skill instruction and support to specific students who need an on-going intervention and close progress monitoring.

### **School Psychologist**

School psychologists are uniquely qualified members of school teams that support students' ability to learn and teachers' ability to teach. They apply expertise in mental health, learning and behavior to help children and youth succeed academically, socially, behaviorally and emotionally.

### **School Counselor**

The school counselor is responsible for school counselors implement a comprehensive school counseling program that promotes and enhances student achievement. Their work is differentiated by attention to developmental stages of student growth, including the needs, tasks and student interests related to those stages.

### **Behavior Intervention Center Staff**

The staff member assigned to the Behavior Intervention Center is a teaching assistant. In elementary and high schools this staff member supervises the BIC and ISS. This staff member is responsible for making sure the student visit is documented and that the student receives the appropriate support.

### **Huntington Family Support Specialists**

The Support Specialists work to increase student success by improving family functioning and decreasing risk, ensuring students have access to needed supports and services both at school and in the community, and increasing parent involvement in their child's education and student engagement in school. The focus is on helping students and families to identify and remove barriers to student success and school engagement.

### **Hillside Youth Advocate**

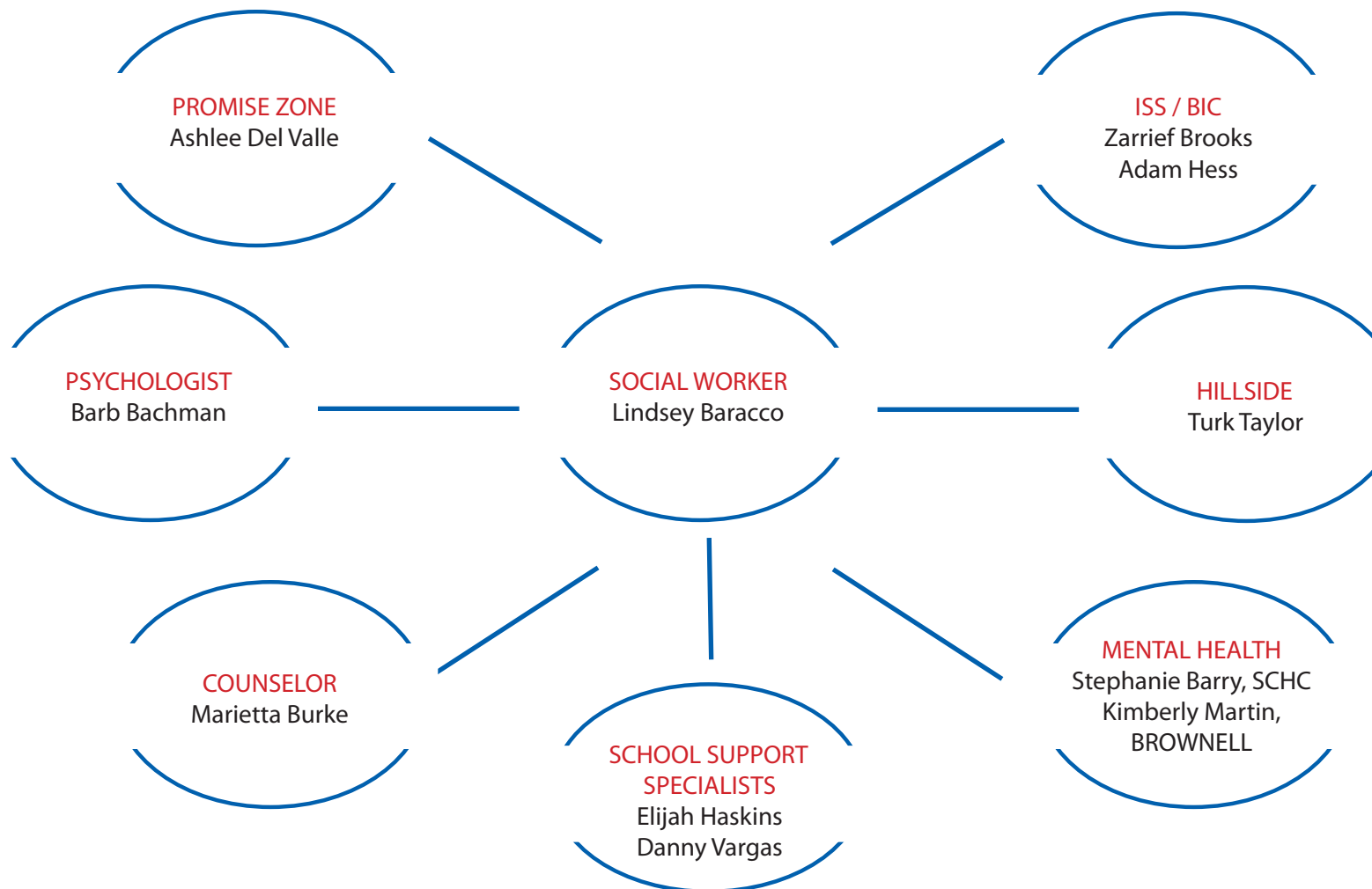
The Hillside Youth Advocates are on-site daily to support students in managing their behavior by setting behavioral expectations, developing individualized behavior plans, providing counseling for students, monitoring student progress through daily reports and working with parents to reinforce behavior expectations at home.

### **Transition Coach**

A student support team member (counselor, social worker, psychologist, student behavior specialist, youth advocate, youth development specialist, case manager, or SPED collaborative teacher) or teacher volunteer who provides coaching, skill instruction and support to specific students who are returning from a short-term or long-term suspension, alternative program, or juvenile facility or incarceration.

# Organization of Student Support Services

## Westside Academy @ Blodgett Middle School



The School Social Workers lead a team of multiple partners committed to meeting the needs of the students through supports and interventions. For information about these services or to discuss your student, please call the School Social Worker at 435-4386.

## **Roles of Support Staff in Buildings**

### **Lead Social Worker**

A designated social worker who coordinates all support staff, both internal and external, and leads the work of ensuring that all students have equitable access to services and interventions that they need. The Lead Social Worker will also facilitate the intervention team in this work.

### **Promise Zone Specialist**

The Promise Zone Specialist assists in identifying youth and delivering interventions to increase school functionality and supports students' school functionality through the use of interventions such as collaborative problem-solving and restorative conferencing.

### **Student Assistance Counselors**

Contact Community Services provides this school-based counseling program based on Project SUCCESS and using mental health professionals to assist youth and their families with counseling, education, consultation and referral services.

### **Mental Health Clinicians**

Presently there are 23 Mental Health Clinic Satellites with a staff of 47 whose mission is to match students' emotional and behavioral needs with effective interventions.

### **DASA Coordinator and DASA Coach**

A school administrator serves as the DASA (Dignity for All Students Act) Coordinator to investigate and process all reported bullying and harassment incidents. The DASA coach is a student support team member who ensures that all DASA prevention activities and DASA student interventions are delivered in a timely manner.

### **Student Support Coach**

A student support team member (counselor, social worker, psychologist, student behavior specialist, youth advocate, youth development specialist, case manager or SPED collaborative teacher) or teacher volunteer who provides coaching, skill instruction and support to specific students who need an on-going intervention and close progress monitoring.

### **School Psychologist**

School psychologists are uniquely qualified members of school teams that support students' ability to learn and teachers' ability to teach. They apply expertise in mental health, learning and behavior to help children and youth succeed academically, socially, behaviorally and emotionally.

### **School Counselor**

The school counselor is responsible for school counselors implement a comprehensive school counseling program that promotes and enhances student achievement. Their work is differentiated by attention to developmental stages of student growth, including the needs, tasks and student interests related to those stages.

### **Behavior Intervention Center Staff**

The staff member assigned to the Behavior Intervention Center is a teaching assistant. In elementary and high schools this staff member supervises the BIC and ISS. This staff member is responsible for making sure the student visit is documented and that the student receives the appropriate support.

### **Huntington Family Support Specialists**

The Support Specialists work to increase student success by improving family functioning and decreasing risk, ensuring students have access to needed supports and services both at school and in the community, and increasing parent involvement in their child's education and student engagement in school. The focus is on helping students and families to identify and remove barriers to student success and school engagement.

### **Hillside Youth Advocate**

The Hillside Youth Advocates are on-site daily to support students in managing their behavior by setting behavioral expectations, developing individualized behavior plans, providing counseling for students, monitoring student progress through daily reports and working with parents to reinforce behavior expectations at home.

### **Transition Coach**

A student support team member (counselor, social worker, psychologist, student behavior specialist, youth advocate, youth development specialist, case manager, or SPED collaborative teacher) or teacher volunteer who provides coaching, skill instruction and support to specific students who are returning from a short-term or long-term suspension, alternative program, or juvenile facility or incarceration.