

**Great
Expectations**

2012 - 2017



1

DISCIPLINARY DATA ANALYSIS

2010-11 and 2011-12

Analysis Outline

2

1. Out-of-school and In-school Suspension Summary

2. Percentage of students suspended out of school

- By grade
- By gender
- By ethnicity
- By school

3. Percentage of students suspended in-school

- By grade
- By gender
- By ethnicity
- By school

Analysis Outline

3

Out of School Suspension

- The Percentage of Students Suspended Out of School = $\frac{\text{Total Number of Students Suspended Out of School}}{\text{BEDs Day Enrollment}}$

In-School Suspension

- The Percentage of Students Suspended In School = $\frac{\text{Total Number of Students Suspended In School}}{\text{BEDs Day Enrollment}}$

Out-of-school and In-school Suspension Summary

4

	2010-11	2011-12
Total number of out-of-school suspensions	9,545	9,988
Total number of students suspended out-of-school	4,167	4,210
Total number of in-school suspensions	13,967	12,135
Total number of students suspended in-school	4,539	4,305

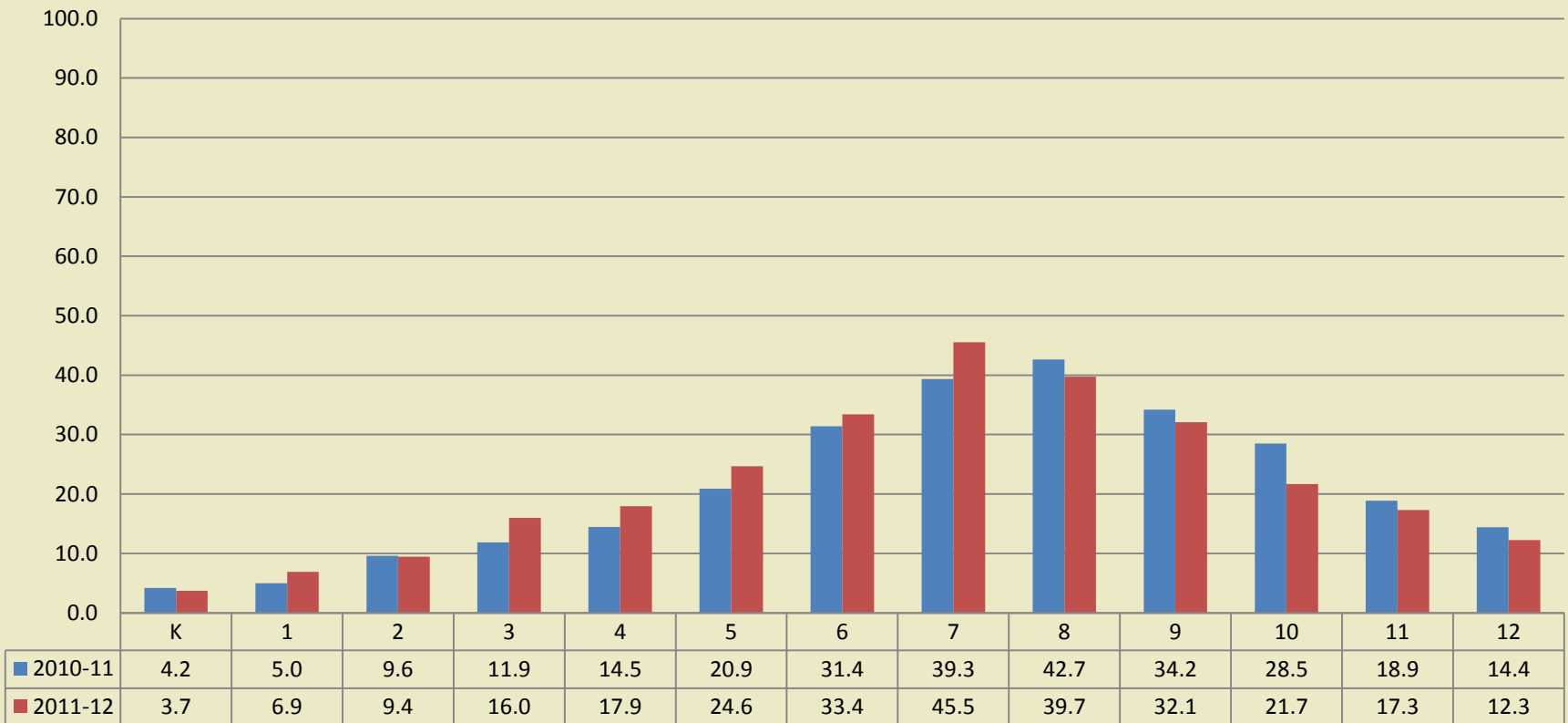
Out of School Suspension(OSS) 2010-11 and 2011-12

5

Over the past two years, changes in the percentage of students suspended out of school varied by grade

6

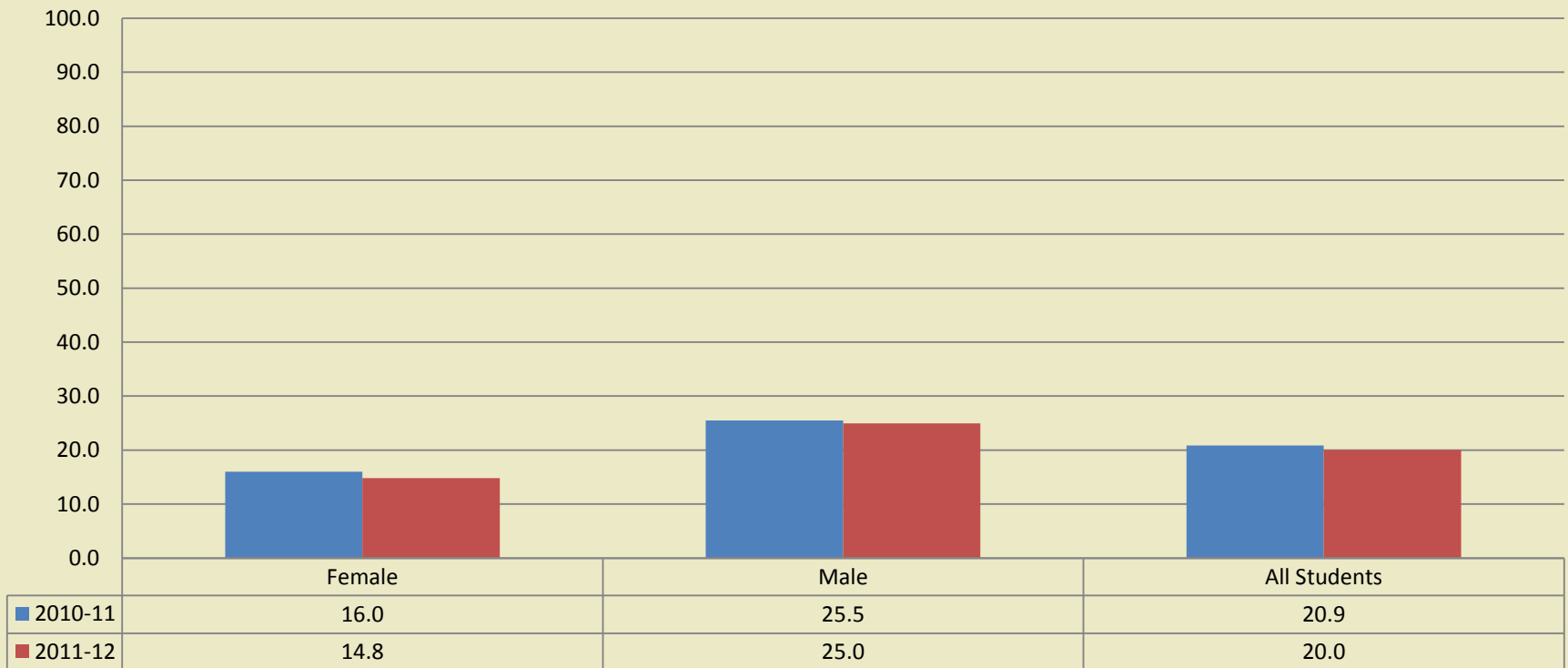
Percentage of Students Suspended Out of School by Grade 2010-11 & 2011-12



Over the past two years, percentage of students suspended out-of-school by gender virtually remained unchanged

7

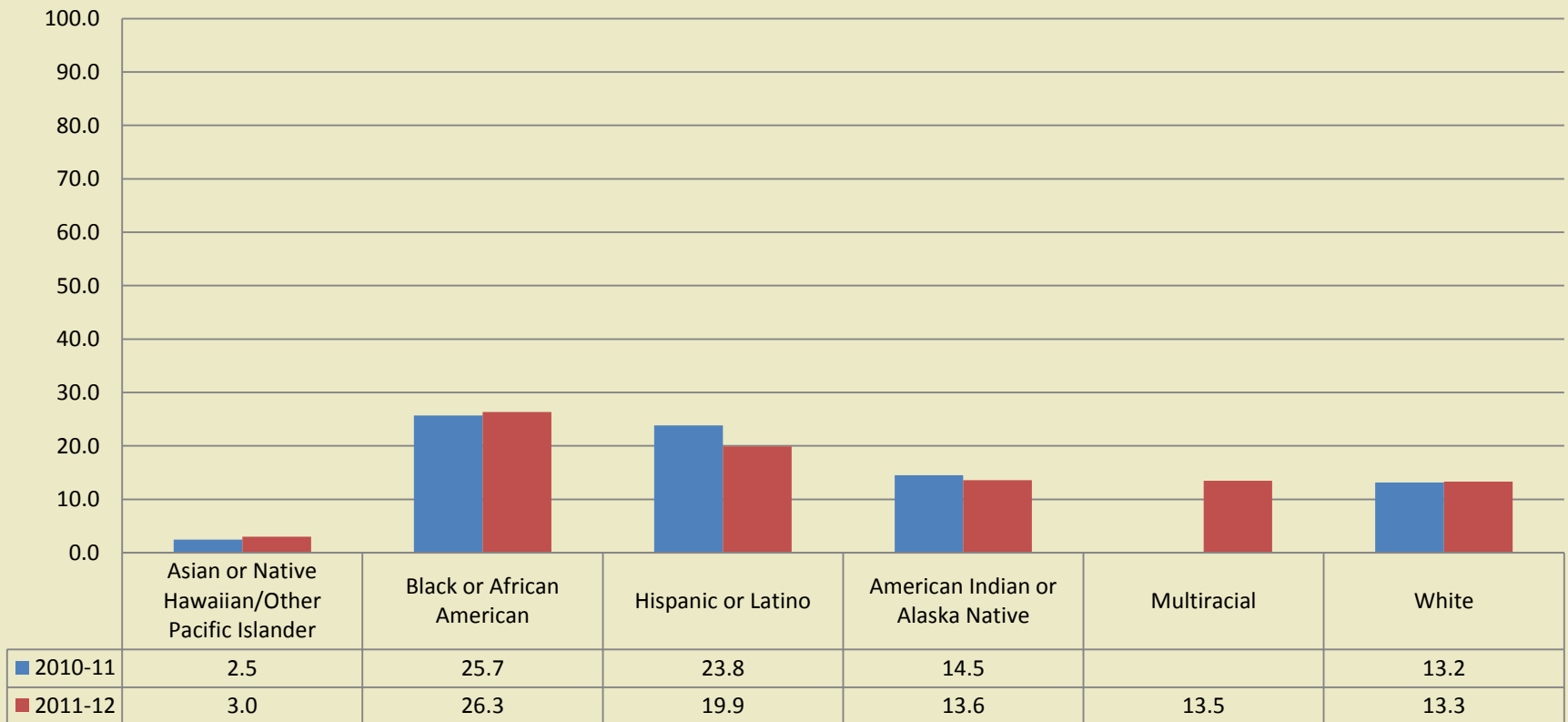
Percentage of Students Suspended Out of School by Gender 2010-11 & 2011-12



Over the past two years, percentage of students suspended remained consistent across all ethnicities

8

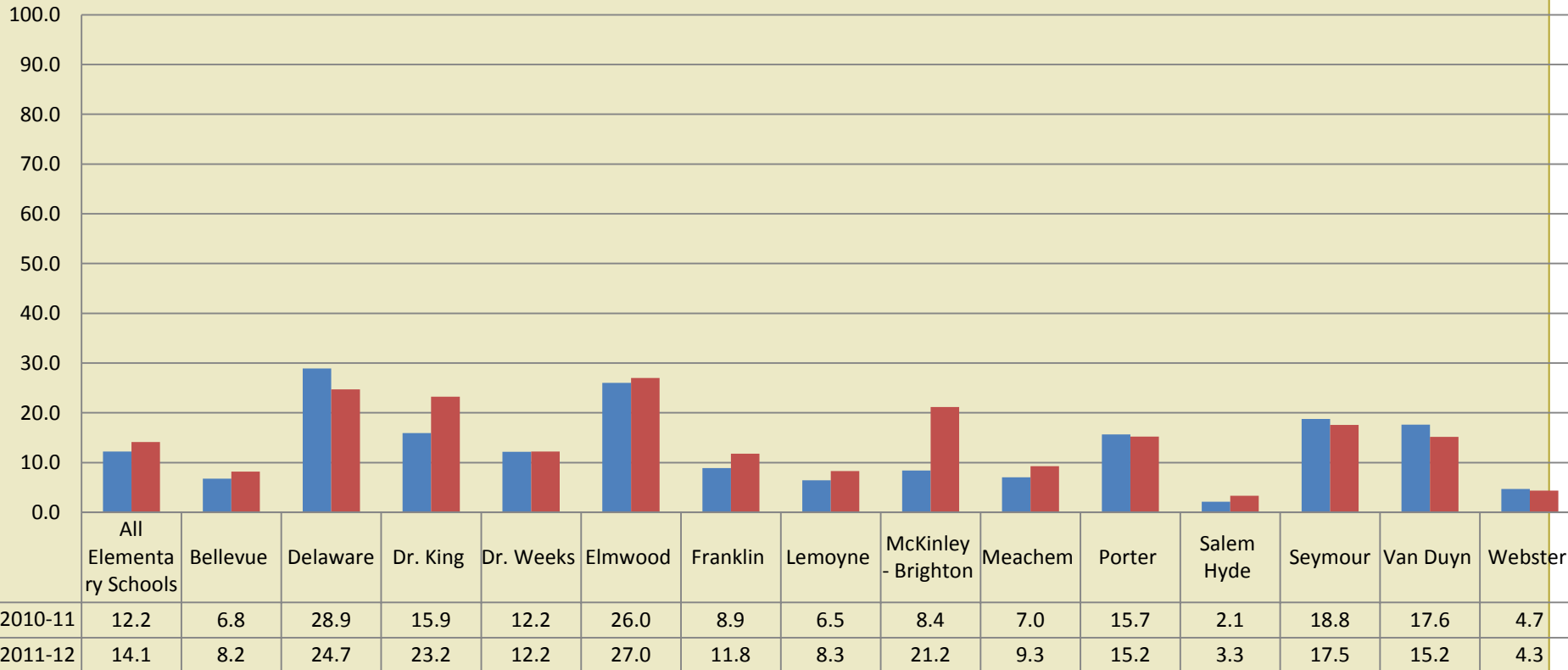
Percentage of Students Suspended Out of School by Ethnicity 2010-11 & 2011-12



Over the past two years, percentage of students suspended out-of-school varied by school at elementary school level

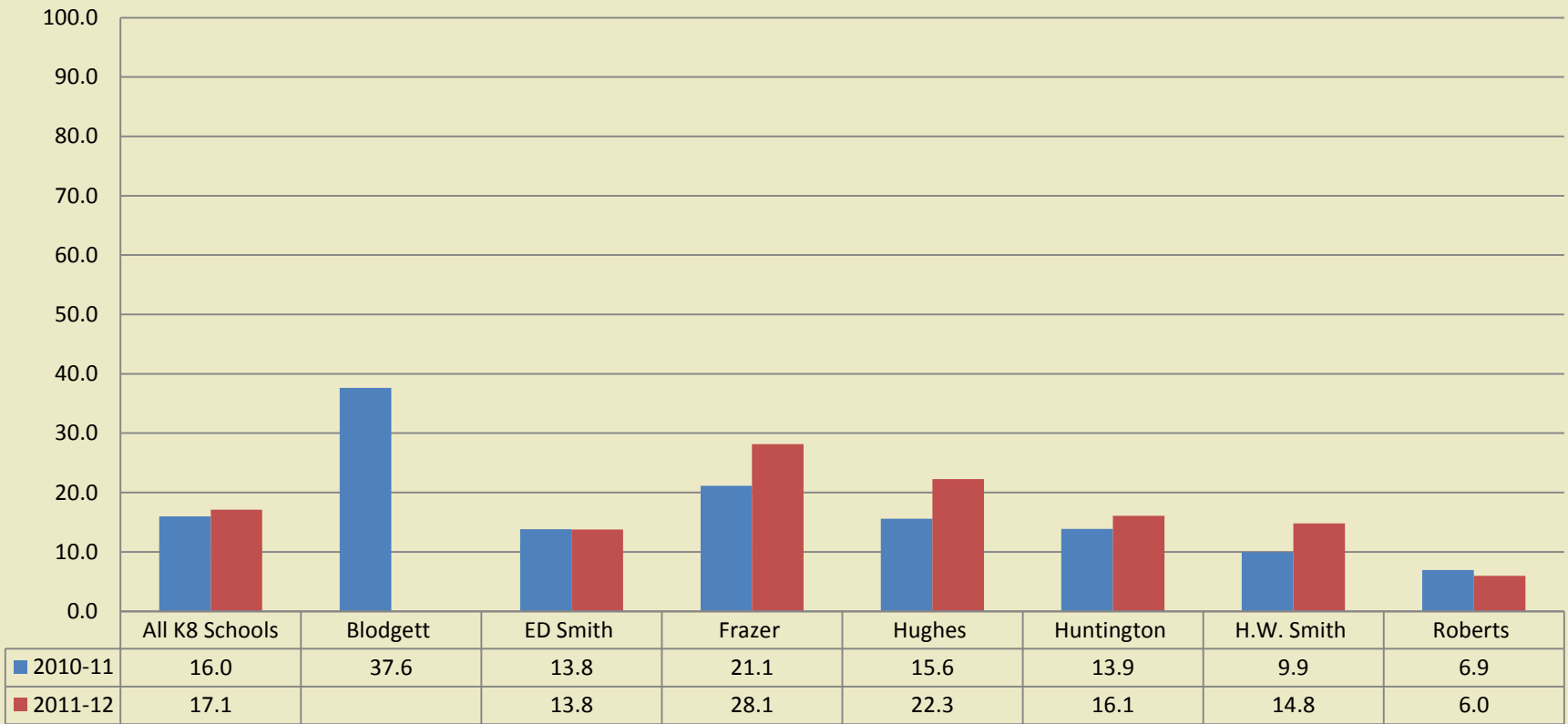
9

Percentage of Students Suspended Out of School-Elementary Schools 2010-11 & 2011-12



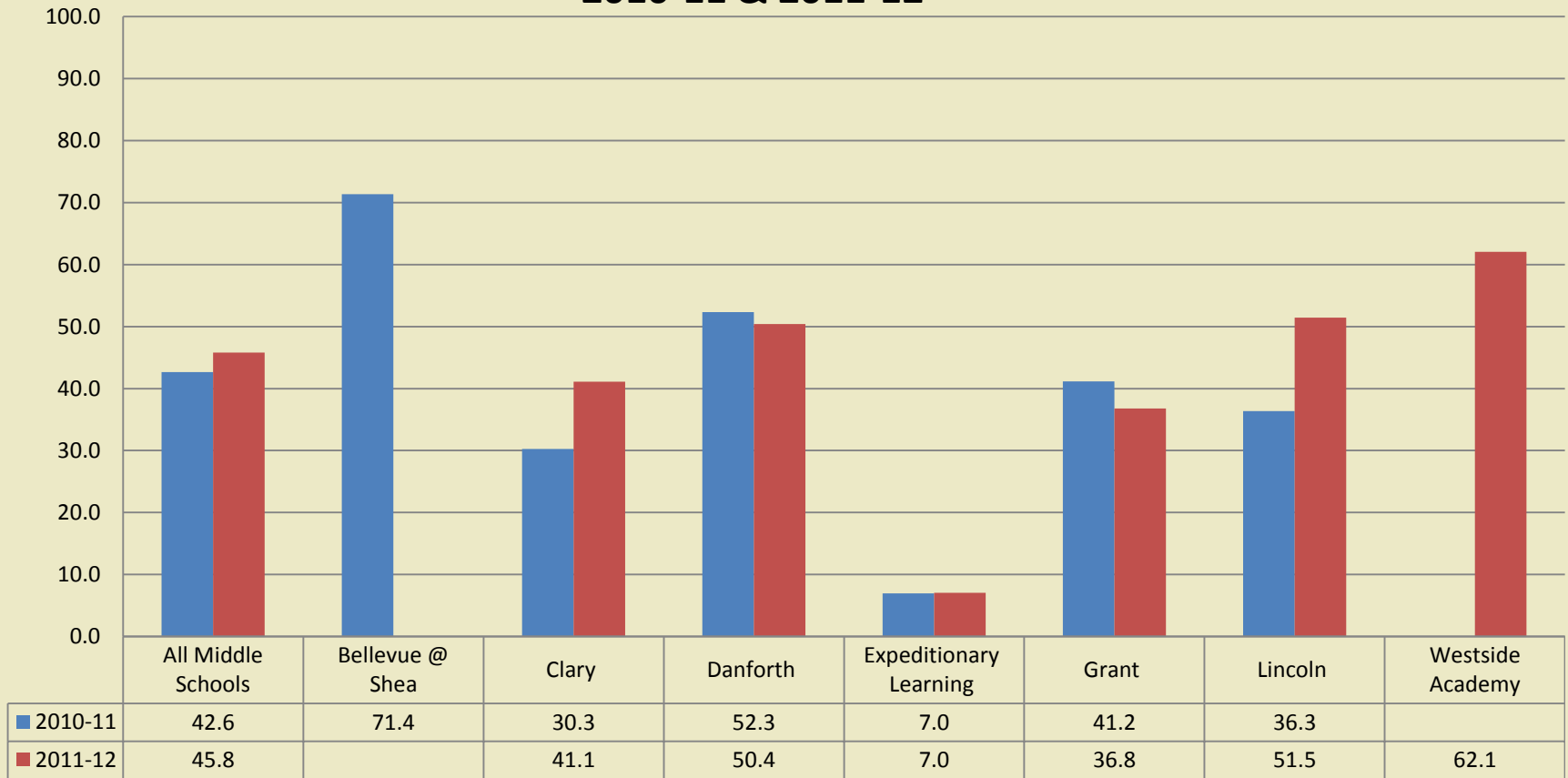
Over the past two years, the majority of K-8 schools saw an increase in percentage of students suspended out-of-school

Percentage of Students Suspended Out of School-K-8 Schools 2010-11 & 2011-12



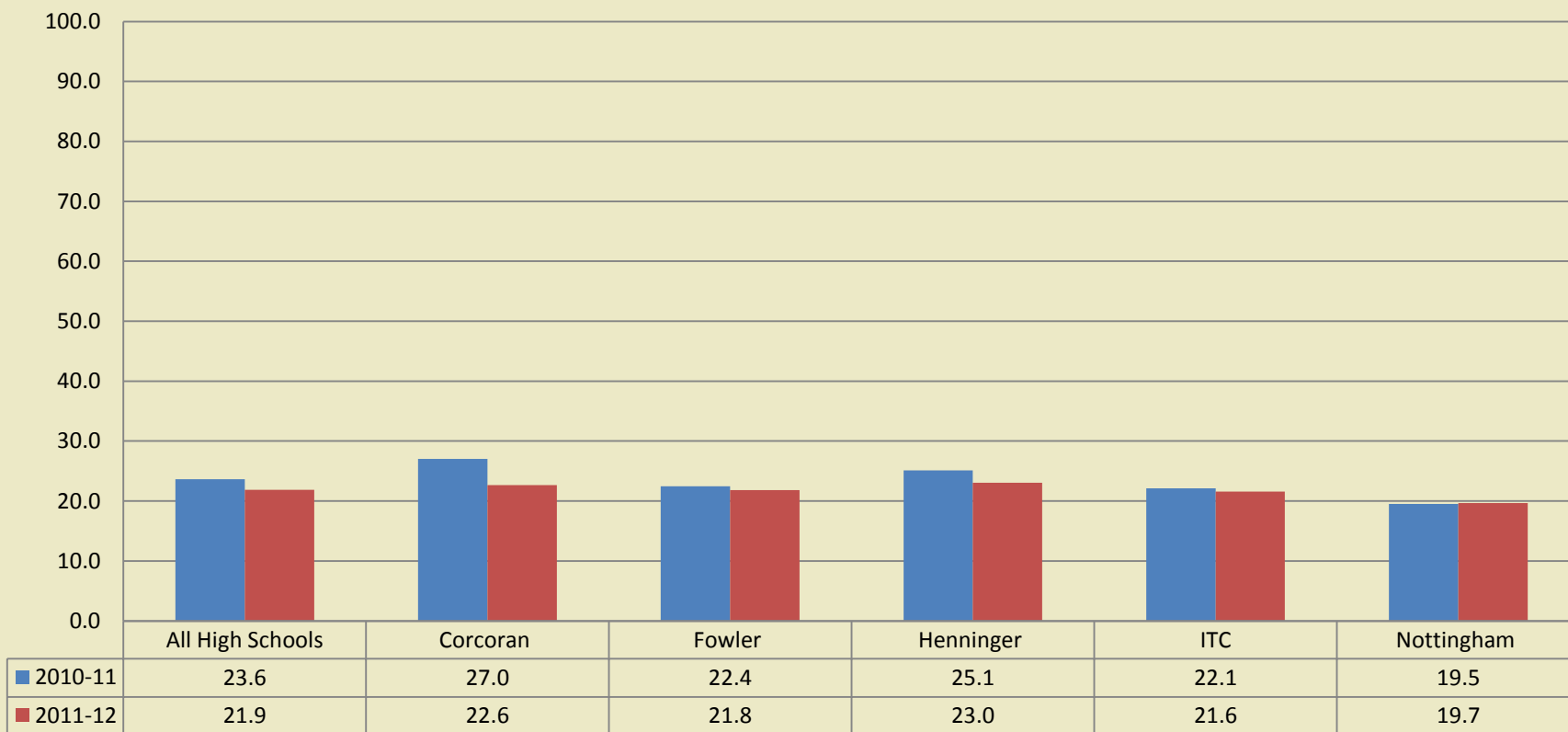
Over the past two years, percentage of students suspended out-of-school varied by school at the middle school level

Percentage of Students Suspended Out of School-Middle Schools 2010-11 & 2011-12



Percentage of students suspended out-of-school decreased slightly in most high schools in 2011-12 compared to 2010-11

Percentage of Students Suspended Out of School-High Schools 2010-11 & 2011-12



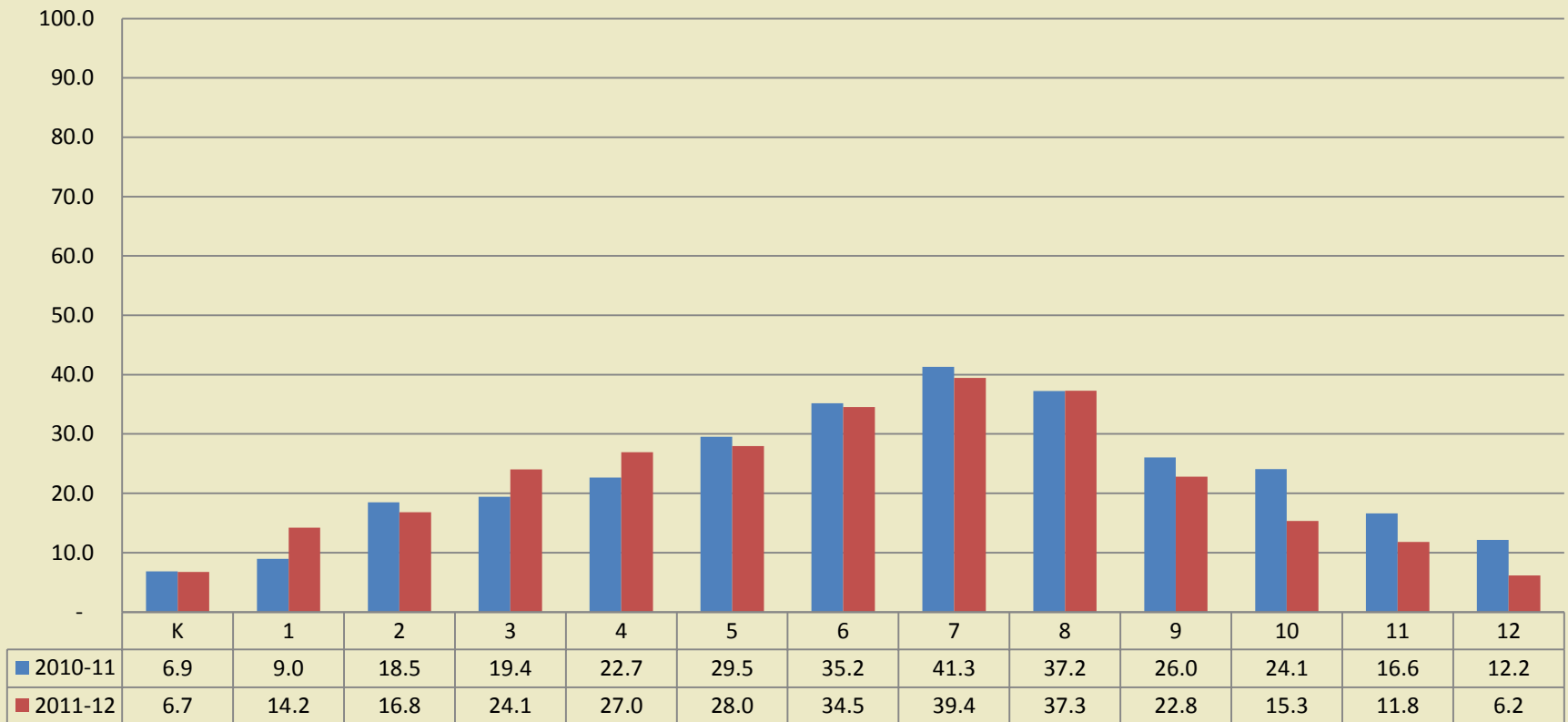
In-School Suspension (ISS) 2010-11 and 2011-12

13

Over the past two years, changes in the percentage of students suspended in-school varied by grade

14

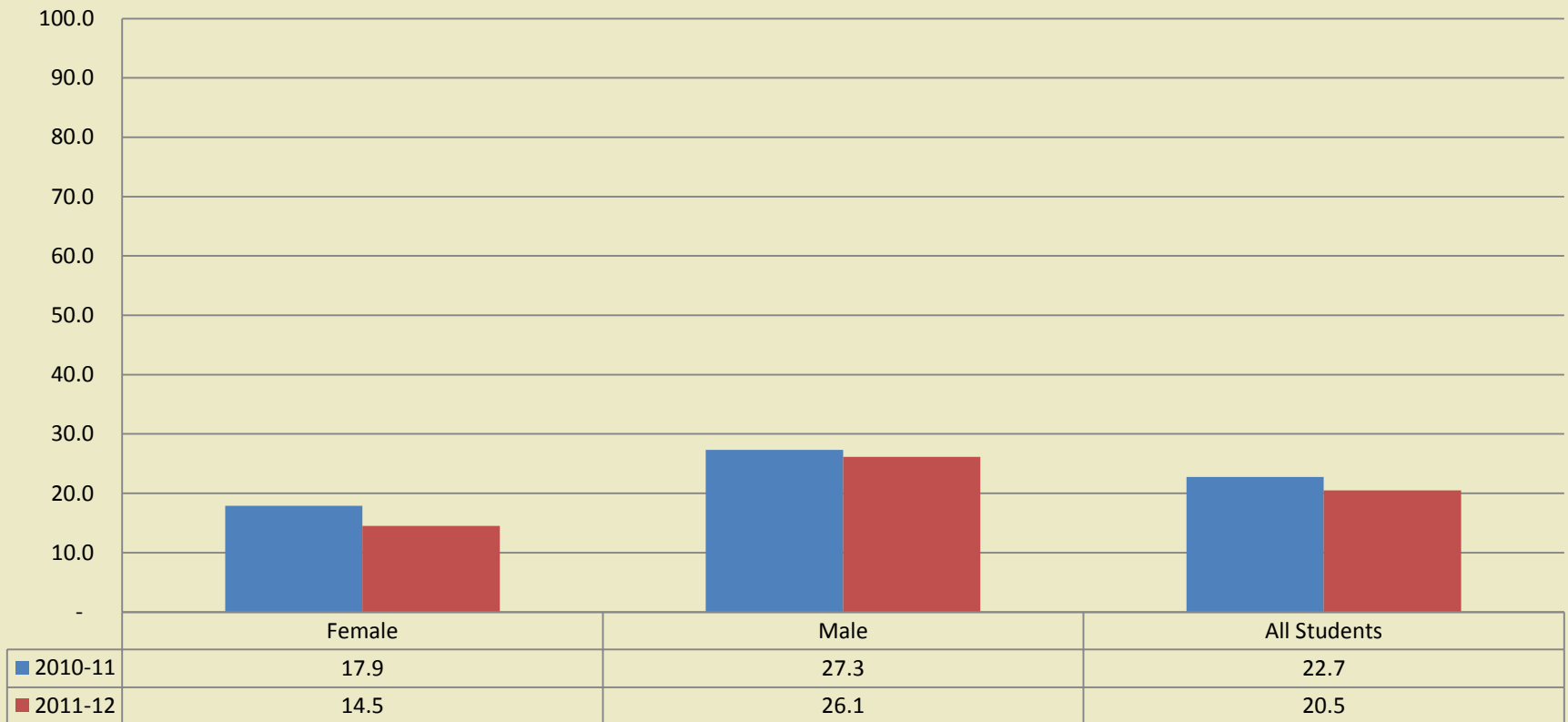
Percentage of Students Suspended In School by Grade 2010-11 & 2011-12



Over the past two years, the percentage of students suspended in-school showed minimal decreases by gender

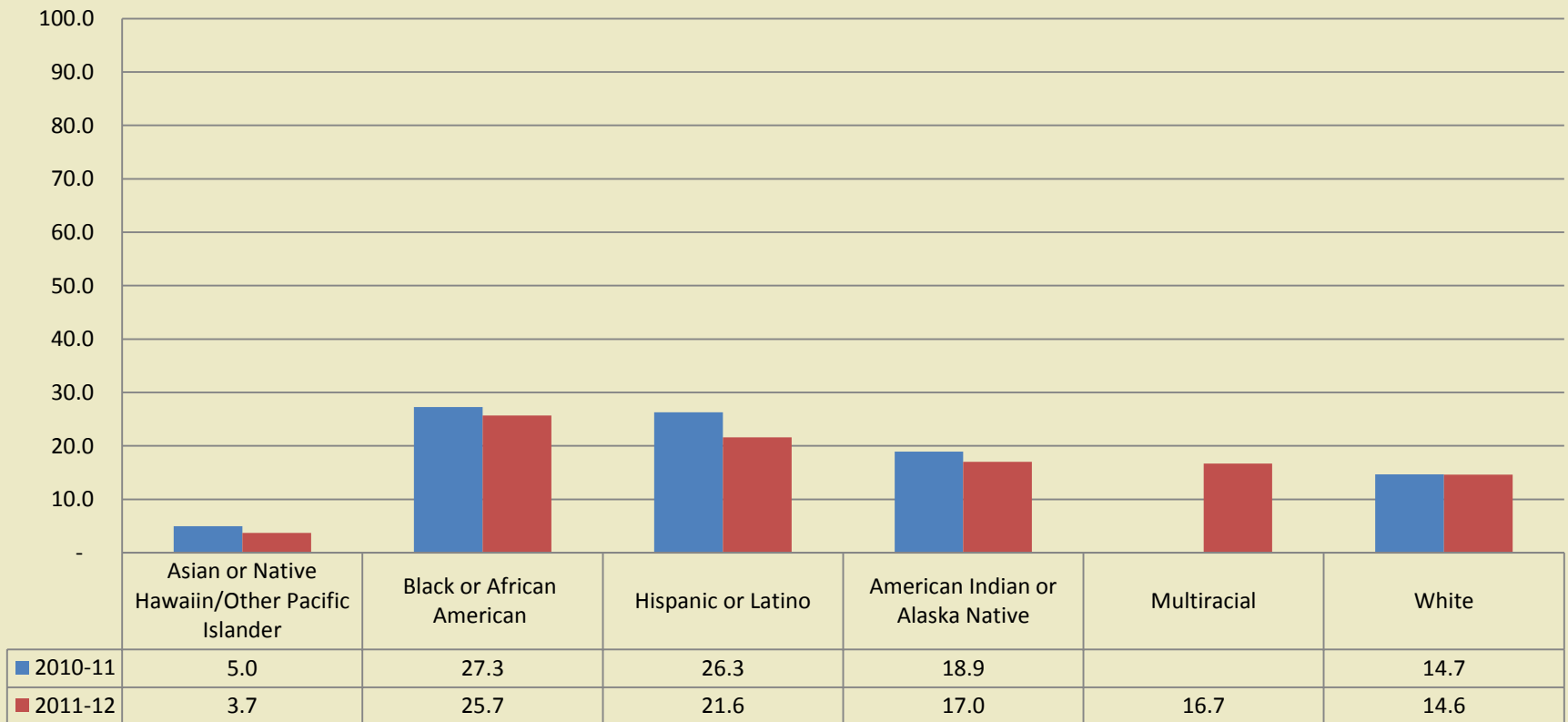
15

Percentage of Students Suspended In School by Gender 2010-11 & 2011-12



For each ethnicity group, percentage of students suspended in-school stayed relatively consistent from 2010-11 to 2011-12

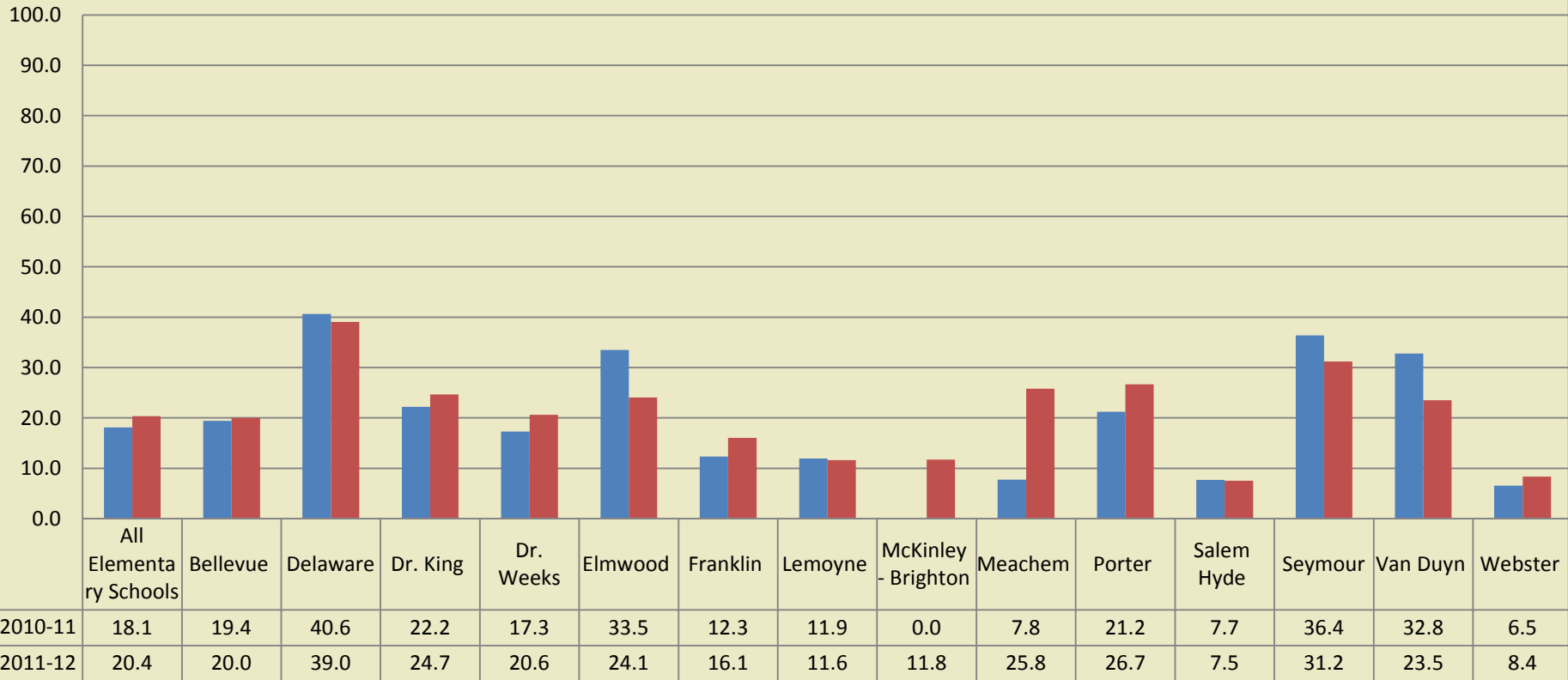
**Percentage of Students Suspended In School by Ethnicity
2010-11 & 2011-12**



Over the past two years, percentage of students suspended in-school varied by school at the elementary school level

17

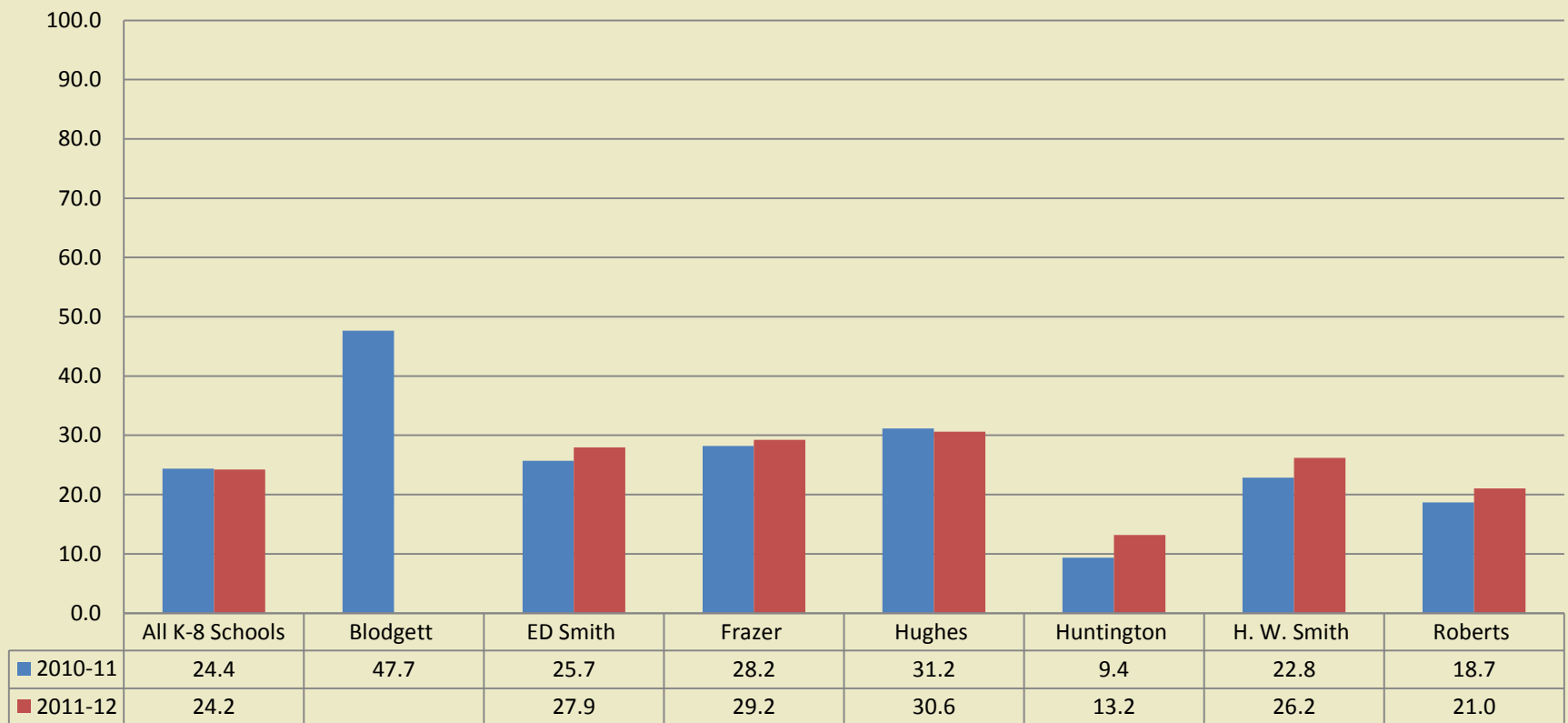
Percentage of Students Suspended In School-Elementary Schools 2010-11 & 2011-12



At the K-8 school level, the percentage of students suspended in-school stayed relatively consistent from 2010-11 to 2011-12

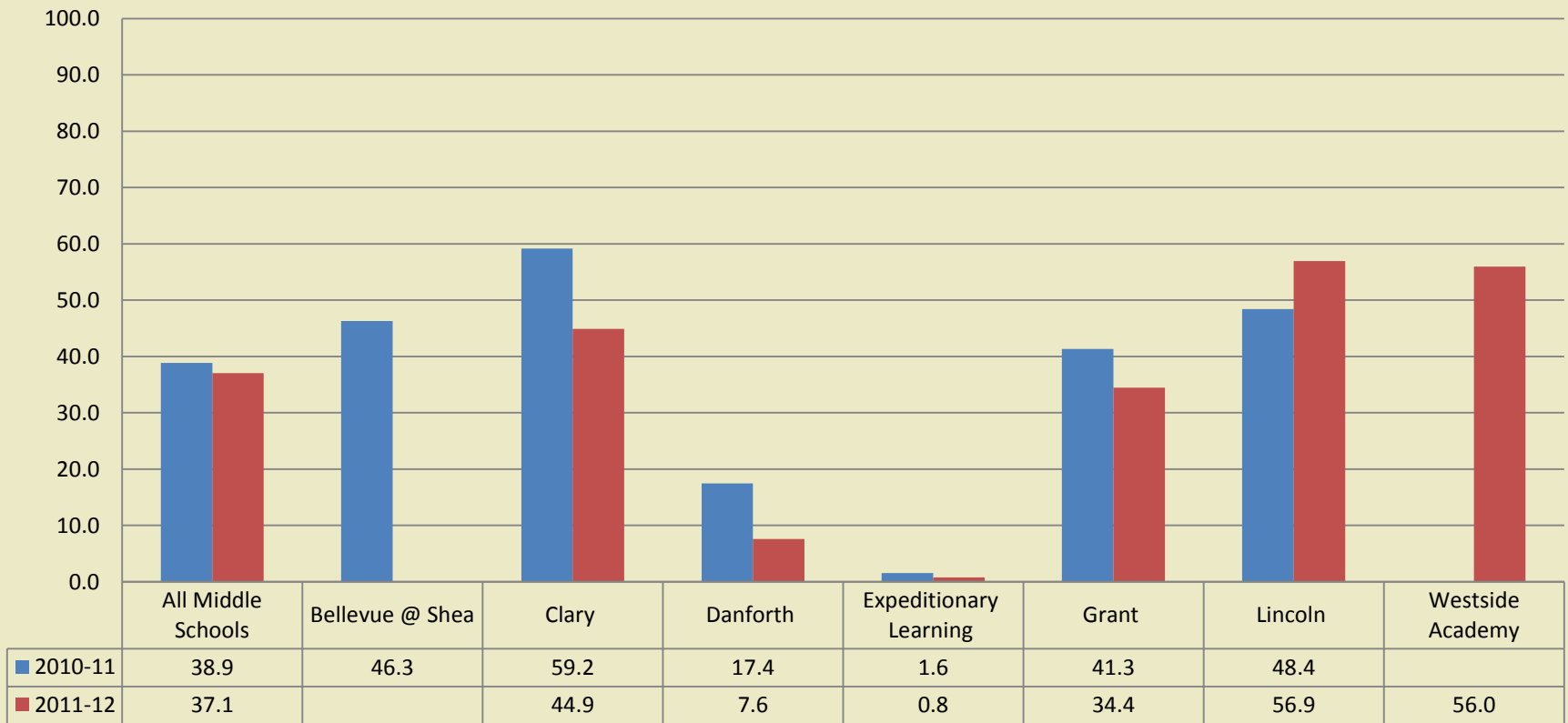
18

Percentage of Students Suspended In School-K-8 Schools 2010-11 & 2011-12



The majority of middle schools saw decreases in percentage of students suspended in-school from 2010-11 to 2011-12

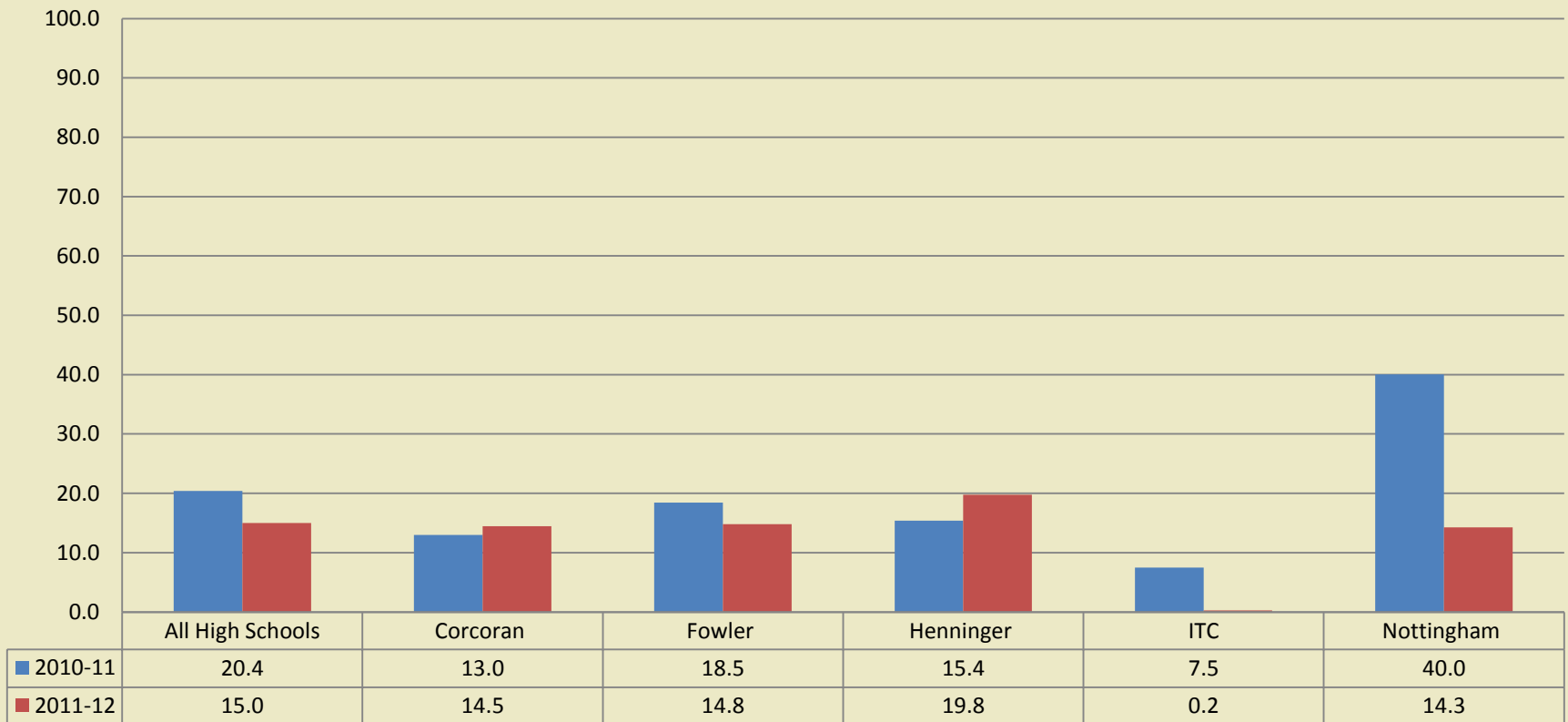
Percentage of Students Suspended In School-Middle Schools 2010-11 & 2011-12



Over the past two years, percentage of students suspended in-school varied by school at high school

20

Percentage of Students Suspended In School-High Schools 2010-11 & 2011-12



**Great
Expectations**

2012-2017



21

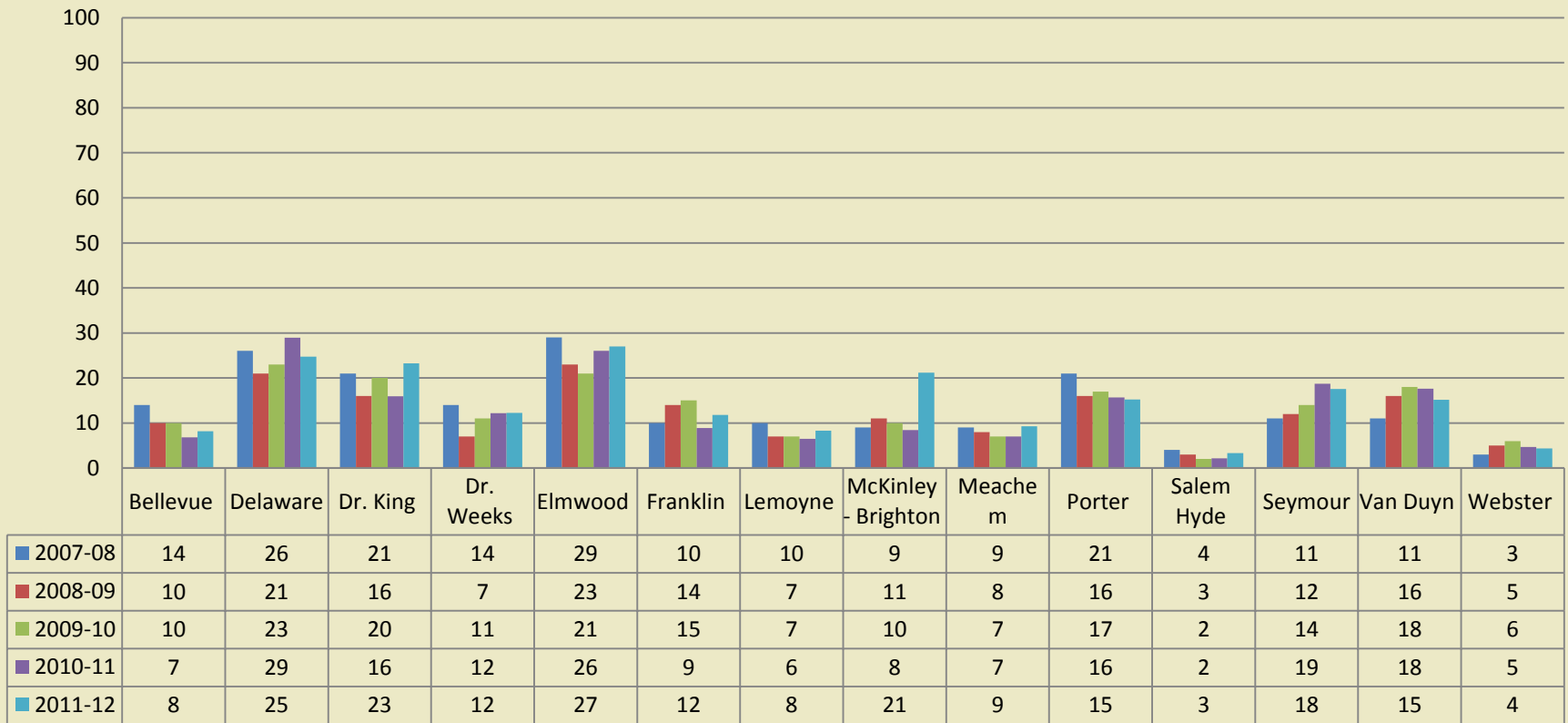
DISCIPLINARY DATA ANALYSIS

2007-2012

BY SCHOOL

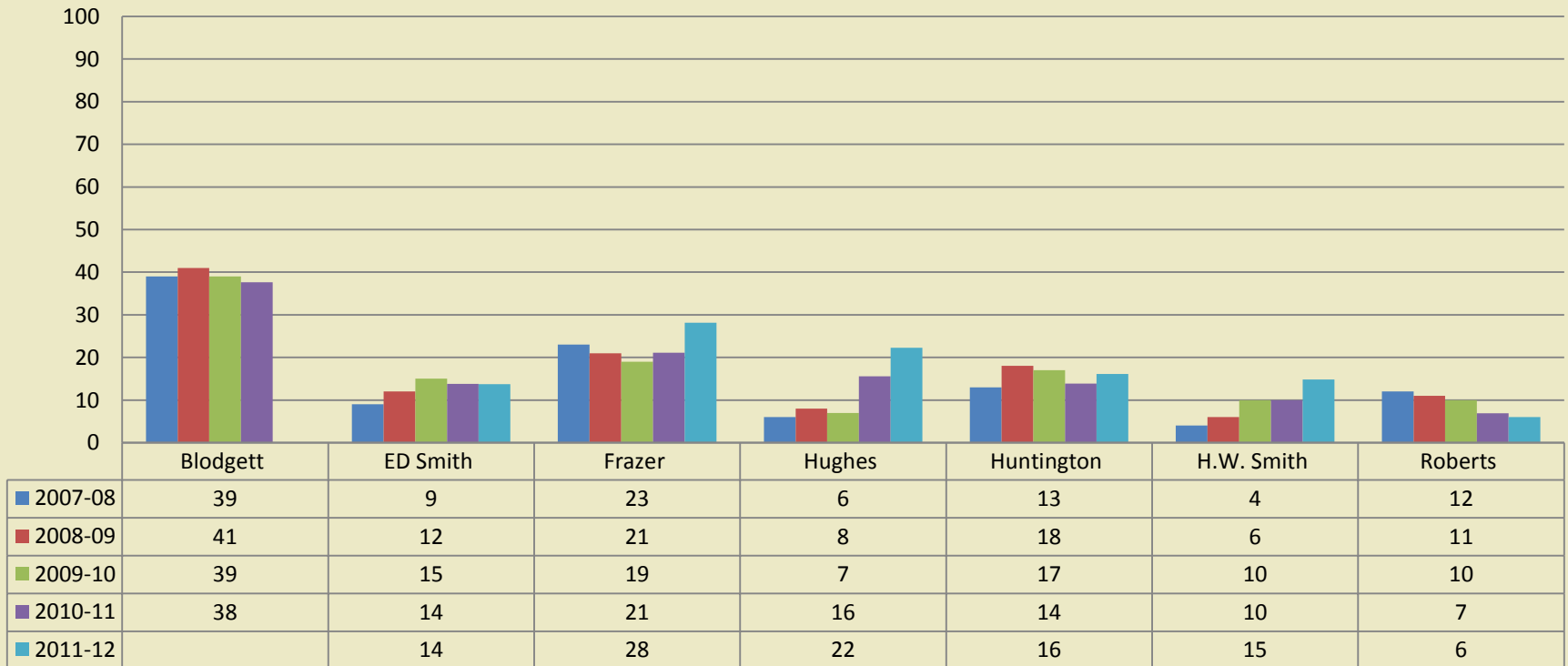
At the elementary level, the percent of students suspended varies slightly by school over a 5 year period.

Percentage of Students Suspended Out of School-Elementary Schools 2007-2012



The trend of the percent of students suspended by K-8 school is specific to each school.

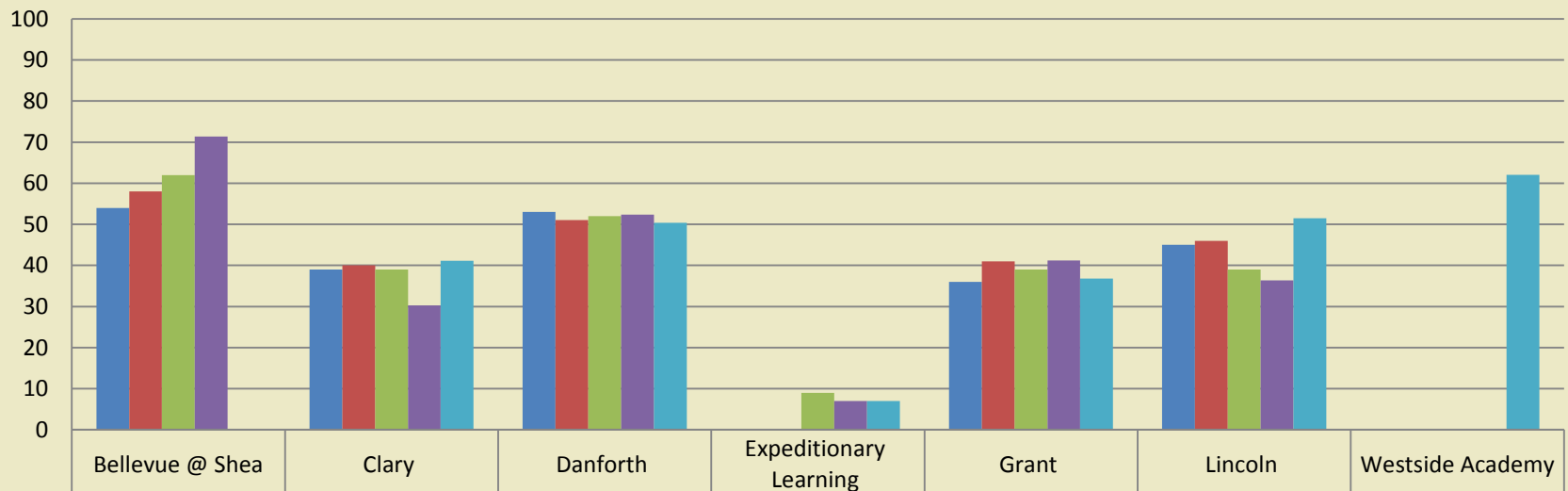
Percentage of Students Suspended Out of School- K-8 Schools 2007-2012



Most middle schools suspend 30% or more of their students each year over 5 consecutive years.

24

**Percentage of Students Suspended Out of School-
Middle Schools
2007-2012**



■ 2007-08	54	39	53		36	45	
■ 2008-09	58	40	51		41	46	
■ 2009-10	62	39	52	9	39	39	
■ 2010-11	71	30	52	7	41	36	
■ 2011-12		41	50	7	37	51	62

The percentage of students suspended at the high school level has been relatively stable over the past 5 years for most high schools.

25

Percentage of Students Suspended Out of School- High Schools 2007-2012

