



# Citizens of Syracuse, New York

## Board of Education

### Superintendent of Schools *Jaime Alicea*

**Chief of Staff**  
*Monique Wright-Williams*

**Administrator for Communications**  
*Michael Henesey*

**Office of Family Engagement**

**District Clerk**  
*Eileen Steinhardt*

**Internal Auditor**  
*Consultant Firm*

**School Claims Auditor**  
*Consultant Firm*

**Deputy Claims Auditor**  
*Jessica Madonna*

**Executive Assistant**  
*Theresa Piraino*

**Administrative Assistant**  
*Jessica Bryan*

**Typist II**  
*Kathryn Rush*

**Chief Academic Officer**  
*TBA*

**Chief Accountability Officer**  
*Timothy Moon*

**Chief Financial Officer**  
*Suzanne Slack*

**Chief Human Resources Officer**  
*Christopher Miller, Ed.D.*

**Chief Operations Officer**  
*Dean DeSantis*

**Chief Ombuds/Student Support Services Officer**  
*Patricia Clark*

**Assistant Superintendent for Early Childhood/PK-8 and Elementary**  
*Margaret Wilson*

**Executive Director**  
*Dr. Rob DiFlorio*

**Principals**

**Assistant Superintendent for Secondary Education**  
*Anthony Davis*

**Executive Director**  
*Pam Odom*

**Principals**

**MSAP**

**Johnson Voc. Center**

**Director of Career and Technical Education**  
*Robert Leslie*

**Director of Special Programs**  
*Michael Puntschenko*

**Assistant Superintendent for Teaching and Learning**  
*Nathan Franz*

**Director of Professional Development**  
*TBA*

**Director of ENL, World Language Program and Bilingual Education**  
*Jacqueline LeRoy*

**Director of School Reform**  
*Dr. Laura Kelley*

**Director of Student Registration**  
*Akua Goodrich*

**Director of Infrastructure Services**  
*Andrew Cramer*

**Supervisor of Testing**  
*Margaret Bailey*

**Coordinator of Data Management**  
*Raymond Stazzone*

**Comptroller**  
*Julie Eurenus*

**Director of Accounting Services**  
*Vacant*

**Director of Budget**  
*Mary Habib*

**Executive Director of Employee Services**  
*Lisa Wade*

**Director of Recruitment and Selection**  
*Scott Persampieri*

**Director of Staff Relations**  
*Joshua Beardall, Ed.D.*

**Medical Director**  
*Dr. Theodore Triana (Consultant)*

**Coordinators of Educator Effectiveness**

**Director of Facilities III**  
*Thomas Ferrara, P.E.*

**Director of Food Service**  
*Rachel Murphy*

**Director of School Security**  
*Thomas Ristoff*

**Director of SIRP Officers**  
*Sgt. Dennis Regin*

**Director of Transportation**  
*Theresa Kuss*

**Director of Student Support Services**  
*Melissa Evans*

**Director of School Culture and Climate**  
*Nicole Leigh Haynes*

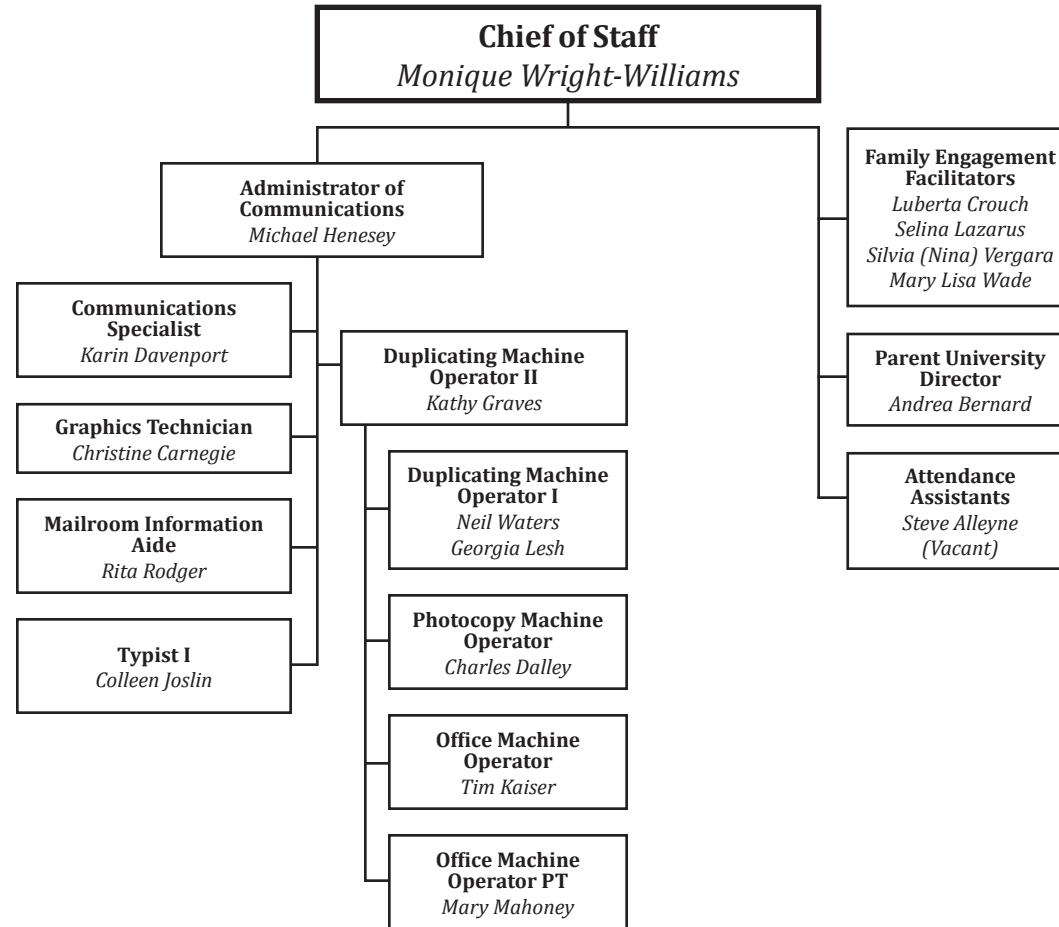
**Director of Special Education**  
*Amy Evans*

**McCarthy at Beard**

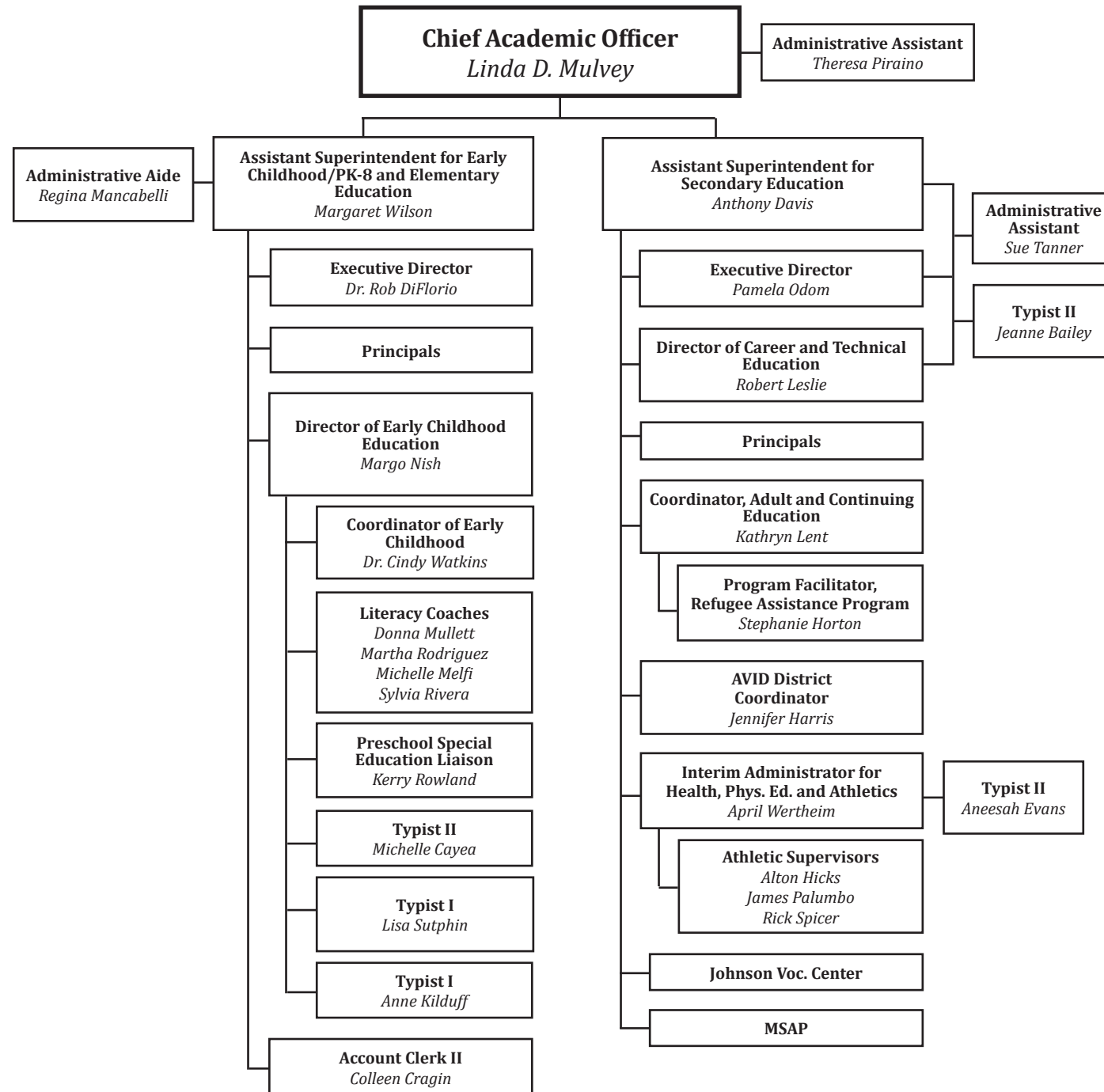
**Elmcrest**

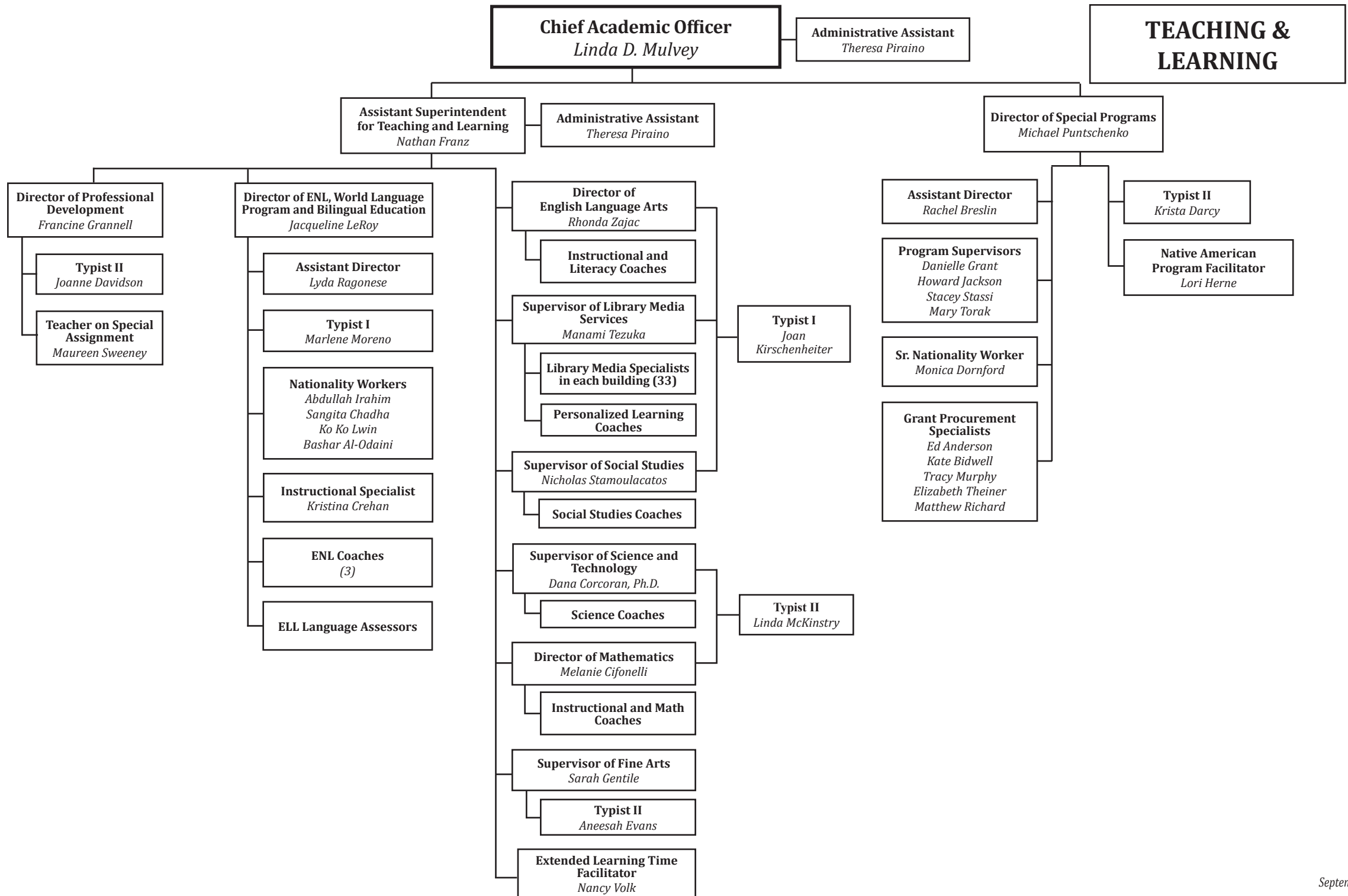


**CHIEF OF STAFF**



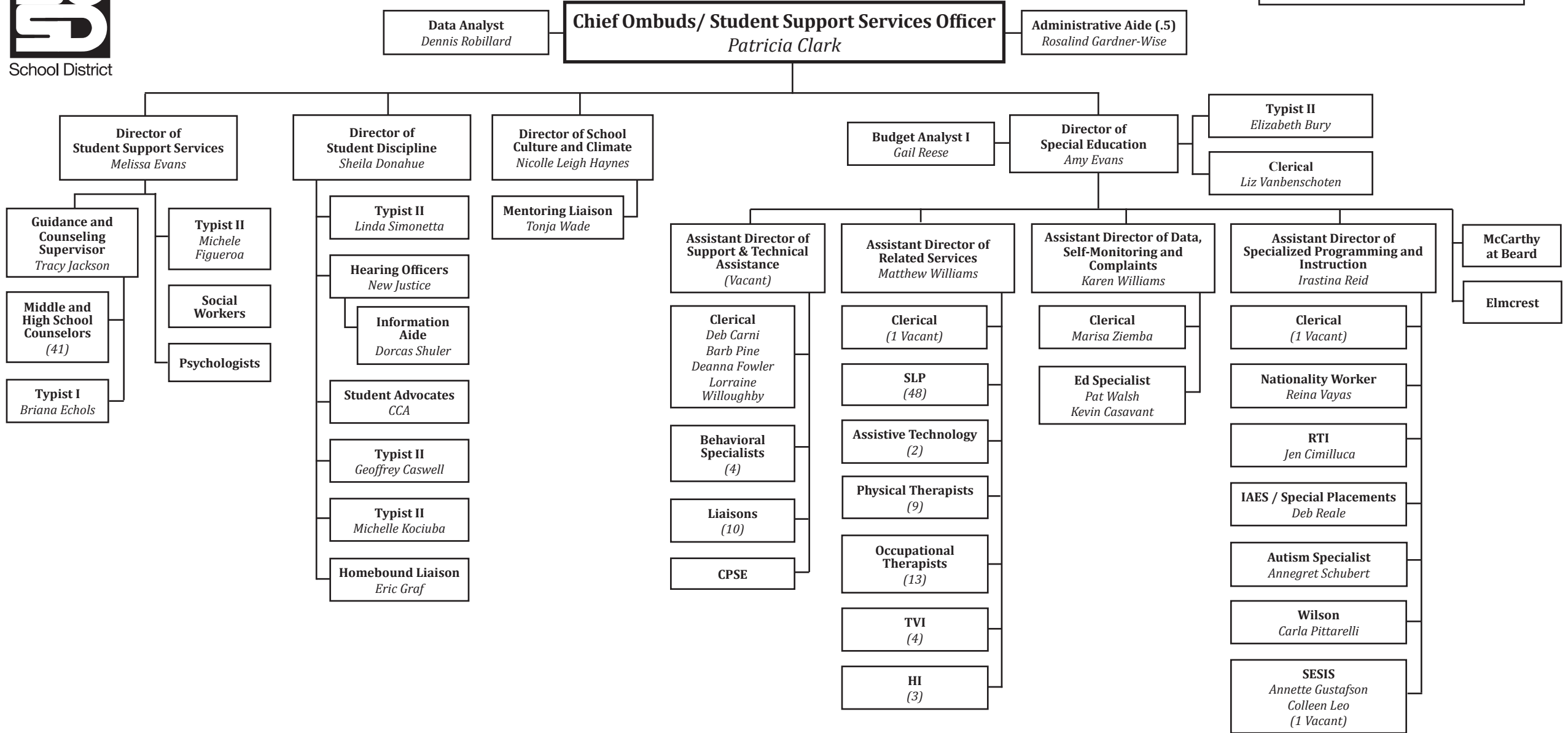
**TEACHING &  
 LEARNING**





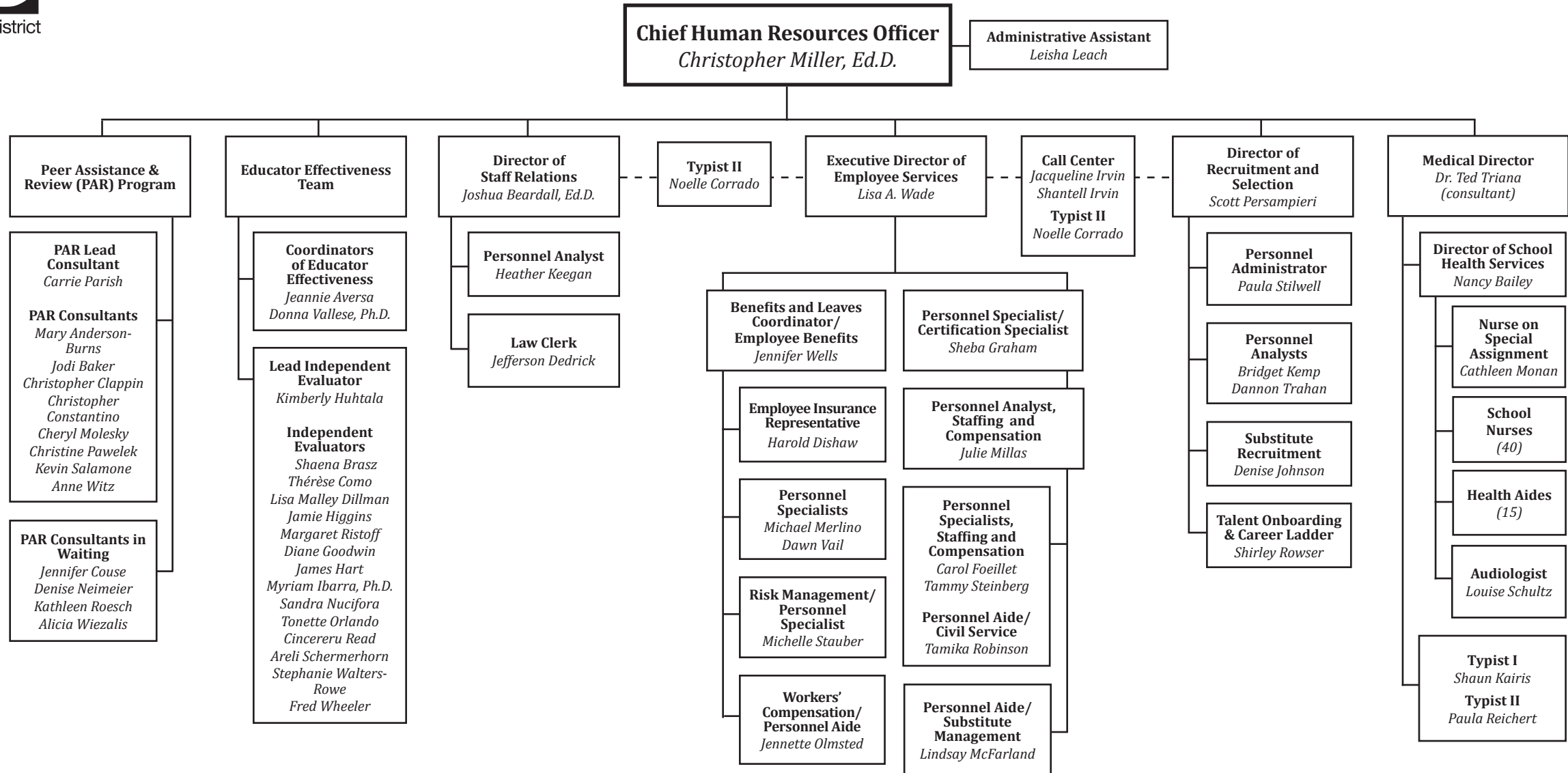


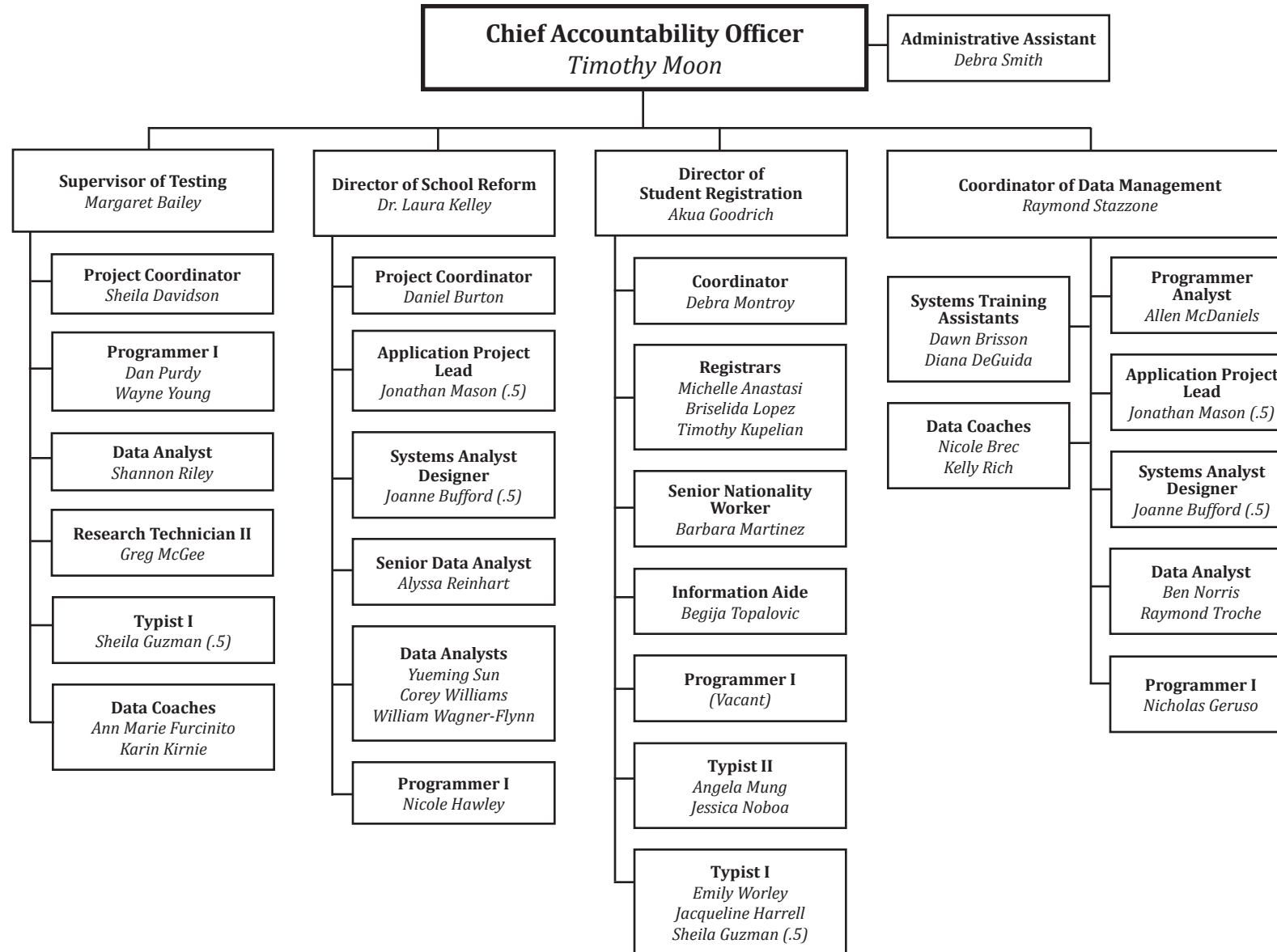
# STUDENT SUPPORT SERVICES





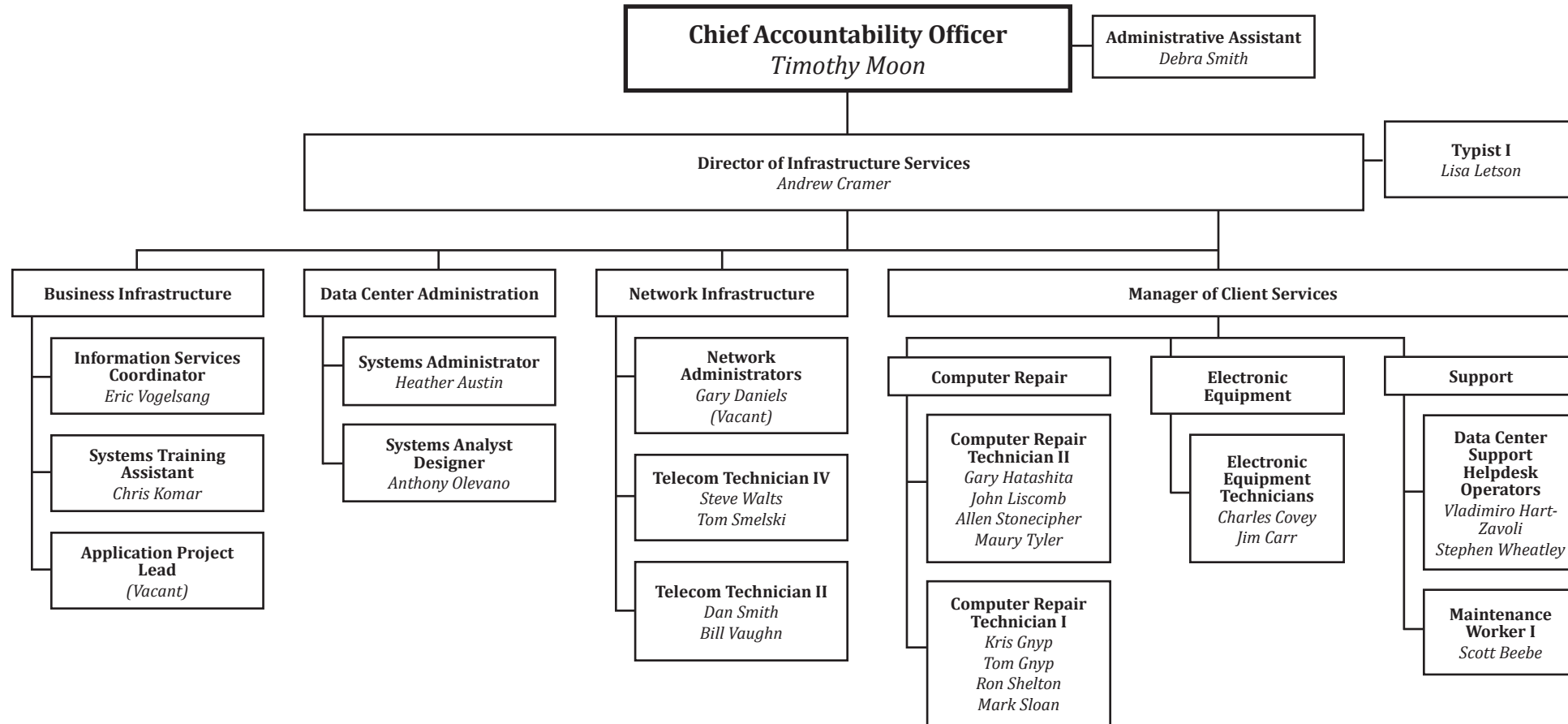
# HUMAN RESOURCES







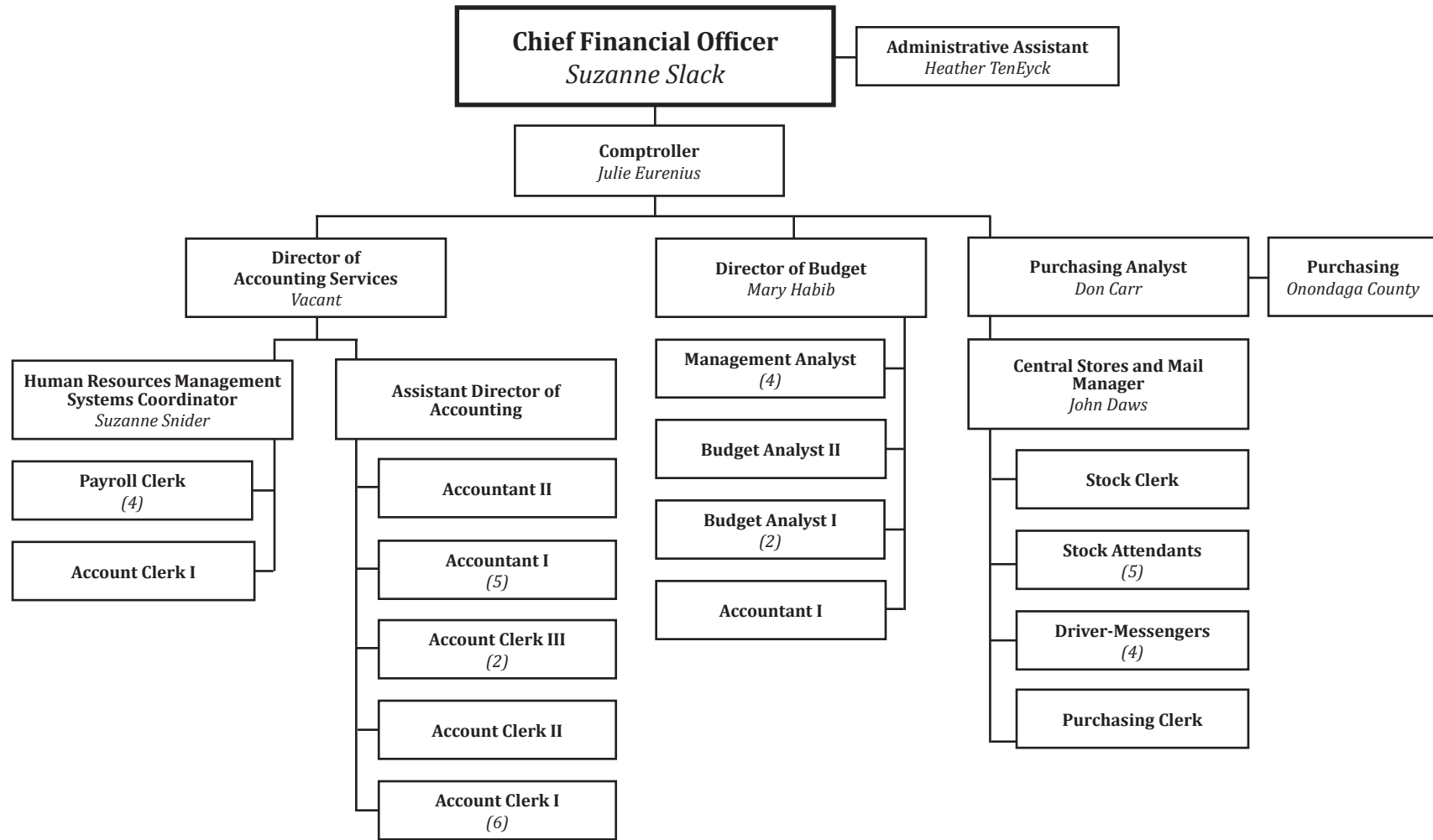
**SHARED  
ACCOUNTABILITY**







**FINANCE**





**OPERATIONS**

**Chief Operations Officer**  
*Dean DeSantis*

